

EVO ELECTRIC FRYER 1 TANK 22lt

CODICE
CR1209829

MODELLO
D9222/10FREEV

SERIE
DIAMANTE 90



GENERAL CHARACTERISTICS

In addition to offering the maximum choice of solutions and 2 mm thick and 90 cm deep tops, this series has all the power, robustness and functionality you need to work efficiently. External coatings and feet in stainless steel with Scotch Brite finish. Working table height adjustable from 840 to 900 mm. Range modularity: 200-400-600-800-1200 Wide range of accessories.

EVO ELECTRIC FRYER 1 TANK 22lt

CODICE
CR1209829

MODELLO
D9222/10FREEV

SERIE
DIAMANTE 90

TECHNICAL SPECIFICATIONS

■ Electronically controlled fryer with high productivity. ■ Top made of 20/10 thick AISI304 stainless steel. ■ AISI 18/10 stainless steel moulded tubs with radial internal profile. ■ Equipped with a large front reservoir for oil and foam expansion. ■ Large cold zone for collecting cooking residues ensures the integrity of the oil used for longer. ■ Safety thermostat (230°C) against excessive oil temperatures. ■ Heating with power modulation (variable power delivery according to temperature and timing). ■ This special technology makes it possible to increase efficiency and optimise consumption at the same time. ■ Control panel with high-resolution 7" touch screen display (TPC) with electronic control board for managing the cooking temperature from 0 to 185°C with $\pm 1^\circ\text{C}$ accuracy of the frying programmes, HACCP alarms, tank cleaning cycle, preheating and holding function at 100 °C. ■ Up to 30 frying programmes can be managed: adjustment of times, temperatures, holding times, representative images. ■ Easy recall of recipes via image menus. ■ Recipes can be uploaded via USB key to make parameters shareable across multiple fryers, making it easy to

achieve a standard of frying even in different environments. ■ A special software recognises frying programmes that by their characteristics can be made ■ Oil utilisation control software (OLC) ■ Safety thermostat (230°C) against excessive oil temperatures. ■ Heating by stainless steel burners with optimised flame, positioned outside the tank. ■ Automatic ignition of main burners via electronic flame controller, without pilot burner.

■ In the electric version, the heating element can be rotated by more than 90°. ■ Moulded inner basin for easy cleaning. ■ Control panel with high-resolution 7" touch screen display, simple and intuitive. ■ Equipment certified for low voltage directive 2014/35/EU according to the international CB scheme. ■ Thanks to the jet-proofing certification (IPX5) obtained through specific tests, knobs and under-knobs can be washed, without compromising functionality and safety.

EVO ELECTRIC FRYER 1 TANK 22lt

CODICE
CR1209829

MODELLO
D9222/10FREEV

SERIE
DIAMANTE 90

Technical Information

| SPECIFICATION | DATA |
|-----------------------|---------------------------------------|
| MATERIAL | CR1209829 |
| DEFINITION | D9222/10FREEV FRIGGITRICE ELE 900 M40 |
| COMMERCIAL LINE | DIAMANTE |
| SUPPLY | ELECTRICS |
| DIM. WIDTH | 400 mm |
| DIM. PRODUCTIVITY | 900 mm |
| DIM. HEIGHT | 870 mm |
| NET WEIGHT | 0 Kg |
| VOLUME (net) | 0,313 |
| PACKAGE LENGTH | 840 mm |
| PACKAGE WIDTH | 1020 mm |
| PACKAGING HEIGHT | 1040 mm |
| PACKAGE VOLUME | 0,891 m3 |
| GROSS PACKING WEIGHT | 0 Kg |
| STANDARD POWER SUPPLY | 380-415V 3N |
| FREQUENCY | 50-60 Hz |
| ELECTRICAL POWER | 22,000 kW |
| IP GRADE | IPX5 |
| CERTIFIED MODEL | D9222/10FREEV |
| Capacity | 22 litri |

EVO ELECTRIC FRYER 1 TANK 22lt



weinnovate cooking

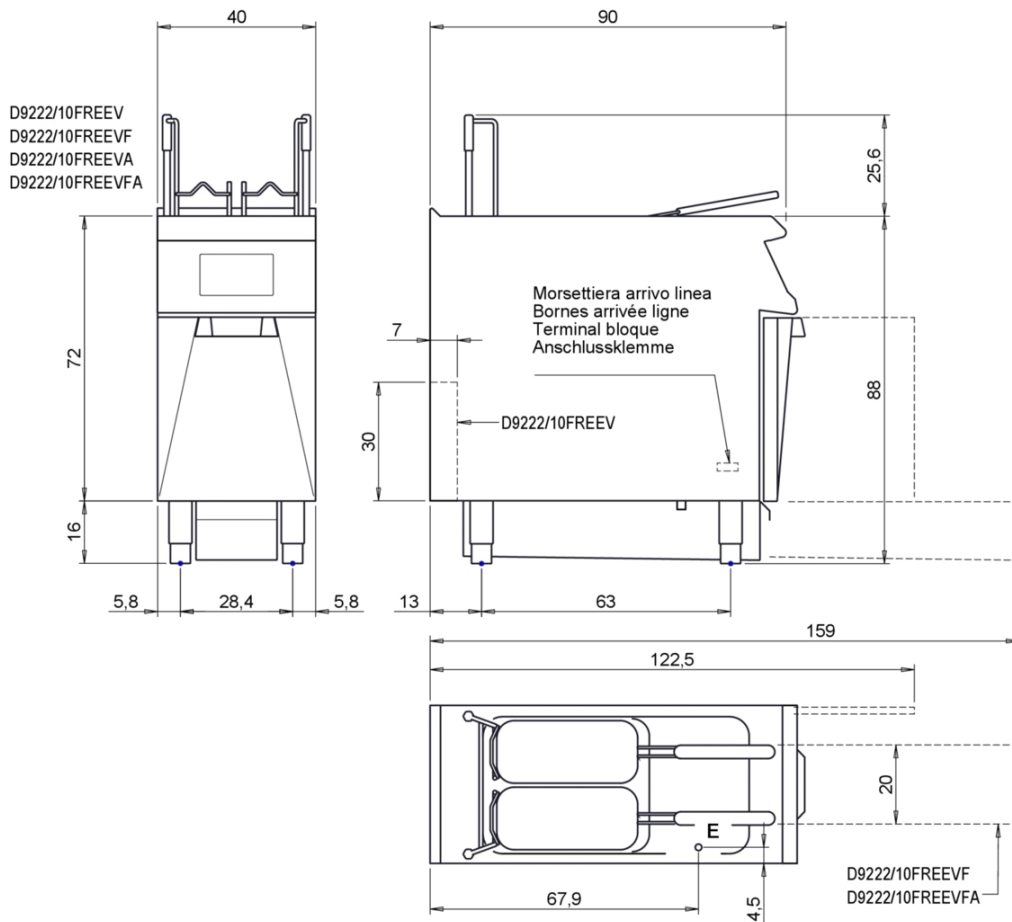
CODICE
CR1209829

MODELLO
D9222/10FREEV

SERIE
DIAMANTE 90

SCHEMA DI INSTALLAZIONE - INSTALLATION DIAGRAM - INSTALLATIONSPLAN - SCHÉMA D'INSTALLATION - ESQUEMA DE INSTALACION - INSTALLATIESCHEMA - IINSTALLATIONSRIJNINGAR

MISURE IN cm - DIMENSIONS IN cm - ABMESSUNGEN IN cm - MESURES EN cm
MEDIDAS EN cm - MATEN IN cm - DIMENSIONES EN cm



| Legenda - Legende - Key - Légende - Leyenda - Legenda - Legenda | |
|--|---|
| E Pressacavo entrata linea elettrica - Stopfbuchse - Electric cable stress relief - Presse étoupe de câble él - Pisacable - Elektrische kabelwartel - Entrada cabo eléctrico | G Arrivo gas - Gasanschluss - Gas connection - Arrivée gaz - Union de gas - Gasaansluiting - Ligação gás |
| S Attacco scarico acqua - Wasserablauf - Water outlet - Vidange de l'eau - Desaguadero - Wateraftapaansluiting - Junção descarga água | H20 Arrivo acqua - Wasseranschluss - Water inlet - Arrivée eau - Union de agua - Wateraansluiting - Junção alimentação água |
| S1 Scarico vasca - Wannenabflussrohr - Pan outlet - Vidange du bac - Descarga cuba - Water toevoer - Descarga da cuba | A1 = Calda - Heiss - Warm - Chaude - Caliente - Warm - Morno A2 = Fredda - Kalt - Cold - Froid - Fria - Koude - Frio |
| S2 Valvola di depressione - Anti-depression valve - Unterdruck ventil - Soupape de dépression - Válvula de depresión - Onderdruk klep - Válvula de depressão | |
| S3 Scarico acqua interapedine - Wasserablauf Zwischenraum - Jacket water drain Evacuation eau double envelope - Descarga de agua intersticios - Afvoer water tussenruimte - Descarga de água na marmitta com Sistema de aquecimento indirecto | |
| S4 Scarico - Abflussrohr - Drain - Tuyau d'évacuation - Tubo de drenaje - Aftapbuis - Tubulação de dreno | L Rubinetto di livello - Level tap - Wasserhahn - Robinet de niveau - Grifo de nivel - Niveaakraan - Torneira de nível |

EVO ELECTRIC FRYER 1 TANK 22lt

CODICE
CR1209829

MODELLO
D9222/10FREEV

SERIE
DIAMANTE 90



In the electric version, the heating element can be rotated by more than 90°.



Moulded inner basin for easy cleaning.



Control panel with high-resolution 7" touch screen display, simple and intuitive.



Equipment certified for low voltage directive 2014/35/EU according to the international CB scheme.

EVO ELECTRIC FRYER 1 TANK 22lt

CODICE
CR1209829

MODELLO
D9222/10FREEV

SERIE
DIAMANTE 90

ACCESSORIES

| CODE | MODELLO | DESCRIZIONE |
|------------|-----------|--|
| 9FFE22 | CR1652579 | TANK BOTTOM FILTER FOR ELECTRIC FRYERS 22 LT |
| CR0989909 | CR0989909 | BASKET GN 1/2 |
| CR0592130 | CR0592130 | BASKET GN 1/1 |
| CR0999999 | D9KRS23HF | Tank filling and emptying kit for versions with automatic filtering |
| CR0592779 | ZF4 | Front plinth - FOR INSTALLING EQUIPMENT WITH FLOOR HEIGHT 90 CM L=40 |
| CR0592830 | ZG | SKIRTING JOINT |
| CR0592820 | 9ZL | Side plinth |
| MA97432000 | R | WHEEL KIT (2 + 2) Ø 100 |
| MA97433000 | RI | WHEEL KIT (2 + 2) Ø 101 STAINLESS STEEL |
| CR0592869 | PZM | NO. 4 STAINLESS STEEL FEET FOR INSTALLATION ON CONCRETE PLINTH |
| CR0593580 | 9PT | No. 4 stainless steel feet for installation on tops |
| CR0592879 | KPA | N.2 STAINLESS STEEL FEET WITH FLANGE |