

FRY TOP Electric M120 Chrome Plate - 1/3 RIBBED

- Top Version



weinnovate cooking

CODICE
CR1139159

MODELLO
DT96/10TFTEC1/3R

SERIE
DIAMANTE 90 TOUCH



GENERAL CHARACTERISTICS

Diamond 90 Touch - Everything under control Everything is under control, perfect results every time. Thanks to the practical display, parameter selection is quick and precise. Easy and clear temperature management, and special functions are always visible and accessible from the display. Tradition and innovation, everything on your worktop A new non-slip square and rounded knob design for a more ergonomic grip and an embossed indicator that makes it easier to select the datum to be set. And with the exclusive Encoder Functionality, simply touch the parameter you want, turn the knob to adjust the level and press it to start the set datum. With water- and dirt-proof crown. Quick and precise parameter selection. Easy and clear temperature management. Special functions always visible and accessible from the display. Stainless steel outer shells and feet. Height from the work surface adjustable from 840 to 900mm. Tops with 2 mm thickness

TECHNICAL SPECIFICATIONS

■ Possibility of setting 2 timers to control cooking. An acoustic signal warns the operator at the end of the set time. ■ Plate with armoured incoloy heating elements placed under the bottom for cooking with temperature uniformity. ■ Predisposition for core probe, for even greater cooking control. Reaching the set core temperature is signalled by an acoustic signal ■ Plate welded to the hob for a larger

cooking zone. ■ Temperature control via touch screen and adjustment with ergonomic knob ■ Everything is under control, perfect results every time. Thanks to the practical display, parameter selection is quick and precise. Easy and clear temperature management, and special functions are always visible and accessible from the display. ■ Thanks to the jet-proofing certification (IPX5) obtained through specific tests, knobs and under-knobs can be washed, without compromising functionality and safety.

FRY TOP Electric M120 Chrome Plate - 1/3 RIBBED

- Top Version

CODICE
CR1139159

MODELLO
DT96/10TFTEC1/3R

SERIE
DIAMANTE 90 TOUCH

Technical Information

SPECIFICATION	DATA
MATERIAL	CR1139159
COMMERCIAL LINE	DIAMANTE TOUCH
SUPPLY	ELECTRICS
DIM. WIDTH	1200 mm
DIM. PRODUCTIVITY	900 mm
DIM. HEIGHT	250 mm
PACKAGE LENGTH	950 mm
PACKAGE WIDTH	1250 mm
PACKAGING HEIGHT	500 mm
STANDARD POWER SUPPLY	380-415V 3N
FREQUENCY	50-60 Hz
ELECTRICAL POWER	22.5 kW
IP GRADE	IPX5
CERTIFIED MODEL	DT96/10TFTEC1/3R

FRY TOP Electric M120 Chrome Plate - 1/3 RIBBED

- Top Version



weinnovate cooking

CODICE
CR1139159

MODELLO
DT96/10TFTEC1/3R

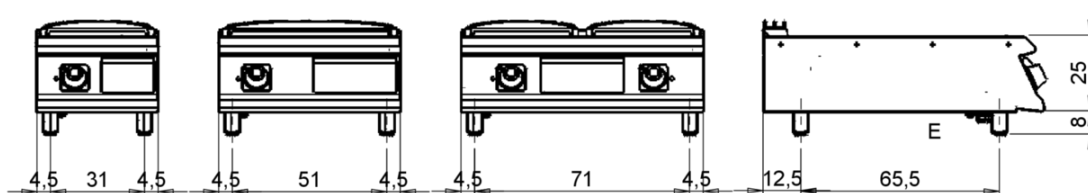
SERIE
DIAMANTE 90 TOUCH

MISURE IN cm - DIMENSIONS IN cm - ABMESSUNGEN IN cm- MESURES EN cm
MEDIDAS EN cm - MATEN IN cm - DIMENSIONES EN cm

D92/10STFTE..

D93/10STFTE..

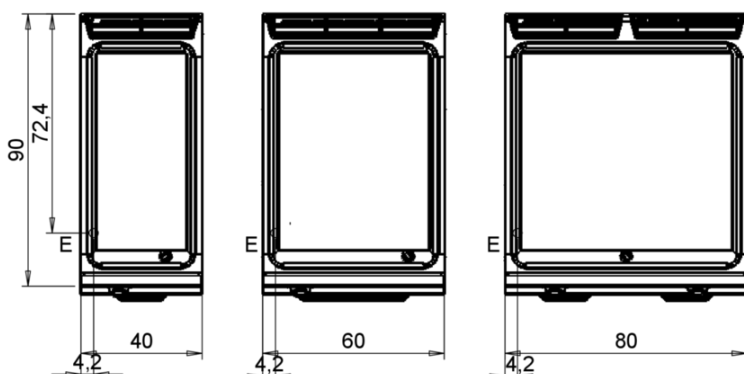
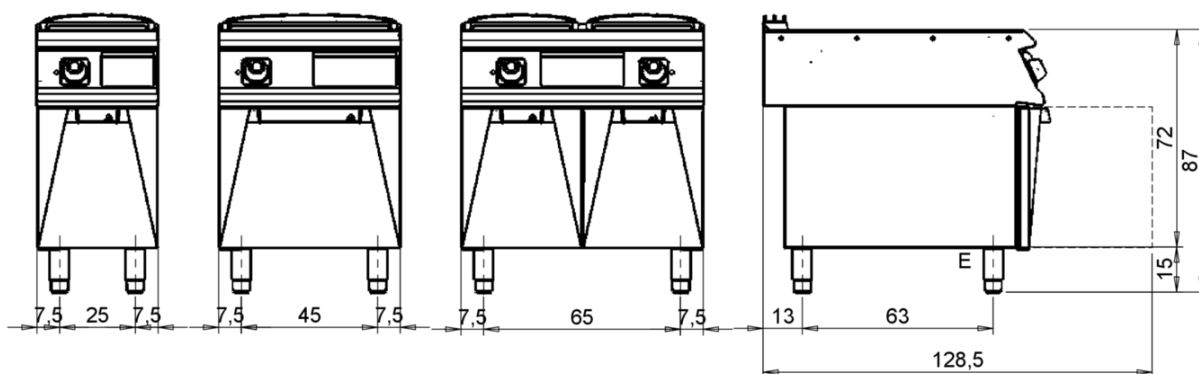
D94/10STFTE..



D92/10SFTE..

D93/10SFTE..

D94/10SFTE..



Legenda - Legende - Key - Légende - Leyenda - Legenda - Legenda

E Pressacavo entrata linea elettrica - Stopfbuchse - Electric cable stress relief - Presse étoupe de câble él - Pisacable - Elektrische kabelwartel - Entrada cabo eléctrico	G Arrivo gas - Gasanschluss - Gas connection - Arrivée gaz - Union de gas - Gasaansluiting - Ligação gás
S Attacco scarico acqua - Wasserablauf - Water outlet - Vidange de l'eau - Desaguadero - Wateraftapaansluiting - Junção descarga água	H20 Arrivo acqua - Wasseranschluss - Water inlet - Arrivée eau - Union de água - Wateraansluiting - Junção alimentação água
S1 Scarico vasca - Wannenabflussrohr - Pan outlet - Vidange du bac - Descarga cuba - Water toevoer - Descarga da cuba	A1 = Calda - Heiss - Warm - Chaude - Caliente - Warm - Morno
S2 Valvola di depressione - Anti-depression valve - Unterdruck ventil - Soupape de dépression - Válvula de depresión - Onderdrukklep - Válvula de depressão	A2 = Fredda - Kalt - Cold - Froid - Fria - Koude - Frio
S3 Scarico acqua intercapedine - Wasserablauf Zwischenraum - Jacket water drain Evacuation eau double envelope - Descarga de agua intersticios - Afvoer water tussenruimte - Descarga de água na marmitta com Sistema de aquecimento indirecto	
S4 Scarico - Abflussrohr - Drain - Tuyau d'évacuation - Tubo de drenaje - Aftapbuis - Tubulação de dreno	L Rubinetto di livello - Level tap - Wasserhahn - Robinet de niveau - Grifo de nivel - Niveaukraan - Torneira de nível

FRY TOP Electric M120 Chrome Plate - 1/3 RIBBED

- Top Version



weinnovate cooking

CODICE
CR1139159

MODELLO
DT96/10TFTEC1/3R

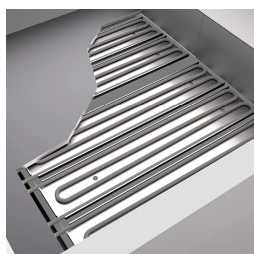
SERIE
DIAMANTE 90 TOUCH



Possibility of setting 2 timers to control cooking. An acoustic signal warns the operator at the end of the set time.



Everything is under control, perfect results every time. Thanks to the practical display, parameter selection is quick and precise. Easy and clear temperature management, and special functions are always visible and accessible from the display.



Predisposition for core probe, for even greater cooking control. Reaching the set core temperature is signalled by an acoustic signal



Everything is under control, perfect results every time. Thanks to the practical display, parameter selection is quick and precise. Easy and clear temperature management, and special functions are always visible and accessible from the display.



Plate welded to the hob for a larger cooking zone.



Thanks to the jet-proofing certification (IPX5) obtained through specific tests, knobs and under-knobs can be washed, without compromising functionality and safety.



Temperature control via touch screen and adjustment with ergonomic knob

FRY TOP Electric M120 Chrome Plate - 1/3 RIBBED

- Top Version

CODICE	MODELLO	SERIE
CR1139159	DT96/10TFTEC1/3R	DIAMANTE 90 TOUCH

ACCESSORIES

CODE	MODELLO	DESCRIZIONE
CR0957610	90XFTP12	SPLASH GUARD FOR FRY TOP MODULE 120
CR0592079	NXFTC4	Fry top cleaning drawer M40-M120
CR0592089	NXFTC6/8	Fry top cleaning drawer M40-M60-M80-M120
CR0592060	NXFTT	PLANCHA CLEANING PLUG
CR1356399	RPR	Striped chrome plate scraper
CR1354989	PRPC	Smooth plate cleaning scraper - chrome-plated
CR1354999	PKLR	Replacement blades (10PCS)
CR0996979	DBVP4	Diamond door 39.5x3.6x46.5 cm for 40 cm compartments
CR0997009	DBVPA4	Accessory Diamond door 39.5x3.6x46.5 cm for 40 cm compartments
CR0997029	DAPC	Accessories for accessory diamond knife holder
CR0997019	DAPD	Accessories for Diamond door accessories
CR0997039	DAPS	Accessories for diamond spice rack
CR0997049	DAPM	Accessories for accessory Diamond door
CR0997059	DAPDB	Accessories for accessory Diamond door/bottle holders
CR1353589	DBVC4	Drawer kit 39.5x56x46.5 cm for compartments of 40