

WOK INDUCTION - 5kw On cabinet

CODICE
CR1359249T

MODELLO
DT92/10GCIW

SERIE
DIAMANTE 90 TOUCH



GENERAL CHARACTERISTICS

Diamond 90 Touch - Everything under control Everything is under control, perfect results every time. Thanks to the practical display, parameter selection is quick and precise. Easy and clear temperature management, and special functions are always visible and accessible from the display. Tradition and innovation, everything on your worktop A new non-slip square and rounded knob design for a more ergonomic grip and an embossed indicator that makes it easier to select the datum to be set. And with the exclusive Encoder Functionality, simply touch the parameter you want, turn the knob to adjust the level and press it to start the set datum. With water- and dirt-proof crown. Quick and precise parameter selection. Easy and clear temperature management. Special functions always visible and accessible from the display. Stainless steel outer shells and feet. Height from the work surface adjustable from 840 to 900mm. Tops with 2 mm thickness

TECHNICAL SPECIFICATIONS

■ Unbreakable glass-ceramic top. ■ Serigraphs identifying cooking zones. ■ Safety sensor to prevent overheating. ■ Power adjustable to 12 levels Heating by means of an inductor equipped with a device that detects the presence of the cooking vessel on the cooking zone and automatically activates/deactivates heating.

■ Possibility of setting 2 timers to control cooking. An acoustic signal warns the operator at the end of the set time. ■ Power level control via touch screen and adjustment with ergonomic knob ■ High

power, full-field capability. automatic detection of the presence of pans. ■ Everything is under control, perfect results every time. Thanks to the practical display, parameter selection is quick and precise. Easy and clear temperature management, and special functions are always visible and accessible from the display. ■ Thanks to the jet-proofing certification (IPX5) obtained through specific tests, knobs and under-knobs can be washed, without compromising functionality and safety.

WOK INDUCTION - 5kw On cabinet

CODICE
CR1359249T

MODELLO
DT92/10GCIW

SERIE
DIAMANTE 90 TOUCH

Technical Information

SPECIFICATION	DATA
MATERIAL	CR1359249T
DEFINITION	DT92/10 GCIW WOK M40 ELETTRON. A/G
COMMERCIAL LINE	DIAMANTE
SUPPLY	ELECTRICS
DIM. WIDTH	400 mm
DIM. PRODUCTIVITY	900 mm
DIM. HEIGHT	250 mm
NET WEIGHT	0 Kg
VOLUME (net)	0,090
PACKAGE LENGTH	0 mm
PACKAGE WIDTH	0 mm
PACKAGING HEIGHT	0 mm
PACKAGE VOLUME	0,000 m3
GROSS PACKING WEIGHT	0 Kg
STANDARD POWER SUPPLY	400V 3
FREQUENCY	50 Hz
ELECTRICAL POWER	5,000 kW
IP GRADE	IPX5
CERTIFIED MODEL	D92/10 TCIW

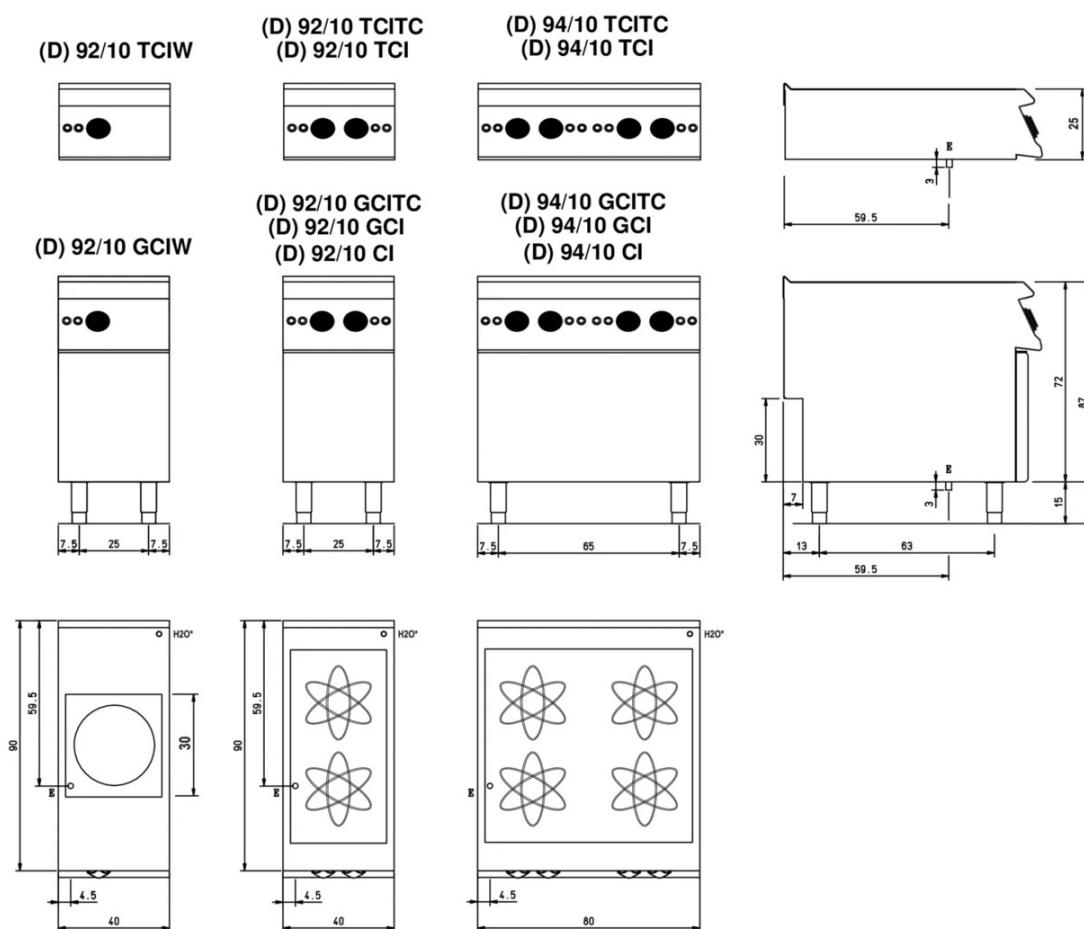
CODICE
CR1359249T

MODELLO
DT92/10GCIW

SERIE
DIAMANTE 90 TOUCH

SCHEMA DI INSTALLAZIONE - INSTALLATION DIAGRAM - INSTALLATIONSPLAN - SCHÉMA D'INSTALLATION - ESQUEMA DE INSTALACION - INSTALLATIESCHEMA - IINSTALLATIONSRTNINGAR

MISURE IN cm - DIMENSIONS IN cm - ABMESSUNGEN IN cm
MESURES EN cm - MEDIDAS EN cm - MATEN IN cm



Legenda - Legende - Key - Légende - Leyenda - Legenda

E Pressacavo entrata linea elettrica - Stopfbuchse - Electric cable stress relief
Presse étoupe de câble él. - Pisacable - Elektrische kabelwartel

H2O* Attacco arrivo acqua - Wasseranschluss - Water inlet
Arrivée eau - Union de agua - Wateraansluiting
EN ISO 228-1 G 3/4

WOK INDUCTION - 5kw On cabinet

CODICE
CR1359249T

MODELLO
DT92/10GCIW

SERIE
DIAMANTE 90 TOUCH



Possibility of setting 2 timers to control cooking. An acoustic signal warns the operator at the end of the set time.



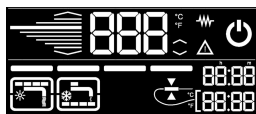
Thanks to the jet-proofing certification (IPX5) obtained through specific tests, knobs and under-knobs can be washed, without compromising functionality and safety.



Power level control via touch screen and adjustment with ergonomic knob



High power, full-field capability.
automatic detection of the presence of pans.



Everything is under control, perfect results every time. Thanks to the practical display, parameter selection is quick and precise. Easy and clear temperature management, and special functions are always visible and accessible from the display.

WOK INDUCTION - 5kw On cabinet

CODICE
CR1359249T

MODELLO
DT92/10GCIW

SERIE
DIAMANTE 90 TOUCH

ACCESSORIES

CODE	MODELLO	DESCRIZIONE
CR1357559	OC-T4W	WIFI connectivity retrofit kit
CR0996979	DBVP4	Diamond door 39.5x3.6x46.5 cm for 40 cm compartments
CR0997009	DBVPA4	Accessory Diamond door 39.5x3.6x46.5 cm for 40 cm compartments
CR0997029	DAPC	Accessories for accessory diamond knife holder
CR0997019	DAPD	Accessories for Diamond door accessories
CR0997039	DAPS	Accessories for diamond spice rack
CR0997049	DAPM	Accessories for accessory Diamond door
CR0997059	DAPDB	Accessories for accessory Diamond door/bottle holders
CR1353589	DBVC4	Drawer kit 39.5x56x46.5 cm for compartments of 40