

# 1-BASIN ELECTRIC PASTA-COOKER 28LTS.

CODE  
CR1207349

MODEL  
DPCPE40

SERIE  
DROPIN70

Project: .....

Rev.: .....

Zone: .....

Location: .....



we innovate cooking



## GENERAL FEATURES

- A complete and versatile inset range. Compatible with every type of design, including open-plan, the Olis Drop-in line makes the most of available space. It also offers a wide range of bespoke inset solutions.
- 

## TECHNICAL DATA

- 1-BASIN ELECTRIC PASTA-COOKER 28 LTS.
- Outer casing in stainless steel.
- Moulded AISI 316 stainless steel pan with rounded edges to guarantee maximum corrosion resistance.
- Electrovalve-controlled fast or slow water loading operations.
- Stainless steel water dispenser
- Safety manostat to avoid heating operations when no water in bowl.
- AISI 304 stainless steel armoured heaters positioned in the bowl for heating operations; can be rotated 90° to allow cleaning.

# 1-BASIN ELECTRIC PASTA-COOKER 28LTS.

CODE  
CR1207349

MODEL  
DPCPE40

SERIE  
DROPIN70

## TECHNICAL INFORMATION

SPECIFICATIONS	DATA
CODE	CR1207349
DEFINITION	DPCPE40 CUOCIPASTA EL.M40 DROP-IN
COMMERCIAL LINE	SERIE DROP IN
SUPPLY	ELETTRICA
WIDTH	400 MM
DEPTH	625 MM
HEIGHT	560 MM
VOLUME	0,140 M3
PACKAGING LENGTH	440,000
PACKAGING WIDTH	850,000
PACKAGING HEIGHT	1060,000
PACKAGING VOLUME	0,396
POWER SUPPLY VOLTAGE STANDARD	380-415V 3N
FREQUENCY	50-60 Hz
ELECTRIC POWER	5,670 KW
IPX PROTECTION	IPX4
CERTIFIED MODEL	DPCPE40
CERTIFICATION NUMBER	-

# 1-BASIN ELECTRIC PASTA-COOKER 28LTS.

CODE  
CR1207349

MODEL  
DPCPE40

SERIE  
DROPIN70

## ACCESSORIESES

CODE	MODEL	DESCRIPTION
CR1201900	DI-4-F	FRAME KIT FOR FLUSH INSTALLATION-4-F
CR1201930	DI-4-A	FRAME KIT FOR TOP-MOUNT INSTALLATION-4-A
CR0999079	CCP12	CCP12 BASKET CP GN1/2 IMP. LATERAL
CR0999089	CCP13L	CCP13L BASKET CP GN1/3 IMP. LATERAL
CR0999099	CCP13F	CCP13F BASKET CP GN1/3 IMP. FRONTAL
CR0999109	CCP16D	CCP16D BASKET CP GN1/6 IMP. RIGHT
CR0999119	CCP16S	CCP16S BASKET CP GN1/6 IMP. LEFT
CR0999129	CCP19	CCP19 BASKET CP GN1/9 IMP. FRONTAL
CR0999139	GFCP26	GFCP26 BOTTOM GRID CP TANK 26LT
CR0999159	CVCP26	CVCP26 Lids for CP TANK 26LT
CR0999229	7KIT-A	7KIT - A KIT BASKET PASTA-COOKERS
CR0999239	7KIT-B	7KIT - B KIT BASKET PASTA-COOKERS
CR0999249	7KIT-C	7KIT - C KIT BASKET PASTA-COOKERS

# 1-BASIN ELECTRIC PASTA-COOKER 28LTS.

CODE  
CR1207349

MODEL  
DPCPE40

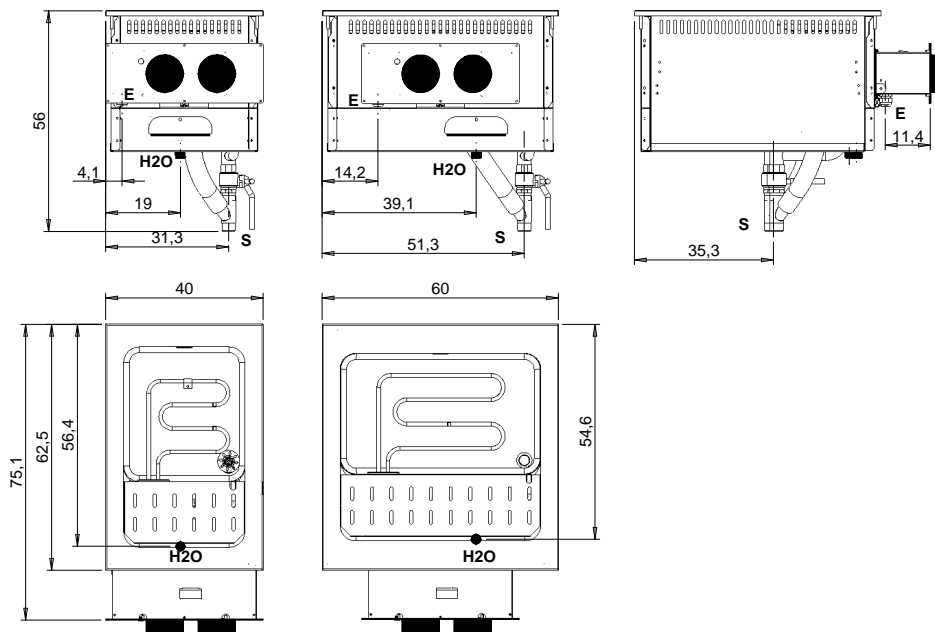
SERIE  
DROPIN70

## SCHEMA DI INSTALLAZIONE - INSTALLATION DIAGRAM - INSTALLATIONSPLAN - SCHÉMA D'INSTALLATION - ESQUEMA DE INSTALACION -INSTALLATIESCHEMA - IINSTALLATIONSRIITNINGAR

MISURE IN cm - DIMENSIONS IN cm - ABMESSUNGEN IN cm- MESURES EN cm  
MEDIDAS EN cm - MATEN IN cm - DIMENSIONES EN cm

**NPC74ED** | **DPCPE40**  
**DPDE28** | **DI7CPE428**

**NPC76ED** | **DPCPE60**  
**DPDE42T** | **DI7CPE642**



### Legenda - Legende - Key - Légende - Leyenda - Legenda

<b>E</b>	Pressacavo entrata linea elettrica - Stopfbuchse - Electric cable stress relief - Presse étoupe de câble él - Pisacable - Elektrische kabelwartel - Entrada cabo eléctrico	<b>G</b>	Arrivo gas - Gasanschluss - Gas connection - Arrivée gaz - Union de gas - Gasaansluiting - Ligação gás
<b>S</b>	Attacco scarico acqua - Wasserablauf - Water outlet - Vidange de l'eau - Desaguadero - Wateraftapaansluiting - Junção descarga água <b>EN 10226-1R1</b>	<b>H2O</b>	Arrivo acqua - Wasseranschluss - Water inlet - Arrivée eau - Union de agua - Wateraansluiting - Junção alimentação água
<b>S1</b>	Scarico vasca - Wannenabflusrohr - Pan outlet - Vidange du bac - Descarga cuba - Water toevoer - Descarga da cuba	<b>A1 =</b>	Calda - Heiss - Warm - Chaude - Caliente - Warm - Morno
<b>S2</b>	Valvola di depressione - Anti-depression valve - Unterdruck ventil - Soupape de dépression - Válvula de depresión - Onderdrukklep - Válvula de depressão	<b>A2 =</b>	Fredda - Kalt - Cold - Froid - Fria - Koude - Frio
<b>S3</b>	Scarico acqua intercapedine - Wasserablauf Zwischenraum - Jacket water drain Evacuation eau double envelope - Descarga de agua intersticios - Afvoer water tussenruimte - Descarga de água na marmitta com Sistema de aquecimento indirecto		<b>EN ISO 228-1 G 3/4</b>
<b>S4</b>	Scarico - Abflusrohr - Drain - Tuyau d'évacuation - Tubo de drenaje - Aftapbuis - Tubulação de dreno	<b>L</b>	Rubinetto di livello - Level tap - Wasserhahn - Robinet de niveau - Grifo de nivel - Niveaakraan - Torneira de nível