

ROLL-IN STORAGE CABINET 1 DOOR - TEMP.

-15/-20 °C

CODICE
RI70BT

MODELLO
RI70BT

SERIE
REFRIGERATED
CABINETS



GENERAL CHARACTERISTICS

The main advantage of good refrigeration is to store food safely and hygienically, reducing the risk of contamination and spoilage. With their stainless steel capacity and structure, the refrigeration equipment ensures optimal preservation of vegetables, meat, fish, ice cream and creams, while maintaining their flavour and fragrance. Compliance with hygiene and food safety standards, reduced energy costs and increased efficiency in kitchen work are aspects that guided OLIS in the development of a new range of refrigeration equipment.

One-piece construction with AISI304 stainless steel interior and exterior finish. Dashboard openable for easy periodic maintenance (condenser cleaning). Inner compartment moulded sides, 3 Rilsan GN2/1 grids included. External back and sternum base in pre-painted steel. Magnetic gasket on all four sides and counter-magnet on the gasket rebates. Ergonomic full-height handle recessed into the front of the door for easy opening in any type of installation. Indirect ventilation thanks to the full-height ducting system for optimal air circulation and uniform temperature distribution. Environmentally friendly refrigerant R290

TECHNICAL SPECIFICATIONS

- Monocoque construction in AISI304 Scotch-Brite satin stainless steel
- Insulation in CFC and HCFC-free PU, thickness 80 mm (70mm version COMPACT)
- Automatic defrosting and evaporation of condensed water
- Full-height ergonomic handles and magnetic seals on 3 sides
- Internal bumper on all sides

■ Panel construction.

Capacity of the wheeled containers: GN 2/1 or EN 400x600 mm or 600x800 mm.

Finely SCOTCH-BRITE satined exterior PU, CFC and HCFC free

insulation, thickness 80 mm.

Automatic defrost and condensate evaporation device without the need for any electricity.

Large capacity makes it possible to insert trolleys up to overall dimensions: 700x900x1860 mm.

Ergonomic full height handles and magnetic seals on 4 sides.

Self-closing doors with 100° opening lock.

Insulated floor in AISI 304 18/10 steel for the BT version.

Bumpers on the back and inside of the door in stainless steel.

Refrigerated versions (built-in condensing unit).

ROLL-IN STORAGE CABINET 1 DOOR - TEMP.

-15/-20 °C

CODICE
RI70BT

MODELLO
RI70BT

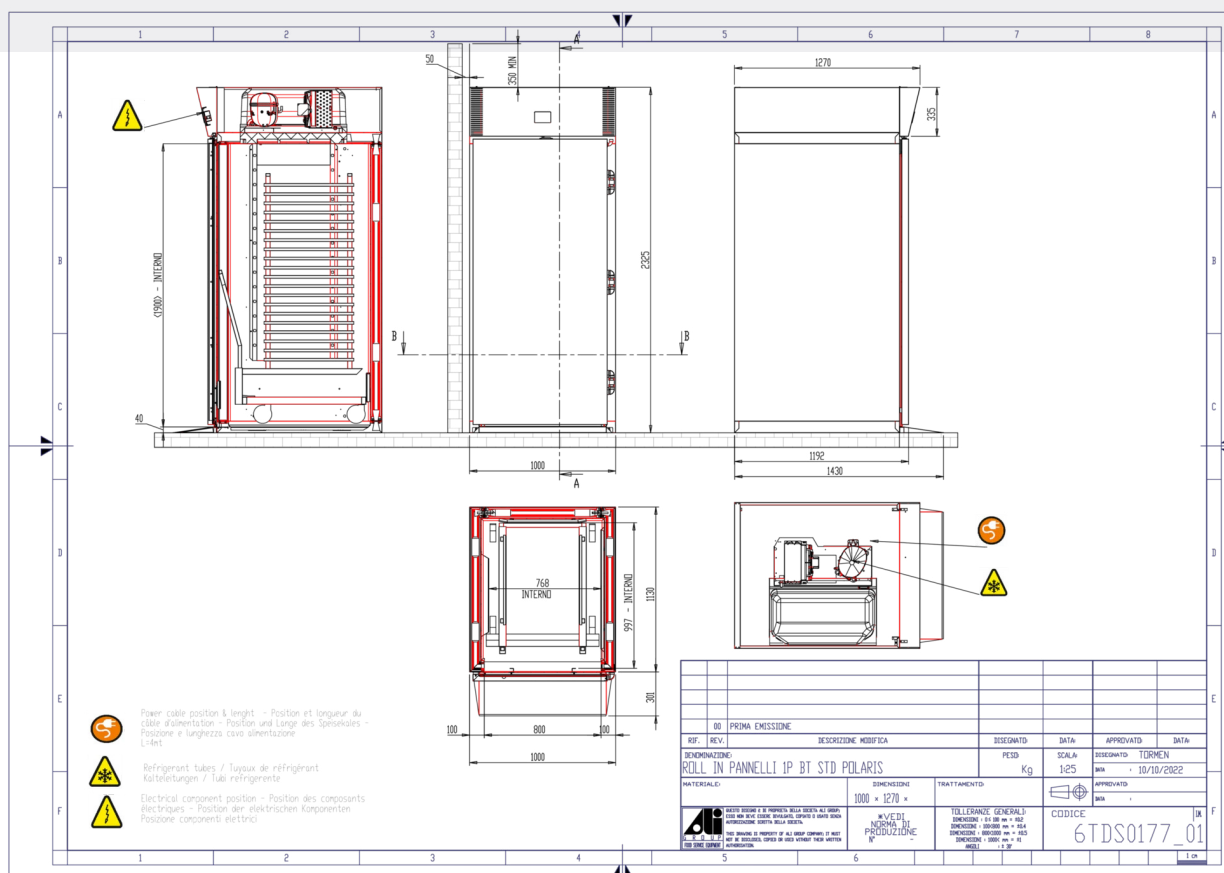
SERIE
REFRIGERATED
CABINETS

Technical Information

SPECIFICATION	DATA
MATERIAL	RI70BT
DIM. WIDTH	1000 mm
DIM. PRODUCTIVITY	1270 mm
DIM. HEIGHT	2325 mm
NET WEIGHT	200 Kg
PACKAGE VOLUME	2.48 m3
STANDARD POWER SUPPLY	230/1/50
ELECTRICAL POWER	0.53 kW
GAS/REFRIGERANT TYPE	R290A
REFRIGERATION POWER	1.379
Capacity	1480

-15/-20 °C

SERIE
REFRIGERATED
CABINETS



ROLL-IN STORAGE CABINET 1 DOOR - TEMP.

-15/-20 °C

CODICE
RI70BT

MODELLO
RI70BT

SERIE
REFRIGERATED
CABINETS

ACCESSORIES

CODE	MODELLO	DESCRIZIONE
TR 20 GN1/1 HT	TR 20 GN1/1 HT	20 RACK TROLLEY GN1/1 TEMP. -40°+280°
TR 20 GN2/1 HT	TR 20 GN2/1 HT	20 RACK TROLLEY GN1/2 TEMP. -40°+280°
TR 16 EN1	TR 16 EN1	16 TRAY TROLLEY EN 400X600
TR 32 EN1	TR 32 EN1	32 TRAY TROLLEY EN 400X600
TR 16 EN2	TR 16 EN2	16 TRAY TROLLEY EN 600X800
TR 32 EN2	TR 32 EN2	32 TRAY TROLLEY EN 600X800