

ELECTRIC BAIN-MARIE ON CABINET

CODICE
CR0990349

MODELLO
D74/10CBE

SERIE
DIAMANTE 70



GENERAL CHARACTERISTICS

In addition to offering the widest choice of solutions and 2 mm thick and 70 cm deep tops, this series has all the power, robustness and functionality you need to work efficiently. Scotch Brite finish stainless steel outer shells and feet. Worktop height adjustable from 840 to 900 mm. Modularity of range: 200-400-600-800-1200. Wide range of accessories.

TECHNICAL SPECIFICATIONS

■ Adjustable temperature in tank with overflow and perforated false bottom for supporting containers. GN-sized tank. ■ Equipment

certified for low voltage directive 2014/35/EU according to the international CB scheme. ■ Thanks to the jet-proofing certification obtained in specific tests, the knobs and under-knobs can be washed, without compromising functionality and safety.

ELECTRIC BAIN-MARIE ON CABINET

CODICE
CR0990349

MODELLO
D74/10CBE

SERIE
DIAMANTE 70

Technical Information

| SPECIFICATION | DATA |
|-----------------------|---------------------------------------|
| MATERIAL | CR0990349 |
| DEFINITION | D74/10 CBE BAGNOMARIA EL. M80 VANO G. |
| COMMERCIAL LINE | DIAMANTE |
| SUPPLY | ELECTRICS |
| DIM. WIDTH | 800 mm |
| DIM. PRODUCTIVITY | 730 mm |
| DIM. HEIGHT | 870 mm |
| NET WEIGHT | 49 Kg |
| VOLUME (net) | 0,508 |
| PACKAGE LENGTH | 840 mm |
| PACKAGE WIDTH | 850 mm |
| PACKAGING HEIGHT | 1170 mm |
| PACKAGE VOLUME | 0,836 m3 |
| GROSS PACKING WEIGHT | 62.4 Kg |
| STANDARD POWER SUPPLY | 380-415V 3N |
| FREQUENCY | 50-60 Hz |
| ELECTRICAL POWER | 5,400 kW |
| IP GRADE | IPX4 |
| CERTIFIED MODEL | D74/10 CBE |

CODICE
CR0990349

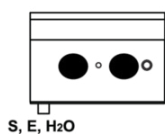
MODELLO
D74/10CBE

SERIE
DIAMANTE 70

SCHEMA DI INSTALLAZIONE - INSTALLATION DIAGRAM - INSTALLATIONSPLAN - SCHÉMA D'INSTALLATION - ESQUEMA DE INSTALACION - INSTALLATIESCHEMA - IINSTALLATIONSRTNINGAR

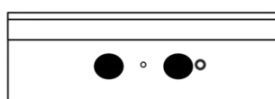
MISURE IN cm - DIMENSIONS IN cm - ABMESSUNGEN IN cm
MESURES EN cm - MEDIDAS EN cm - MATEN IN cm

(D) 72/10 TCBE

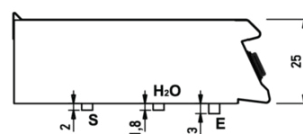


S, E, H₂O

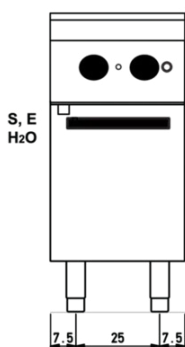
(D) 74/10 TCBE



S, E, H₂O

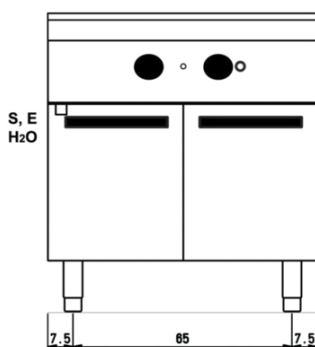


(D) 72/10 CBE

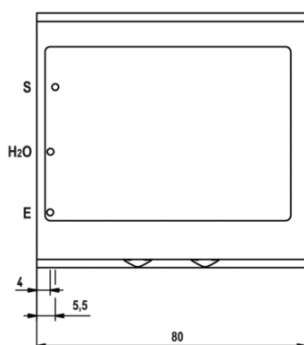
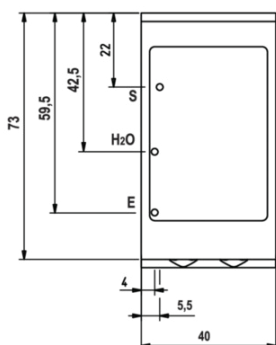
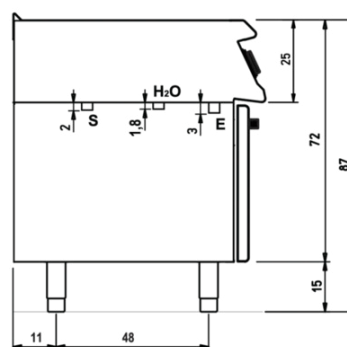


S, E
H₂O

(D) 74/10 CBE



S, E
H₂O



Legenda - Legende - Key - Légende - Leyenda - Legenda

- E** Pressacavo entrata linea elettrica - Stopfbuchse - Electric cable stress relief
Presse étoupe de câble él. - Pisacable - Elektrische kabelwartel
- S** Attacco scarico acqua - Wasserablauf - Water outlet
Vidange de l'eau - Desaguadero - Wateraftapaansluiting
EN 10226-1 R 1/2

- H2O** Attacco arrivo acqua - Wasseranschluss - Water inlet
Arrivée eau - Union de agua - Wateraansluiting
EN ISO 228-1 G 3/4

ELECTRIC BAIN-MARIE ON CABINET

CODICE
CR0990349

MODELLO
D74/10CBE

SERIE
DIAMANTE 70



Adjustable temperature in tank with overflow and perforated false bottom for supporting containers. GN-sized tank.



Equipment certified for low voltage directive 2014/35/EU according to the international CB scheme.



Thanks to the jet-proofing certification (IPX5) obtained through specific tests, knobs and under-knobs can be washed, without compromising functionality and safety.

ELECTRIC BAIN-MARIE ON CABINET

CODICE
CR0990349

MODELLO
D74/10CBE

SERIE
DIAMANTE 70

ACCESSORIES

| CODE | MODELLO | DESCRIZIONE |
|-----------|---------|--|
| CR0996979 | DBVP4 | Diamond door 39.5x3.6x46.5 cm for 40 cm compartments |
| CR0997009 | DBVPA4 | Accessory Diamond door 39.5x3.6x46.5 cm for 40 cm compartments |
| CR0997029 | DAPC | Accessories for accessory diamond knife holder |
| CR0997019 | DAPD | Accessories for Diamond door accessories |
| CR0997039 | DAPS | Accessories for diamond spice rack |
| CR0997049 | DAPM | Accessories for accessory Diamond door |
| CR0997059 | DAPDB | Accessories for accessory Diamond door/bottle holders |
| CR1353589 | DBVC4 | Drawer kit 39.5x56x46.5 cm for compartments of 40 |