

## ELECTRIC BAIN-MARIE ON CABINET

CODICE  
CR0990339

MODELLO  
D72/10CBE

SERIE  
DIAMANTE 70



### GENERAL CHARACTERISTICS

In addition to offering the widest choice of solutions and 2 mm thick and 70 cm deep tops, this series has all the power, robustness and functionality you need to work efficiently. Scotch Brite finish stainless steel outer shells and feet. Worktop height adjustable from 840 to 900 mm. Modularity of range: 200-400-600-800-1200. Wide range of accessories.

### TECHNICAL SPECIFICATIONS

■ Adjustable temperature in tank with overflow and perforated false bottom for supporting containers. GN-sized tank. ■ Equipment

certified for low voltage directive 2014/35/EU according to the international CB scheme. ■ Thanks to the jet-proofing certification obtained in specific tests, the knobs and under-knobs can be washed, without compromising functionality and safety.

## ELECTRIC BAIN-MARIE ON CABINET

CODICE  
CR0990339

MODELLO  
D72/10CBE

SERIE  
DIAMANTE 70

### Technical Information

SPECIFICATION	DATA
MATERIAL	CR0990339
DEFINITION	D72/10 CBE BAGNOMARIA EL. M40 VANO G.
COMMERCIAL LINE	DIAMANTE
SUPPLY	ELECTRICS
DIM. WIDTH	400 mm
DIM. PRODUCTIVITY	730 mm
DIM. HEIGHT	870 mm
NET WEIGHT	30 Kg
VOLUME (net)	0,254
PACKAGE LENGTH	450 mm
PACKAGE WIDTH	850 mm
PACKAGING HEIGHT	1150 mm
PACKAGE VOLUME	0,440 m3
GROSS PACKING WEIGHT	39.4 Kg
STANDARD POWER SUPPLY	220-240V 1N
FREQUENCY	50-60 Hz
ELECTRICAL POWER	1,800 kW
IP GRADE	IPX4
CERTIFIED MODEL	D72/10 CBE

CODICE  
CR0990339

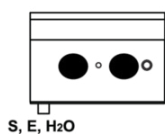
 MODELLO  
D72/10CBE

 SERIE  
DIAMANTE 70

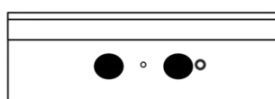
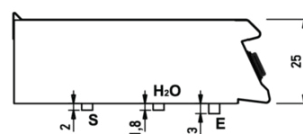
 SCHEMA DI INSTALLAZIONE - INSTALLATION DIAGRAM - INSTALLATIONSPLAN - SCHÉMA D'INSTALLATION -  
ESQUEMA DE INSTALACION - INSTALLATIESCHEMA - IINSTALLATIONSRTNINGAR

 MISURE IN cm - DIMENSIONS IN cm - ABMESSUNGEN IN cm  
MESURES EN cm - MEDIDAS EN cm - MATEN IN cm

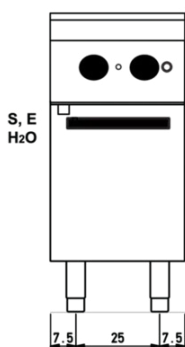
(D) 72/10 TCBE

S, E, H<sub>2</sub>O

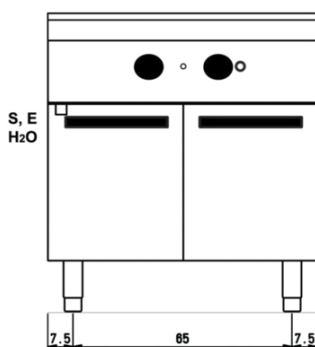
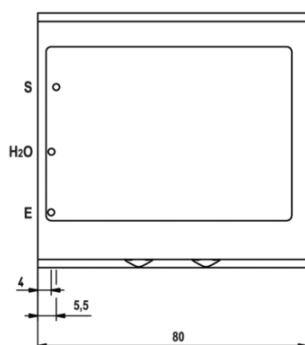
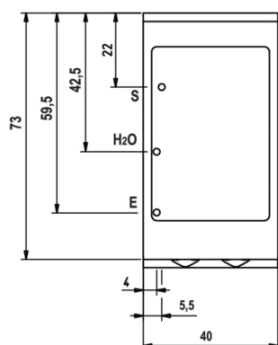
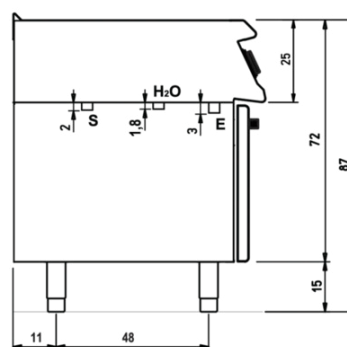
(D) 74/10 TCBE

S, E, H<sub>2</sub>O

(D) 72/10 CBE

S, E  
H<sub>2</sub>O

(D) 74/10 CBE

S, E  
H<sub>2</sub>O

## Legenda - Legende - Key - Légende - Leyenda - Legenda

- E** Pressacavo entrata linea elettrica - Stopfbuchse - Electric cable stress relief  
 Presse étoupe de câble él. - Pisacable - Elektrische kabelwartel
- S** Attacco scarico acqua - Wasserablauf - Water outlet  
 Vidange de l'eau - Desaguadero - Wateraftapaansluiting  
**EN 10226-1 R 1/2**

- H2O** Attacco arrivo acqua - Wasseranschluss - Water inlet  
 Arrivée eau - Union de agua - Wateraansluiting  
**EN ISO 228-1 G 3/4**

## ELECTRIC BAIN-MARIE ON CABINET

CODICE  
CR0990339

MODELLO  
D72/10CBE

SERIE  
DIAMANTE 70



Adjustable temperature in tank with overflow and perforated false bottom for supporting containers. GN-sized tank.



Equipment certified for low voltage directive 2014/35/EU according to the international CB scheme.



Thanks to the jet-proofing certification (IPX5) obtained through specific tests, knobs and under-knobs can be washed, without compromising functionality and safety.

## ELECTRIC BAIN-MARIE ON CABINET

CODICE  
CR0990339

MODELLO  
D72/10CBE

SERIE  
DIAMANTE 70

### ACCESSORIES

CODE	MODELLO	DESCRIZIONE
CR0996979	DBVP4	Diamond door 39.5x3.6x46.5 cm for 40 cm compartments
CR0997009	DBVPA4	Accessory Diamond door 39.5x3.6x46.5 cm for 40 cm compartments
CR0997029	DAPC	Accessories for accessory diamond knife holder
CR0997019	DAPD	Accessories for Diamond door accessories
CR0997039	DAPS	Accessories for diamond spice rack
CR0997049	DAPM	Accessories for accessory Diamond door
CR0997059	DAPDB	Accessories for accessory Diamond door/bottle holders
CR1353589	DBVC4	Drawer kit 39.5x56x46.5 cm for compartments of 40