

GAS FRYER 2 BASINS 17+17 LITRES

CODICE
CR1353639

MODELLO
D7417/10FRIG

SERIE
DIAMANTE 70



GENERAL CHARACTERISTICS

In addition to offering the widest choice of solutions and 2 mm thick and 70 cm deep tops, this series has all the power, robustness and functionality you need to work efficiently. Scotch Brite finish stainless steel outer shells and feet. Worktop height adjustable from 840 to 900 mm. Modularity of range: 200-400-600-800-1200. Wide range of accessories.

TECHNICAL SPECIFICATIONS

■ AISI 18/10 stainless steel tanks with cold zone and foam expansion zone. ■ Oil drain taps. Oil drip pans on request. ■ Safety thermostat (230°C) against excessive oil temperatures.

■ Tank depth and width increased to increase capacity. ■ Moulded basin with flat top and large cold zone for easy cleaning. ■ The large cold zone allows frying residues to settle, significantly extending the

quality and life of the oil. ■ Heating via stainless steel burner outside the tank. ■ Equipment certified for low voltage directive 2014/35/EU according to the international CB scheme. ■ Thanks to the jet-proofing certification (IPX5) obtained through specific tests, knobs and under-knobs can be washed, without compromising functionality and safety.

GAS FRYER 2 BASINS 17+17 LITRES

CODICE
CR1353639

MODELLO
D7417/10FRIG

SERIE
DIAMANTE 70

Technical Information

SPECIFICATION	DATA
MATERIAL	CR1353639
DEFINITION	D7417/10 FRIG FRIGGIT.GAS M80 2V.17+17LT
COMMERCIAL LINE	DIAMANTE
SUPPLY	GAS
DIM. WIDTH	800 mm
DIM. PRODUCTIVITY	730 mm
DIM. HEIGHT	870 mm
NET WEIGHT	90 Kg
VOLUME (net)	0,508
PACKAGE LENGTH	840 mm
PACKAGE WIDTH	850 mm
PACKAGING HEIGHT	1170 mm
PACKAGE VOLUME	0,836 m3
GROSS PACKING WEIGHT	101.8 Kg
GAS POWER	26,00
GAS POWER (G25.3/25mbar)	26,00
CERTIFIED MODEL	D7417/10 FRIG
Capacity	17 litri

GAS FRYER 2 BASINS 17+17 LITRES



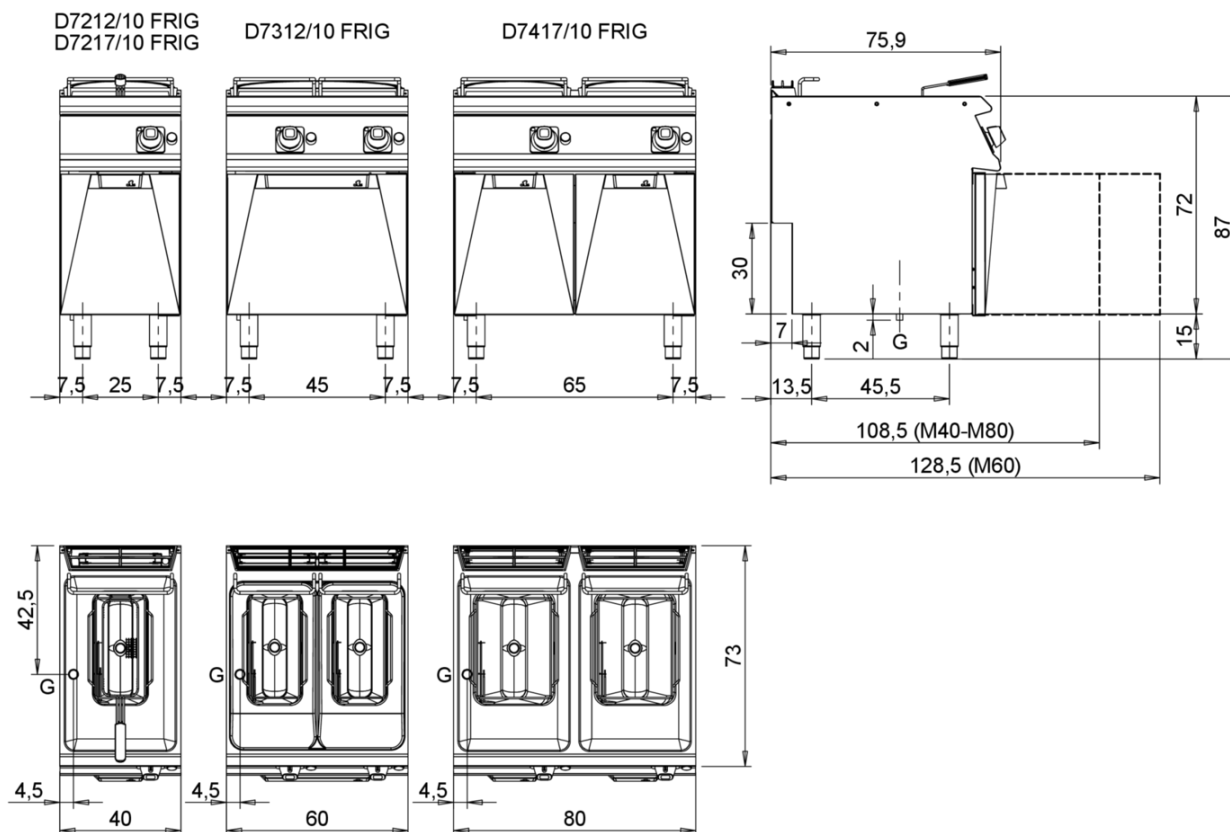
weinnovate cooking

CODICE
CR1353639

MODELLO
D7417/10FRIG

SERIE
DIAMANTE 70

MISURE IN cm - DIMENSIONS IN cm - ABMESSUNGEN IN cm- MESURES EN cm
MEDIDAS EN cm - MATEN IN cm - DIMENSIONES EN cm



Legenda - Legende - Key - Légende - Leyenda - Legenda - Legenda

E Pressacavo entrata linea elettrica - Stopfbuchse - Electric cable stress relief - Presse étoupe de câble él - Pisacable - Elektrische kabelwartel - Entrada cabo eléctrico	G Arrivo gas - Gasanschluss - Gas connection - Arrivée gaz - Union de gas - Gasaansluiting - Ligação gás EN 10226-1 R 1/2; EN ISO 228-1 G 1/2 (DK)
S Attacco scarico acqua - Wasserablauf - Water outlet - Vidange de l'eau - Desaguadero - Wateraftapaansluiting - Junção descarga água	H20 Arrivo acqua - Wasseranschluss - Water inlet - Arrivée eau - Union de agua - Wateraansluiting - Junção alimentação água
S1 Scarico vasca - Wannenabflussrohr - Pan outlet - Vidange du bac - Descarga cuba - Water toevoer - Descarga da cuba	A1 = Calda - Heiss - Warm - Chaud - Caliente - Warm - Morno A2 = Fredda - Kalt - Cold - Froid - Fria - Koude - Frio
S2 Valvola di depressione - Anti-depression valve - Unterdruck ventil - Soupape de dépression - Válvula de depresión - Onderdrukklep - Válvula de depressão	
S3 Scarico acqua intercapedine - Wasserablauf Zwischenraum - Jacket water drain Evacuation eau double envelope - Descarga de agua intersticios - Afvoer water tussenruimte - Descarga de água na marmitta com Sistema de aquecimento indirecto	
S4 Scarico - Abflussrohr - Drain - Tuyau d'évacuation - Tubo de drenaje - Aftapbuis - Tubulação de dreno	L Rubinetto di livello - Level tap - Wasserhahn - Robinet de niveau - Grifo de nivel - Niveaukraan - Torneira de nível

GAS FRYER 2 BASINS 17+17 LITRES

CODICE
CR1353639

MODELLO
D7417/10FRIG

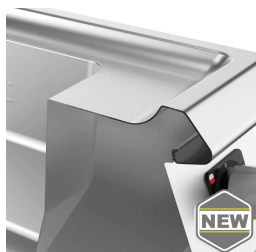
SERIE
DIAMANTE 70



Tank depth and width increased to increase capacity.



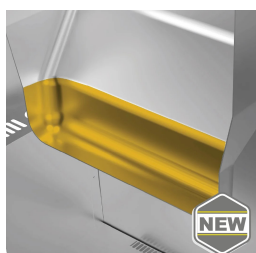
Equipment certified for low voltage directive 2014/35/EU according to the international CB scheme.



Moulded basin with flat top and large cold zone for easy cleaning.



Thanks to the jet-proofing certification (IPX5) obtained through specific tests, knobs and under-knobs can be washed, without compromising functionality and safety.



The large cold zone allows frying residues to settle, significantly extending the quality and life of the oil.



Heating via stainless steel burner outside the tank.

GAS FRYER 2 BASINS 17+17 LITRES

CODICE
CR1353639

MODELLO
D7417/10FRIG

SERIE
DIAMANTE 70

ACCESSORIES

CODE	MODELLO	DESCRIZIONE
CR1353879	DCF15/17	Basket for tub 15 - 17 litres 1 pcs 24x33,7x12 cm capacity 15-17 litres
CR1353889	DCF15/17P	Small basket for tub 15-17 litres 1 pcs 12x33,7x12 cm capacity 15-17 litres
CR1353929	D9BRO	Oil pan 10-12 -15-17-22-23 litres
BN0221100047	CA40/10	Chimney extension for mod. 40 cm h=22 cm
BN0221100048	CA60/10	Chimney extension for mod. 60 cm h=22 cm
CR0592779	ZF4	Front plinth - FOR INSTALLING EQUIPMENT WITH FLOOR HEIGHT 90 CM L=40
CR0592830	ZG	SKIRTING JOINT
CR0592820	9ZL	Side plinth
MA97432000	R	WHEEL KIT (2 + 2) Ø 100
MA97433000	RI	WHEEL KIT (2 + 2) Ø 101 STAINLESS STEEL
CR0592869	PZM	NO. 4 STAINLESS STEEL FEET FOR INSTALLATION ON CONCRETE PLINTH
CR0593580	9PT	No. 4 stainless steel feet for installation on tops
CR0592879	KPA	N.2 STAINLESS STEEL FEET WITH FLANGE
CR0592940	9CAT*	Water column for top equipment