

# 43lt ELECTRIC MANUAL BRATT PAN WITH STAINLESS STEEL BOTTOM

CODICE  
CR0989989

MODELLO  
D74/10KBEI

SERIE  
DIAMANTE 70



## GENERAL CHARACTERISTICS

In addition to offering the widest choice of solutions and 2 mm thick and 70 cm deep tops, this series has all the power, robustness and functionality you need to work efficiently. Scotch Brite finish stainless steel outer shells and feet. Worktop height adjustable from 840 to 900 mm. Modularity of range: 200-400-600-800-1200. Wide range of accessories.

## TECHNICAL SPECIFICATIONS

■ Multifunctional tilting braising pan, equipment for professional catering, suitable for cooking sauces, braises and cooking with oil. ■ It guarantees high performance, exceptional firing uniformity. ■ Water supply directly into the tank via solenoid valve (can be ordered as an accessory). ■ Cooking temperature controlled by thermostat with adjustment from 100 to 280°C.

■ Stainless steel cooking vessel, 10 mm thick. ■ Cooking temperature controlled by thermostat with adjustment from 100 to 280°C. Heating via armoured incoloy heating elements. ■ Robust, double-walled, self-balancing lids made of stainless steel to reduce heat loss. ■ Large-radius tilting tank. ■ Equipment certified for low voltage directive 2014/35/EU according to the international CB scheme. ■ Thanks to the jet-proofing certification obtained through specific tests, the knobs and under-knobs can be washed, without compromising functionality and safety.

# 43lt ELECTRIC MANUAL BRATT PAN WITH STAINLESS STEEL BOTTOM

CODICE  
CR0989989

MODELLO  
D74/10KBEI

SERIE  
DIAMANTE 70

## Technical Information

SPECIFICATION	DATA
MATERIAL	CR0989989
DEFINITION	D74/10 KBEI BRASIERA EL.80 INOX
COMMERCIAL LINE	DIAMANTE
SUPPLY	ELECTRICS
DIM. WIDTH	800 mm
DIM. PRODUCTIVITY	730 mm
DIM. HEIGHT	870 mm
NET WEIGHT	108 Kg
VOLUME (net)	0,508
PACKAGE LENGTH	840 mm
PACKAGE WIDTH	850 mm
PACKAGING HEIGHT	1170 mm
PACKAGE VOLUME	0,836 m3
GROSS PACKING WEIGHT	121 Kg
STANDARD POWER SUPPLY	380-415V 3N
FREQUENCY	50-60 Hz
ELECTRICAL POWER	9,900 kW
IP GRADE	IPX4
CERTIFIED MODEL	D74/10 KBEI

# 43lt ELECTRIC MANUAL BRATT PAN WITH STAINLESS STEEL BOTTOM

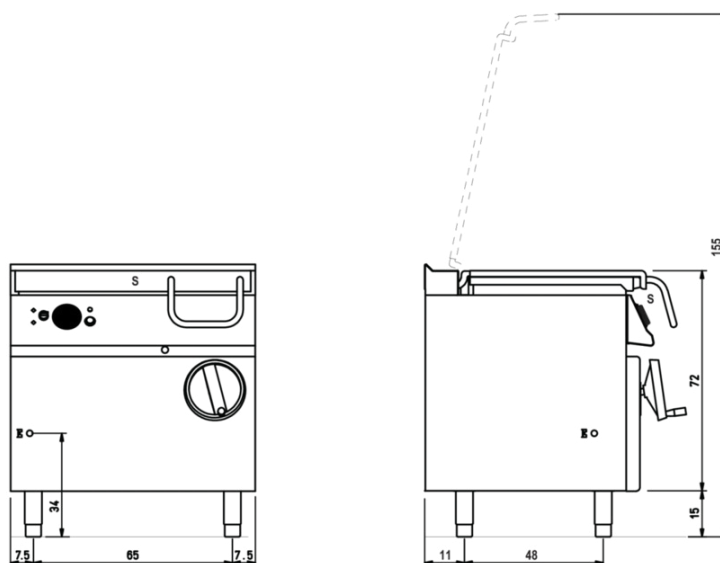
CODICE  
CR0989989

MODELLO  
D74/10KBEI

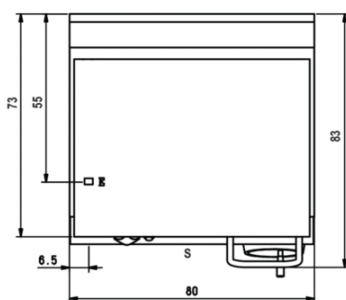
SERIE  
DIAMANTE 70

## SCHEMA DI INSTALLAZIONE - INSTALLATION DIAGRAM - INSTALLATIONSPLAN - SCHÉMA D'INSTALLATION - ESQUEMA DE INSTALACION - INSTALLATIESCHEMA - IINSTALLATIONSRTNINGAR

MISURE IN cm - DIMENSIONS IN cm - ABMESSUNGEN IN cm  
MESURES EN cm - MEDIDAS EN cm - MATEN IN cm



(D) 74/10 KBE ...



### Legenda - Legende - Key - Légende - Leyenda - Legenda

- E** Pressacavo entrata linea elettrica - Stopfbuchse - Electric cable stress relief  
Presse étoupe de câble él. - Pisacable - Elektrische kabelwartel
- S** Scarico vasca - Wannenabflussrohr - Pan outlet  
Vidange du bac - Descarga cuba - Water toevoer

# 43lt ELECTRIC MANUAL BRATT PAN WITH STAINLESS STEEL BOTTOM

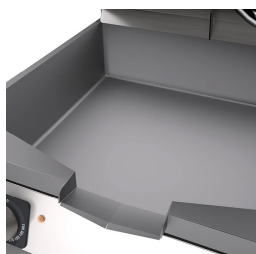
CODICE  
CR0989989

MODELLO  
D74/10KBEI

SERIE  
DIAMANTE 70



Self-balancing lids.



Large-radius tilting tank.



Equipment certified for low voltage  
directive 2014/35/EU according to the  
international CB scheme.



Thanks to the jet-proofing certification  
(IPX5) obtained through specific tests,  
knobs and under-knobs can be washed,  
without compromising functionality  
and safety.

## 43lt ELECTRIC MANUAL BRATT PAN WITH STAINLESS STEEL BOTTOM

CODICE  
CR0989989

MODELLO  
D74/10KBEI

SERIE  
DIAMANTE 70

### ACCESSORIES

CODE	MODELLO	DESCRIZIONE
CR0592799	ZF8	Front plinth - FOR INSTALLING EQUIPMENT WITH FLOOR HEIGHT 90 CM L=80
CR0592830	ZG	SKIRTING JOINT
MA97432000	R	WHEEL KIT (2 + 2) Ø 100
MA97433000	RI	WHEEL KIT (2 + 2) Ø 101 STAINLESS STEEL
CR0592869	PZM	NO. 4 STAINLESS STEEL FEET FOR INSTALLATION ON CONCRETE PLINTH
CR0593580	9PT	No. 4 stainless steel feet for installation on tops
CR0592879	KPA	N.2 STAINLESS STEEL FEET WITH FLANGE
CMF0708	CMF0708	Handrail L=80
CR0599649	7ZL	Side plinth