

# EVO ELECTRIC FRYER 1 TANK 22lt - with basket lifting system + oil filtering

CODICE  
CR1209859

MODELLO  
D9222/10FREEVFA

SERIE  
DIAMANTE 90



## GENERAL CHARACTERISTICS

In addition to offering the maximum choice of solutions and 2 mm thick and 90 cm deep tops, this series has all the power, robustness and functionality you need to work efficiently. External coatings and feet in stainless steel with Scotch Brite finish. Working table height adjustable from 840 to 900 mm. Range modularity: 200-400-600-800-1200 Wide range of accessories.

# EVO ELECTRIC FRYER 1 TANK 22lt - with basket lifting system + oil filtering

CODICE  
CR1209859

MODELLO  
D9222/10FREEVFA

SERIE  
DIAMANTE 90

## TECHNICAL SPECIFICATIONS

■ Electronically controlled fryer with high productivity. ■ Top made of 20/10 thick AISI304 stainless steel. ■ AISI 18/10 stainless steel moulded tubs with radial internal profile. ■ Equipped with a large front reservoir for oil and foam expansion. ■ Large cold zone for collecting cooking residues ensures the integrity of the oil used for longer. ■ Safety thermostat (230°C) against excessive oil temperatures. ■ Heating with power modulation (variable power delivery according to temperature and timing). ■ This special technology makes it possible to increase efficiency and optimise consumption at the same time. ■ Control panel with high-resolution 7" touch screen display (TPC) with electronic control board for managing the cooking temperature from 0 to 185°C with  $\pm 1^\circ\text{C}$  accuracy of the frying programmes, HACCP alarms, tank cleaning cycle, preheating and holding function at 100 °C. ■ Up to 30 frying programmes can be managed: adjustment of times, temperatures, holding times, representative images. ■ Easy recall of recipes via image menus. ■ Recipes can be uploaded via USB key to make parameters shareable across multiple fryers, making it easy to

achieve a standard of frying even in different environments. ■ A special software recognises frying programmes that by their characteristics can be made ■ Oil utilisation control software (OLC) ■ Safety thermostat (230°C) against excessive oil temperatures. ■ Heating by stainless steel burners with optimised flame, positioned outside the tank. ■ Automatic ignition of main burners via electronic flame controller, without pilot burner.

■ In the electric version, the heating element can be rotated by more than 90°. ■ Moulded inner basin for easy cleaning. ■ Control panel with high-resolution 7" touch screen display, simple and intuitive. ■ Equipment certified for low voltage directive 2014/35/EU according to the international CB scheme. ■ Thanks to the jet-proofing certification (IPX5) obtained through specific tests, knobs and under-knobs can be washed, without compromising functionality and safety.

# EVO ELECTRIC FRYER 1 TANK 22lt - with basket lifting system + oil filtering

CODICE  
CR1209859

MODELLO  
D9222/10FREEVFA

SERIE  
DIAMANTE 90

## Technical Information

SPECIFICATION	DATA
MATERIAL	CR1209859
DEFINITION	D9222/10FREEVFA FRIGGITRICE ELE 900 M40
COMMERCIAL LINE	DIAMANTE
SUPPLY	ELECTRICS
DIM. WIDTH	400 mm
DIM. PRODUCTIVITY	900 mm
DIM. HEIGHT	870 mm
NET WEIGHT	82 Kg
VOLUME (net)	0,313
PACKAGE LENGTH	440 mm
PACKAGE WIDTH	1020 mm
PACKAGING HEIGHT	1160 mm
PACKAGE VOLUME	0,522 m3
GROSS PACKING WEIGHT	92 Kg
STANDARD POWER SUPPLY	380-415V 3N
FREQUENCY	50-60 Hz
ELECTRICAL POWER	22,000 kW
IP GRADE	IPX5
CERTIFIED MODEL	D9222/10FREEVFA

EVO ELECTRIC FRYER 1 TANK 22lt - with basket  
lifting system + oil filtering

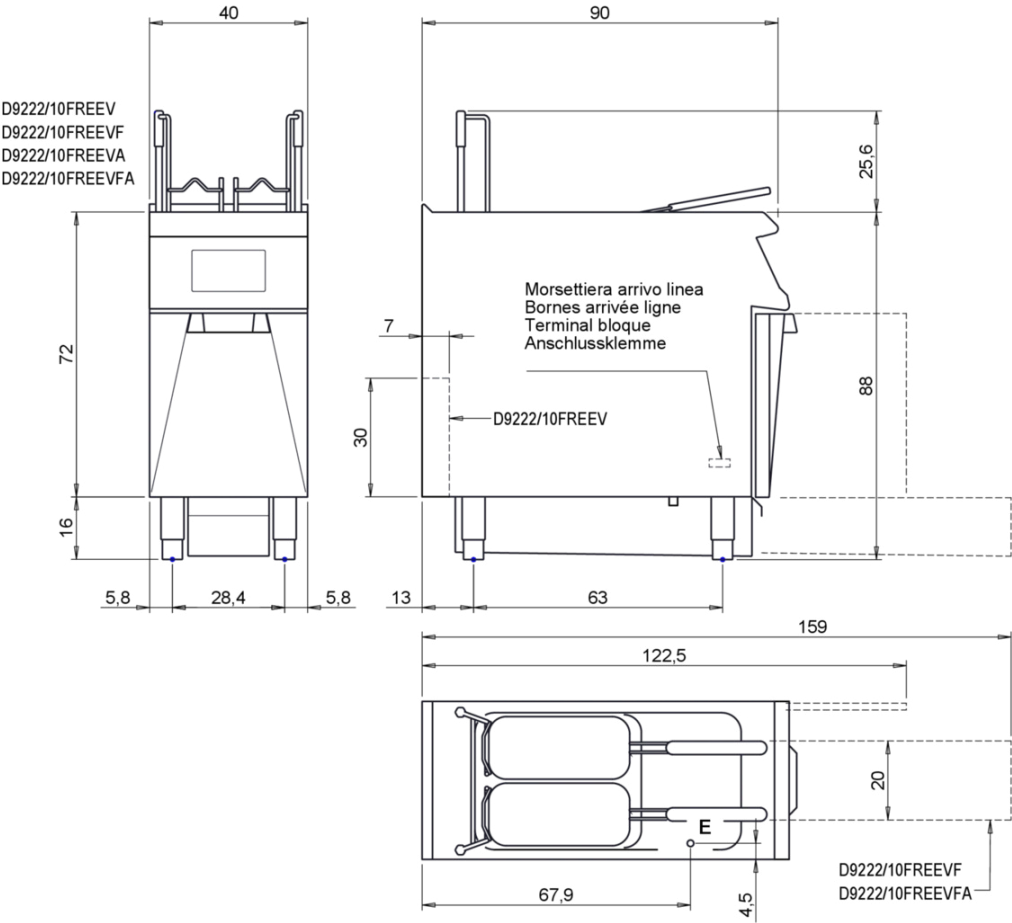
CODICE  
CR1209859

MODELLO  
D9222/10FREEVFA

SERIE  
DIAMANTE 90

SCHEMA DI INSTALLAZIONE - INSTALLATION DIAGRAM - INSTALLATIONSPLAN - SCHÉMA D'INSTALLATION -  
ESQUEMA DE INSTALACION - INSTALLATIESCHEMA - IINSTALLATIONSRIITNINGAR

MISURE IN cm - DIMENSIONS IN cm - ABMESSUNGEN IN cm - MESURES EN cm  
MEDIDAS EN cm - MATEN IN cm - DIMENSIONES EN cm



Legenda - Legende - Key - Légende - Leyenda - Legenda - Legenda	
<b>E</b> Pressacavo entrata linea elettrica - Stopfbuchse - Electric cable stress relief - Presse étoupe de câble él - Pisacable - Elektrische kabelwartel - Entrada cabo eléctrico	<b>G</b> Arrivo gas - Gasanschluss - Gas connection - Arrivée gaz - Union de gas - Gasaansluiting - Ligação gás
<b>S</b> Attacco scarico acqua - Wasserablauf - Water outlet - Vidange de l'eau - Desaguadero - Wateraftapaansluiting - Junção descarga água	<b>H20</b> Arrivo acqua - Wasseranschluss - Water inlet - Arrivée eau - Union de agua - Wateraansluiting - Junção alimentação água
<b>S1</b> Scarico vasca - Wannenabflussrohr - Pan outlet - Vidange du bac - Descarga cuba - Water toevoer - Descarga da cuba	<b>A1 =</b> Calda - Heiss - Warm - Chaude - Caliente - Warm - Morno <b>A2 =</b> Fredda - Kalt - Cold - Froid - Fria - Koude - Frio
<b>S2</b> Valvola di depressione - Anti-depression valve - Unterdruck ventil - Soupape de dépression - Válvula de depresión - Onderdrukklep - Válvula de depressão	
<b>S3</b> Scarico acqua intercapedine - Wasserablauf Zwischenraum - Jacket water drain Evacuation eau double envelope - Descarga de agua intersticios - Afvoer water tussenruimte - Descarga de água na marmitta com Sistema de aquecimento indirecto	
<b>S4</b> Scarico - Abflussrohr - Drain - Tuyau d'évacuation - Tubo de drenaje - Aftapbuis - Tubulação de dreno	<b>L</b> Rubinetto di livello - Level tap - Wasserhahn - Robinet de niveau - Grifo de nivel - Niveaakraan - Torneira de nível

# EVO ELECTRIC FRYER 1 TANK 22lt - with basket lifting system + oil filtering

CODICE  
CR1209859

MODELLO  
D9222/10FREEVFA

SERIE  
DIAMANTE 90



In the electric version, the heating element can be rotated by more than 90°.



Moulded inner basin for easy cleaning.



Control panel with high-resolution 7" touch screen display, simple and intuitive.



Equipment certified for low voltage directive 2014/35/EU according to the international CB scheme.

# EVO ELECTRIC FRYER 1 TANK 22lt - with basket lifting system + oil filtering

CODICE  
CR1209859

MODELLO  
D9222/10FREEVFA

SERIE  
DIAMANTE 90

## ACCESSORIES

CODE	MODELLO	DESCRIZIONE
9FFE22	CR1652579	TANK BOTTOM FILTER FOR ELECTRIC FRYERS 22 LT
CR0989909	CR0989909	BASKET GN 1/2
CR0592130	CR0592130	BASKET GN 1/1
CR0999999	D9KRS23HF	Tank filling and emptying kit for versions with automatic filtering
CR0592779	ZF4	Front plinth - FOR INSTALLING EQUIPMENT WITH FLOOR HEIGHT 90 CM L=40
CR0592830	ZG	SKIRTING JOINT
CR0592820	9ZL	Side plinth
MA97432000	R	WHEEL KIT (2 + 2) Ø 100
MA97433000	RI	WHEEL KIT (2 + 2) Ø 101 STAINLESS STEEL
CR0592869	PZM	NO. 4 STAINLESS STEEL FEET FOR INSTALLATION ON CONCRETE PLINTH
CR0593580	9PT	No. 4 stainless steel feet for installation on tops
CR0592879	KPA	N.2 STAINLESS STEEL FEET WITH FLANGE