

EVO GAS FRYER 1 BOTTLE 23 LT - With oil filtering

CODICE
CR1209879

MODELLO
D9223/10FRGEVF

SERIE
DIAMANTE 90



GENERAL CHARACTERISTICS

In addition to offering the maximum choice of solutions and 2 mm thick and 90 cm deep tops, this series has all the power, robustness and functionality you need to work efficiently. External coatings and feet in stainless steel with Scotch Brite finish. Working table height adjustable from 840 to 900 mm. Range modularity: 200-400-600-800-1200 Wide range of accessories.

EVO GAS FRYER 1 BOTTLE 23 LT - With oil filtering

CODICE
CR1209879

MODELLO
D9223/10FRGEVF

SERIE
DIAMANTE 90

TECHNICAL SPECIFICATIONS

■ Electronically controlled fryer with high productivity. ■ Top made of 20/10 thick AISI304 stainless steel. ■ AISI 18/10 stainless steel moulded tubs with radial internal profile. ■ Equipped with a large front reservoir for oil and foam expansion. ■ Large cold zone for collecting cooking residues ensures the integrity of the oil used for longer. ■ Safety thermostat (230°C) against excessive oil temperatures. ■ Heating with power modulation (variable power delivery according to temperature and timing). ■ This special technology makes it possible to increase efficiency and optimise consumption at the same time. ■ Control panel with high-resolution 7" touch screen display (TPC) with electronic control board for managing the cooking temperature from 0 to 185°C with $\pm 1^\circ\text{C}$ accuracy of the frying programmes, HACCP alarms, tank cleaning cycle, preheating and holding function at 100 °C. ■ Up to 30 frying programmes can be managed: adjustment of times, temperatures, holding times, representative images. ■ Easy recall of recipes via image menus. ■ Recipes can be uploaded via USB key to

make parameters shareable across multiple fryers, making it easy to achieve a standard of frying even in different environments. ■ A special software recognises frying programmes that by their characteristics can be made ■ Oil utilisation control software (OLC) ■ Safety thermostat (230°C) against excessive oil temperatures. ■ Heating by stainless steel burners with optimised flame, positioned outside the tank. ■ Automatic ignition of main burners via electronic flame controller, without pilot burner.

■ Automated basket lift. By programming recipes from the touch screen panel, the basket lifts automatically at the end of the set time. ■ Control panel with high-resolution 7" touch screen display, simple and intuitive. ■ Thanks to the jet-proofing certification (IPX5) obtained through specific tests, knobs and under-knobs can be washed, without compromising functionality and safety.

EVO GAS FRYER 1 BOTTLE 23 LT - With oil filtering

CODICE
CR1209879

MODELLO
D9223/10FRGEVF

SERIE
DIAMANTE 90

Technical Information

SPECIFICATION	DATA
MATERIAL	CR1209879
DEFINITION	D9223/10FRGEVF FRIGGITRICE GAS 900 M40
COMMERCIAL LINE	DIAMANTE
SUPPLY	MIXED
DIM. WIDTH	400 mm
DIM. PRODUCTIVITY	900 mm
DIM. HEIGHT	870 mm
NET WEIGHT	90 Kg
VOLUME (net)	0,313
PACKAGE LENGTH	1020 mm
PACKAGE WIDTH	440 mm
PACKAGING HEIGHT	1410 mm
PACKAGE VOLUME	0,633 m3
GROSS PACKING WEIGHT	104.4 Kg
STANDARD POWER SUPPLY	220-240V 1N
FREQUENCY	50 Hz
ELECTRICAL POWER	0,100 kW
GAS POWER	25,00
GAS POWER (G25.3/25mbar)	25,00
IP GRADE	IPX5
CERTIFIED MODEL	D9223/10FRGEVF
Capacity	22 litri

EVO GAS FRYER 1 BOTTLE 23 LT - With oil filtering

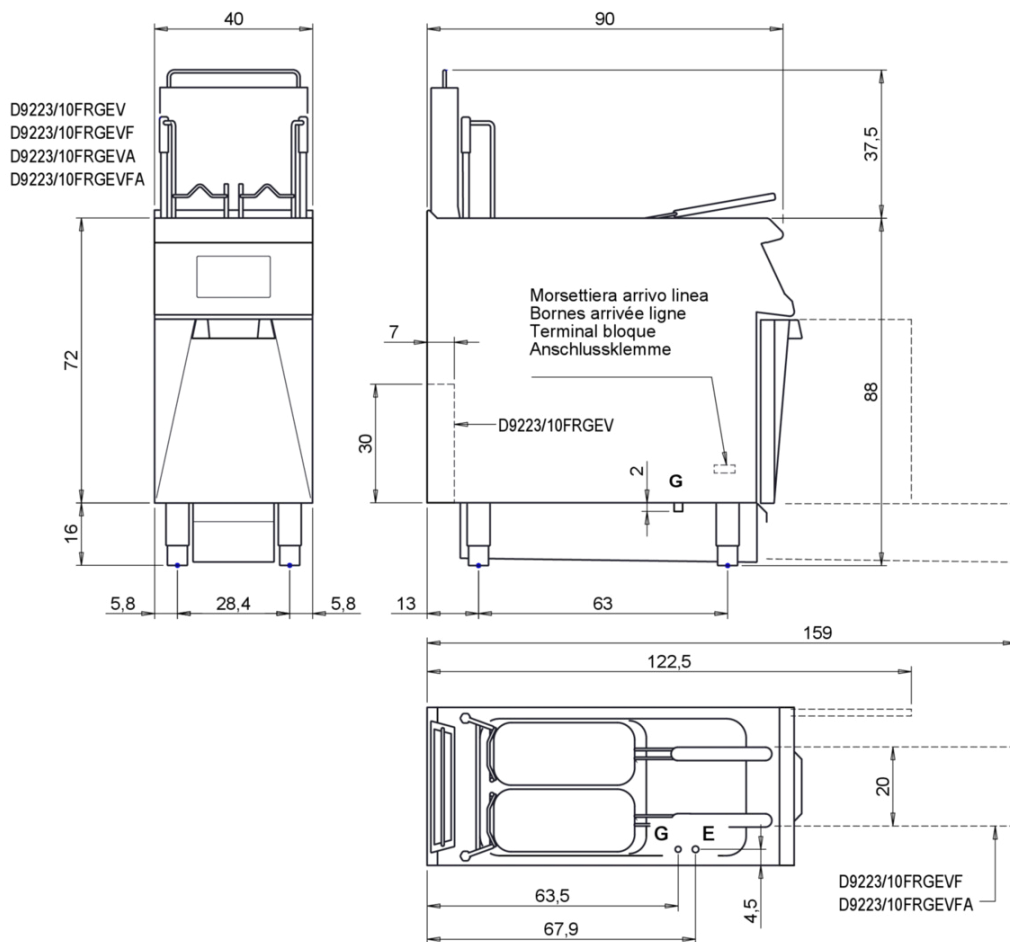
CODICE
CR1209879

MODELLO
D9223/10FRGEVF

SERIE
DIAMANTE 90

SCHEMA DI INSTALLAZIONE - INSTALLATION DIAGRAM - INSTALLATIONSPLAN - SCHÉMA D'INSTALLATION - ESQUEMA DE INSTALACION - INSTALLATIESCHEMA - IINSTALLATIONSRIJNINGAR

MISURE IN cm - DIMENSIONS IN cm - ABMESSUNGEN IN cm - MESURES EN cm
MEDIDAS EN cm - MATEN IN cm - DIMENSIONES EN cm



Legenda - Legende - Key - Légende - Leyenda - Legenda - Legenda

E	Pressacavo entrata linea elettrica - Stopfbuchse - Electric cable stress relief - Presse étoupe de câble él - Pisacable - Elektrische kabelwartel - Entrada cabo eléctrico	G	Arrivo gas - Gasanschluss - Gas connection - Arrivée gaz - Union de gas - Gasaansluiting - Ligação gás EN 10226-1 R 1/2 ; EN ISO 228-1 G 1/2 (DK)
S	Attacco scarico acqua - Wasserablauf - Water outlet - Vidange de l'eau - Desaguadero - Wateraftapaansluiting - Junção descarga água	H20	Arrivo acqua - Wasseranschluss - Water inlet - Arrivée eau - Union de agua - Wateraansluiting - Junção alimentação água
S1	Scarico vasca - Wannenabflussrohr - Pan outlet - Vidange du bac - Descarga cuba - Water toevoer - Descarga da cuba	A1 =	Calda - Heiss - Warm - Chaude - Caliente - Warm - Morno
S2	Valvola di depressione - Anti-depression valve - Unterdruck ventil - Soupape de dépression - Válvula de depresión - Onderdruk klep - Válvula de depressão	A2 =	Fredda - Kalt - Cold - Froid - Fria - Koude - Frio
S3	Scarico acqua intercapedine - Wasserablauf Zwischenraum - Jacket water drain Evacuation eau double envelope - Descarga de agua intersticios - Afvoer water tussenruimte - Descarga de água na marmitta com Sistema de aquecimento indirecto		
S4	Scarico - Abflussrohr - Drain - Tuyau d'évacuation - Tubo de drenaje - Aftapbuis - Tubulação de dreno	L	Rubinetto di livello - Level tap - Wasserhahn - Robinet de niveau - Grifo de nivel - Niveaakraan - Torneira de nível

EVO GAS FRYER 1 BOTTLE 23 LT - With oil filtering

CODICE
CR1209879

MODELLO
D9223/10FRGEVF

SERIE
DIAMANTE 90



Automated basket lift. By programming recipes from the touch screen panel, the basket lifts automatically at the end of the set time.



Control panel with high-resolution 7" touch screen display, simple and intuitive.

EVO GAS FRYER 1 BOTTLE 23 LT - With oil filtering

CODICE
CR1209879

MODELLO
D9223/10FRGEVF

SERIE
DIAMANTE 90

ACCESSORIES

CODE	MODELLO	DESCRIZIONE
CR1652569	9FFG23	TANK BOTTOM FILTER FOR GAS FRYERS 23 LT
CR0989909	CR0989909	BASKET GN 1/2
CR0592130	CR0592130	BASKET GN 1/1
CR0999999	D9KRS23HF	Tank filling and emptying kit for versions with automatic filtering
CR0592779	ZF4	Front plinth - FOR INSTALLING EQUIPMENT WITH FLOOR HEIGHT 90 CM L=40
CR0592830	ZG	SKIRTING JOINT
CR0592820	9ZL	Side plinth
MA97432000	R	WHEEL KIT (2 + 2) Ø 100
MA97433000	RI	WHEEL KIT (2 + 2) Ø 101 STAINLESS STEEL
CR0592869	PZM	NO. 4 STAINLESS STEEL FEET FOR INSTALLATION ON CONCRETE PLINTH
CR0593580	9PT	No. 4 stainless steel feet for installation on tops
CR0592879	KPA	N.2 STAINLESS STEEL FEET WITH FLANGE