

6-BURNER GAS COOKER ON MAXI OVEN GAS

CODICE
CR0995189

MODELLO
D96/10CGFL

SERIE
DIAMANTE 90



GENERAL CHARACTERISTICS

In addition to offering the maximum choice of solutions and 2 mm thick and 90 cm deep tops, this series has all the power, robustness and functionality you need to work efficiently. External coatings and feet in stainless steel with Scotch Brite finish. Working table height adjustable from 840 to 900 mm. Range modularity: 200-400-600-800-1200 Wide range of accessories.

TECHNICAL SPECIFICATIONS

- Upper burners with stabilised flame, made of nickel-plated cast iron.
- Thermocouple safety valves with pilot flame.
- Black acid-resistant enamelled cast iron grids with long spokes for holding small pans.
- AISI304 stainless steel drip trays.
- Thanks to the jet-proofing certification (IPX5) obtained through specific tests, knobs and under-knobs can be washed, without compromising functionality and safety.
- Nickel-plated cast-iron stabilised flame burners with double-crown spreader (improved performance facilitated by a flame distributed over two different sectors), Grid with long spokes to facilitate holding small pots and pans

- 90° venturi that prevents the nozzle from clogging and accumulating dirt.
- Nickel-plated cast-iron stabilised flame burners with double-crown spreader (improved performance facilitated by a flame distributed over two different sectors), Grid with long spokes to facilitate holding small pots and pans
- Removable AISI 304 stainless steel bowl for maximum hygiene.
- For gas ovens, radiant plate in cast iron for even heat distribution
- even heat distribution, stainless steel for electric ovens. Insulated stainless steel door and inner door mounted on high-strength hinges.
- Thanks to the jet-proofing certification (IPX5) obtained through specific tests, knobs and under-knobs can be washed, without compromising functionality and safety.

6-BURNER GAS COOKER ON MAXI OVEN GAS

CODICE
CR0995189

MODELLO
D96/10CGFL

SERIE
DIAMANTE 90

Technical Information

| SPECIFICATION | DATA |
|--------------------------|-----------------------------------|
| MATERIAL | CR0995189 |
| DEFINITION | D96/10 CGFL 6 FUOCHI FORNO G.MAXI |
| COMMERCIAL LINE | DIAMANTE |
| SUPPLY | GAS |
| DIM. WIDTH | 1200 mm |
| DIM. PRODUCTIVITY | 900 mm |
| DIM. HEIGHT | 870 mm |
| NET WEIGHT | 219 Kg |
| VOLUME (net) | 0.94 |
| PACKAGE LENGTH | 1260 mm |
| PACKAGE WIDTH | 1020 mm |
| PACKAGING HEIGHT | 1150 mm |
| PACKAGE VOLUME | 1,478 m3 |
| GROSS PACKING WEIGHT | 230 Kg |
| GAS POWER | 44,20 |
| GAS POWER (G25.3/25mbar) | 39,40 |
| GAS/REFRIGERANT TYPE | GPL 28-30/37 mbar |
| N. FIRES/PLATES | SEI FUOCHI |
| CERTIFIED MODEL | D96/10 CGFL |

6-BURNER GAS COOKER ON MAXI OVEN GAS

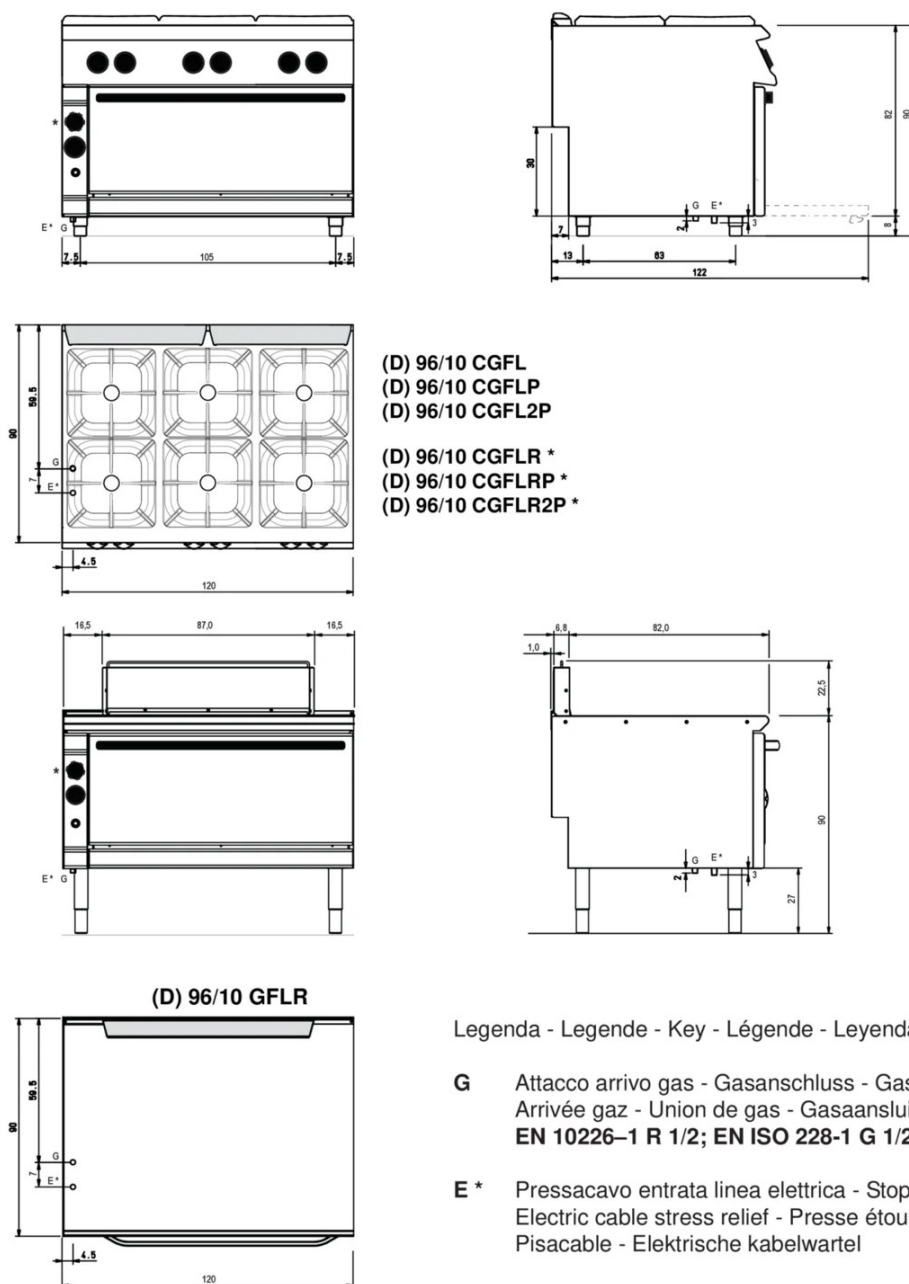
CODICE
CR0995189

MODELLO
D96/10CGFL

SERIE
DIAMANTE 90

SCHEMA DI INSTALLAZIONE - INSTALLATION DIAGRAM - INSTALLATIONSPLAN - SCHÉMA D'INSTALLATION - ESQUEMA DE INSTALACION - INSTALLATIESCHEMA - IINSTALLATIONSRTNINGAR

MISURE IN cm - DIMENSIONS IN cm - ABMESSUNGEN IN cm
MESURES EN cm - MEDIDAS EN cm - MATEN IN cm

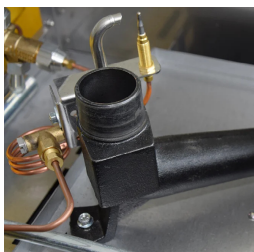


6-BURNER GAS COOKER ON MAXI OVEN GAS

CODICE
CR0995189

MODELLO
D96/10CGFL

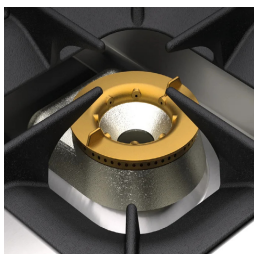
SERIE
DIAMANTE 90



90° venturi that prevents the nozzle from clogging and accumulating dirt.



Thanks to the jet-proofing certification (IPX5) obtained through specific tests, knobs and under-knobs can be washed, without compromising functionality and safety.



Nickel-plated cast-iron stabilised flame burners with double-crown spreader (improved performance facilitated by a flame distributed over two different sectors), Grid with long spokes to facilitate holding small pots and pans



Removable AISI 304 stainless steel bowl for maximum hygiene.



For gas ovens, radiant plate in cast iron for even heat distribution even heat distribution, stainless steel for electric ovens. Insulated stainless steel door and inner door mounted on high-strength hinges.

6-BURNER GAS COOKER ON MAXI OVEN GAS

CODICE
CR0995189

MODELLO
D96/10CGFL

SERIE
DIAMANTE 90

ACCESSORIES

| CODE | MODELLO | DESCRIZIONE |
|------------|-----------|---|
| SUPBRUC | SUPBRUC | Supplement for burner 10 kw 10 (Kcal 8598.45) |
| MA97365000 | GGN1/1 | CHROME GRILLE GN1/1 |
| MA97375000 | GGN2/1 | CHROME GRILLE GN2/1 |
| MA97377000 | BF9M-X | Chrome-plated steel grill for oven 93x62 cm MAXI |
| MA97376900 | TGN2/1 | AISI 304 stainless steel tray for oven 53x65x1 cm GN 2/1 |
| MA97378000 | BF9M-T | AISI 304 stainless steel baking tray for oven 93x62x1,5 cm MAXI |
| CR1353839 | CR1353839 | Smooth cast iron radiant plate 39.4x34.8 cm |
| CR1353849 | CR1353849 | Striped radiant plate 39.6x34.8 cm |