

FRY TOP Electric M120 Stainless Steel Plate - Smooth - Top Version

CODICE
CR1139129

MODELLO
DT96/10TFTE

SERIE
DIAMANTE 90 TOUCH



GENERAL CHARACTERISTICS

Diamond 90 Touch - Everything under control Everything is under control, perfect results every time. Thanks to the practical display, parameter selection is quick and precise. Easy and clear temperature management, and special functions are always visible and accessible from the display. Tradition and innovation, everything on your worktop A new non-slip square and rounded knob design for a more ergonomic grip and an embossed indicator that makes it easier to select the datum to be set. And with the exclusive Encoder Functionality, simply touch the parameter you want, turn the knob to adjust the level and press it to start the set datum. With water- and dirt-proof crown. Quick and precise parameter selection. Easy and clear temperature management. Special functions always visible and accessible from the display. Stainless steel outer shells and feet. Height from the work surface adjustable from 840 to 900mm. Tops with 2 mm thickness

TECHNICAL SPECIFICATIONS

■ Possibility of setting 2 timers to control cooking. An acoustic signal warns the operator at the end of the set time. ■ Plate with armoured incoloy heating elements placed under the bottom for cooking with temperature uniformity. ■ Predisposition for core probe, for even greater cooking control. Reaching the set core temperature is signalled by an acoustic signal ■ Plate welded to the hob for a larger cooking zone. ■ Temperature control via touch screen and

adjustment with ergonomic knob ■ industry 4.0 ready version. ■ Everything is under control, perfect results every time. Thanks to the practical display, parameter selection is quick and precise. Easy and clear temperature management, and special functions are always visible and accessible from the display. ■ Thanks to the jet-proofing certification (IPX5) obtained through specific tests, knobs and under-knobs can be washed, without compromising functionality and safety.

FRY TOP Electric M120 Stainless Steel Plate - Smooth - Top Version

CODICE
CR1139129

MODELLO
DT96/10TFTE

SERIE
DIAMANTE 90 TOUCH

Technical Information

| SPECIFICATION | DATA |
|-----------------------|--|
| MATERIAL | CR1139129 |
| DEFINITION | DT96/10 TFTE FRY TOP LT M120 TOP ELETTR. |
| COMMERCIAL LINE | DIAMANTE TOUCH |
| SUPPLY | ELECTRICS |
| DIM. WIDTH | 1200 mm |
| DIM. PRODUCTIVITY | 900 mm |
| DIM. HEIGHT | 250 mm |
| NET WEIGHT | 115 Kg |
| PACKAGE LENGTH | 440 mm |
| PACKAGE WIDTH | 980 mm |
| PACKAGING HEIGHT | 500 mm |
| PACKAGE VOLUME | 0,540 m3 |
| GROSS PACKING WEIGHT | 130 Kg |
| STANDARD POWER SUPPLY | 380-415V 3N |
| FREQUENCY | 50-60 Hz |
| ELECTRICAL POWER | 22,500 kW |
| IP GRADE | IPX5 |
| CERTIFIED MODEL | DT96/10 TFTE |

FRY TOP Electric M120 Stainless Steel Plate - Smooth - Top Version

CODICE
CR1139129

MODELLO
DT96/10TFTE

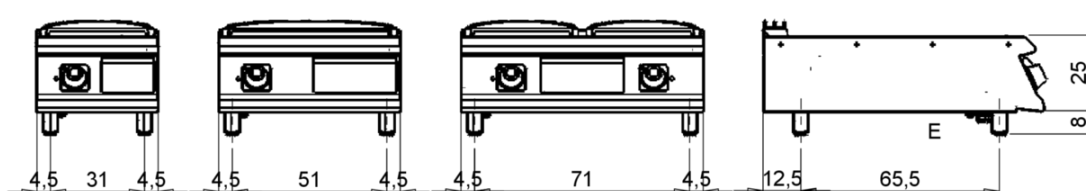
SERIE
DIAMANTE 90 TOUCH

MISURE IN cm - DIMENSIONS IN cm - ABMESSUNGEN IN cm- MESURES EN cm
MEDIDAS EN cm - MATEN IN cm - DIMENSIONES EN cm

D92/10STFTE..

D93/10STFTE..

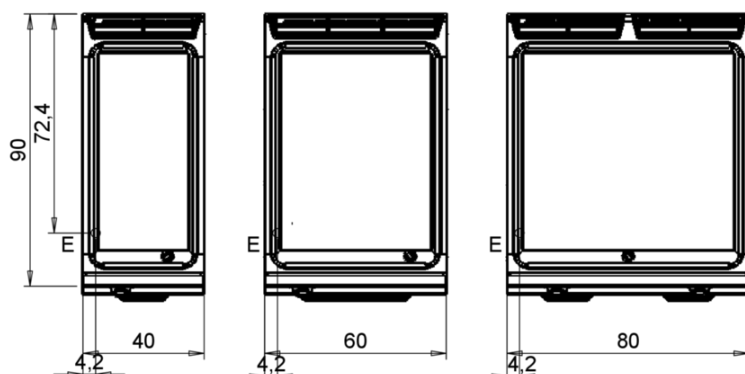
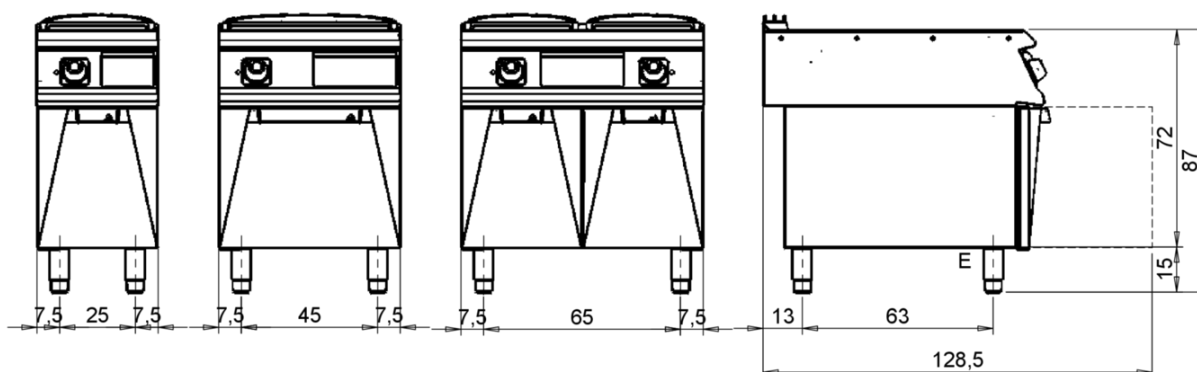
D94/10STFTE..



D92/10SFTE..

D93/10SFTE..

D94/10SFTE..



Legenda - Legende - Key - Légende - Leyenda - Legenda - Legenda

| | |
|---|---|
| E Pressacavo entrata linea elettrica - Stopfbuchse - Electric cable stress relief - Presse étoupe de câble él - Pisacable - Elektrische kabelwartel - Entrada cabo eléctrico | G Arrivo gas - Gasanschluss - Gas connection - Arrivée gaz - Union de gas - Gasaansluiting - Ligação gás |
| S Attacco scarico acqua - Wasserablauf - Water outlet - Vidange de l'eau - Desaguadero - Wateraftapaansluiting - Junção descarga água | H20 Arrivo acqua - Wasseranschluss - Water inlet - Arrivée eau - Union de água - Wateraansluiting - Junção alimentação água |
| S1 Scarico vasca - Wannenabflussrohr - Pan outlet - Vidange du bac - Descarga cuba - Water toevoer - Descarga da cuba | A1 = Calda - Heiss - Warm - Chaude - Caliente - Warm - Morno A2 = Fredda - Kalt - Cold - Froid - Fria - Koude - Frio |
| S2 Valvola di depressione - Anti-depression valve - Unterdruck ventil - Soupape de dépression - Válvula de depresión - Onderdrukklep - Válvula de depressão | |
| S3 Scarico acqua intercapedine - Wasserablauf Zwischenraum - Jacket water drain Evacuation eau double envelope - Descarga de agua intersticios - Afvoer water tussenruimte - Descarga de água na marmitta com Sistema de aquecimento indirecto | |
| S4 Scarico - Abflussrohr - Drain - Tuyau d'évacuation - Tubo de drenaje - Aftapbuis - Tubulação de dreno | L Rubinetto di livello - Level tap - Wasserhahn - Robinet de niveau - Grifo de nivel - Niveaукraan - Torneira de nível |

FRY TOP Electric M120 Stainless Steel Plate - Smooth - Top Version

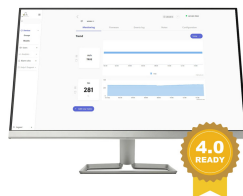
CODICE
CR1139129

MODELLO
DT96/10TFTE

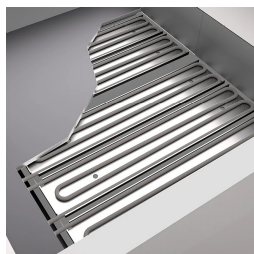
SERIE
DIAMANTE 90 TOUCH



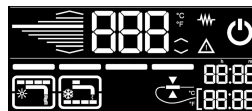
Possibility of setting 2 timers to control cooking. An acoustic signal warns the operator at the end of the set time.



Temperature control via touch screen and adjustment with ergonomic knob



Predisposition for core probe, for even greater cooking control. Reaching the set core temperature is signalled by an acoustic signal



Everything is under control, perfect results every time. Thanks to the practical display, parameter selection is quick and precise. Easy and clear temperature management, and special functions are always visible and accessible from the display.



Plate welded to the hob for a larger cooking zone.



Thanks to the jet-proofing certification (IPX5) obtained through specific tests, knobs and under-knobs can be washed, without compromising functionality and safety.



Temperature control via touch screen and adjustment with ergonomic knob

FRY TOP Electric M120 Stainless Steel Plate - Smooth - Top Version

CODICE
CR1139129

MODELLO
DT96/10TFTE

SERIE
DIAMANTE 90 TOUCH

ACCESSORIES

| CODE | MODELLO | DESCRIZIONE |
|-----------|----------|--|
| CR0957610 | 90XFTP12 | SPLASH GUARD FOR FRY TOP MODULE 120 |
| CR0592079 | NXFTC4 | Fry top cleaning drawer M40-M120 |
| CR0592089 | NXFTC6/8 | Fry top cleaning drawer M40-M60-M80-M120 |
| CR0592060 | NXFTT | PLANCHA CLEANING PLUG |
| CR1356399 | RPR | Striped chrome plate scraper |
| CR1354989 | PRPC | Smooth plate cleaning scraper - chrome-plated |
| CR1354999 | PKLR | Replacement blades (10PCS) |
| CR0996979 | DBVP4 | Diamond door 39.5x3.6x46.5 cm for 40 cm compartments |
| CR0997009 | DBVPA4 | Accessory Diamond door 39.5x3.6x46.5 cm for 40 cm compartments |
| CR0997029 | DAPC | Accessories for accessory diamond knife holder |
| CR0997019 | DAPD | Accessories for Diamond door accessories |
| CR0997039 | DAPS | Accessories for diamond spice rack |
| CR0997049 | DAPM | Accessories for accessory Diamond door |
| CR0997059 | DAPDB | Accessories for accessory Diamond door/bottle holders |
| CR1353589 | DBVC4 | Drawer kit 39.5x56x46.5 cm for compartments of 40 |