

ROLL-IN STORAGE CABINET COMPACT

MONOSCOCK 1 DOOR - TEMP. +2/+10°C

CODICE
RITN-COMPACT

MODELLO
RITN-COMPACT

SERIE
REFRIGERATED
CABINETS



GENERAL CHARACTERISTICS

The main advantage of good refrigeration is to store food safely and hygienically, reducing the risk of contamination and spoilage. With their stainless steel capacity and structure, the refrigeration equipment ensures optimal preservation of vegetables, meat, fish, ice cream and creams, while maintaining their flavour and fragrance. Compliance with hygiene and food safety standards, reduced energy costs and increased efficiency in kitchen work are aspects that guided OLIS in the development of a new range of refrigeration equipment.

One-piece construction with AISI304 stainless steel interior and exterior finish. Dashboard openable for easy periodic maintenance (condenser cleaning). Inner compartment moulded sides, 3 Rilsan GN2/1 grids included. External back and sternum base in pre-painted steel. Magnetic gasket on all four sides and counter-magnet on the gasket rebates. Ergonomic full-height handle recessed into the front of the door for easy opening in any type of installation. Indirect ventilation thanks to the full-height ducting system for optimal air circulation and uniform temperature distribution. Environmentally friendly refrigerant R290

TECHNICAL SPECIFICATIONS

- Monocoque construction in AISI304 Scotch-Brite satin stainless steel
- Insulation in CFC and HCFC-free PU, thickness 80 mm (70mm version COMPACT)
- Automatic defrosting and evaporation of condensed water
- Full-height ergonomic handles and magnetic seals on 3 sides
- Internal bumper on all sides

- Monocoque construction in AISI304 Scotch-Brite satin stainless steel.

Capacity of the wheeled containers: GN 2/1 or EN 400x600 mm or 600x800 mm.

Finely SCOTCH-BRITE satined exterior PU, CFC and HCFC free insulation, thickness 70 mm.

Automatic defrosting and evaporation of condensed water.

Large capacity cell allows the introduction of trolleys with maximum dimensions: 660x800x1860 mm.

Full-height ergonomic handles and magnetic seals on 3 sides.

40mm Insulated floor in AISI 304 Stainless steel for the BT version.

Internal bumper on all sides.

Touch display.

ROLL-IN STORAGE CABINET COMPACT

MONOSCOCK 1 DOOR - TEMP. +2/+10°C

CODICE
RITN-COMPACT

MODELLO
RITN-COMPACT

SERIE
REFRIGERATED
CABINETS

Technical Information

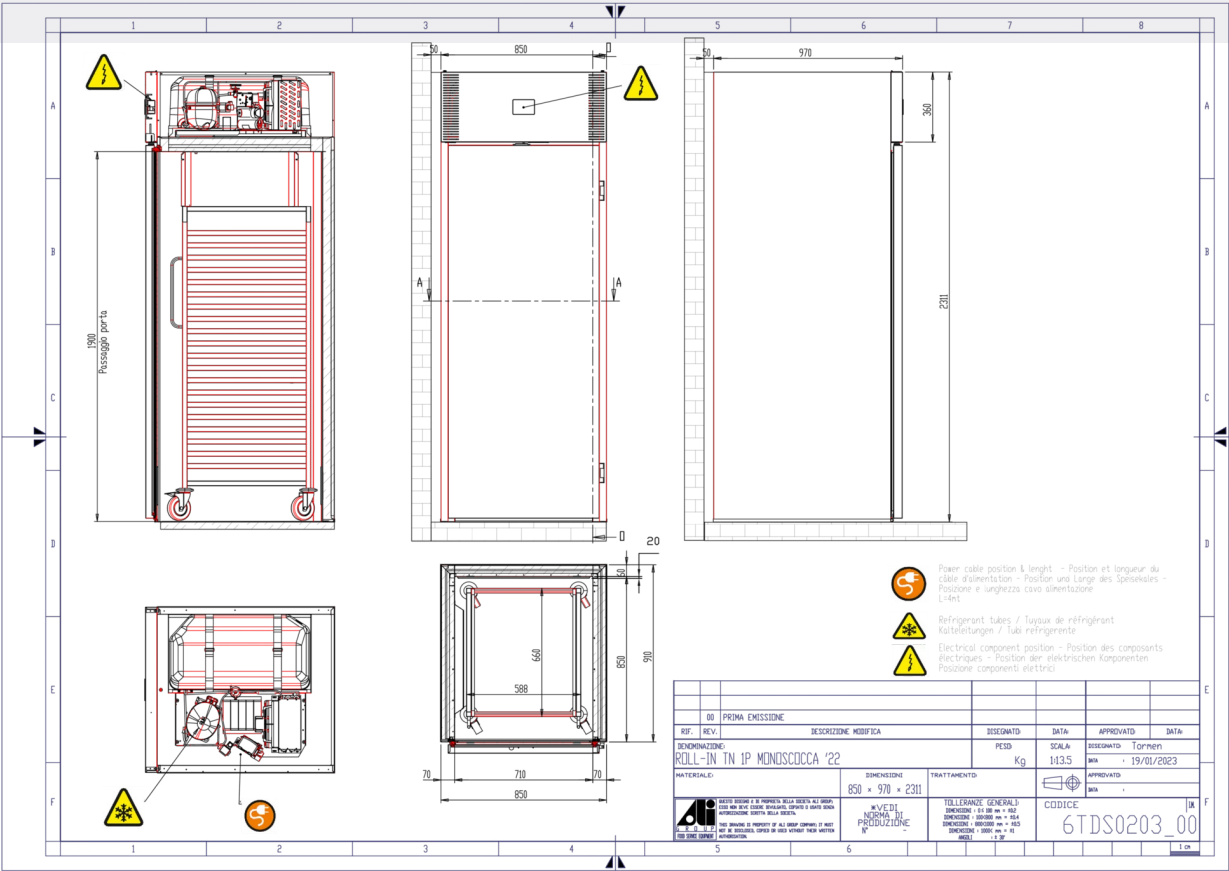
SPECIFICATION	DATA
MATERIAL	RITN-COMPACT
DIM. WIDTH	850 mm
DIM. PRODUCTIVITY	970 mm
DIM. HEIGHT	2311 mm
NET WEIGHT	205 Kg
PACKAGE VOLUME	2.45 m3
STANDARD POWER SUPPLY	230/1/50
ELECTRICAL POWER	0.375 kW
GAS/REFRIGERANT TYPE	R290A
REFRIGERATION POWER	550.5
Capacity	878

ROLL-IN STORAGE CABINET COMPACT
MONOSCOCK 1 DOOR - TEMP. +2/+10°C

CODICE
RITN-COMPACT

MODELLO
RITN-COMPACT

SERIE
REFRIGERATED
CABINETS



ACCESSORIES

CODE	MODELLO	DESCRIZIONE
TR COMPACT	TR COMPACT	18 TRAY TROLLEY 588X660X1645 75 MM PITCH