

ELECTRIC SOLID TOP ON OPEN BASE

CODICE
CR1138909T4W

MODELLO
DT94/10CTE-T4W

SERIE
DIAMANTE 4.0



GENERAL CHARACTERISTICS

Diamond 90 Touch 4.0 - Everything under control Everything is under control, perfect results every time. Thanks to the practical display, parameter selection is quick and precise. Easy and clear temperature management, and special functions are always visible and accessible from the display. Tradition and innovation, everything on your worktop A new non-slip square and rounded knob design for a more ergonomic grip and an embossed indicator that makes it easier to select the datum to be set. And with the exclusive Encoder Functionality, simply touch the parameter you want, turn the knob to adjust the level and press it to start the set datum. With water- and dirt-proof crown. Quick and precise parameter selection. Easy and clear temperature management. Special functions always visible and accessible from the display. Stainless steel outer shells and feet. Height from worktop adjustable from 840 to 900 mm. Tops with 2 mm thickness All model-identified equipment (T4W) is 4.0 Ready equipment, allowing you to benefit from all the advantages of connecting your equipment to a cloud system.

TECHNICAL SPECIFICATIONS

- Stainless steel outer shells and feet. ■ Height from worktop adjustable from 840 to 900 mm. ■ The heating of each cooking zone is achieved by means of a controlled radiation element with a safety thermostat. ■ Temperature regulation from 50 to 400°C by thermostat. ■ Possibility of setting 2 timers to control cooking. ■ An acoustic signal alerts the operator at the end of the set time. ■ Hotplate temperature control via touch screen and adjustment with ergonomic knob.

- Hotplate temperature control via touch screen and adjustment with ergonomic knob ■ Cantilevered plate with perimeter grease trough with drain hole. ■ 4 independent cooking zones. ■ industry

4.0 ready version. ■ Everything is under control, perfect results every time. Thanks to the practical display, parameter selection is quick and precise. Easy and clear temperature management, and special functions are always visible and accessible from the display. ■ Thanks to the jet-proofing certification (IPX5) obtained through specific tests, knobs and under-knobs can be washed, without compromising functionality and safety. ■ Thermostat for surface temperature regulation from 50 to 400°C, and with safety function for overtemperature protection. ■ Radiant plate size 710x710 mm thickness 18 mm made of steel with electrolytic hard chrome coating.

ELECTRIC SOLID TOP ON OPEN BASE

CODICE
CR1138909T4W

MODELLO
DT94/10CTE-T4W

SERIE
DIAMANTE 4.0

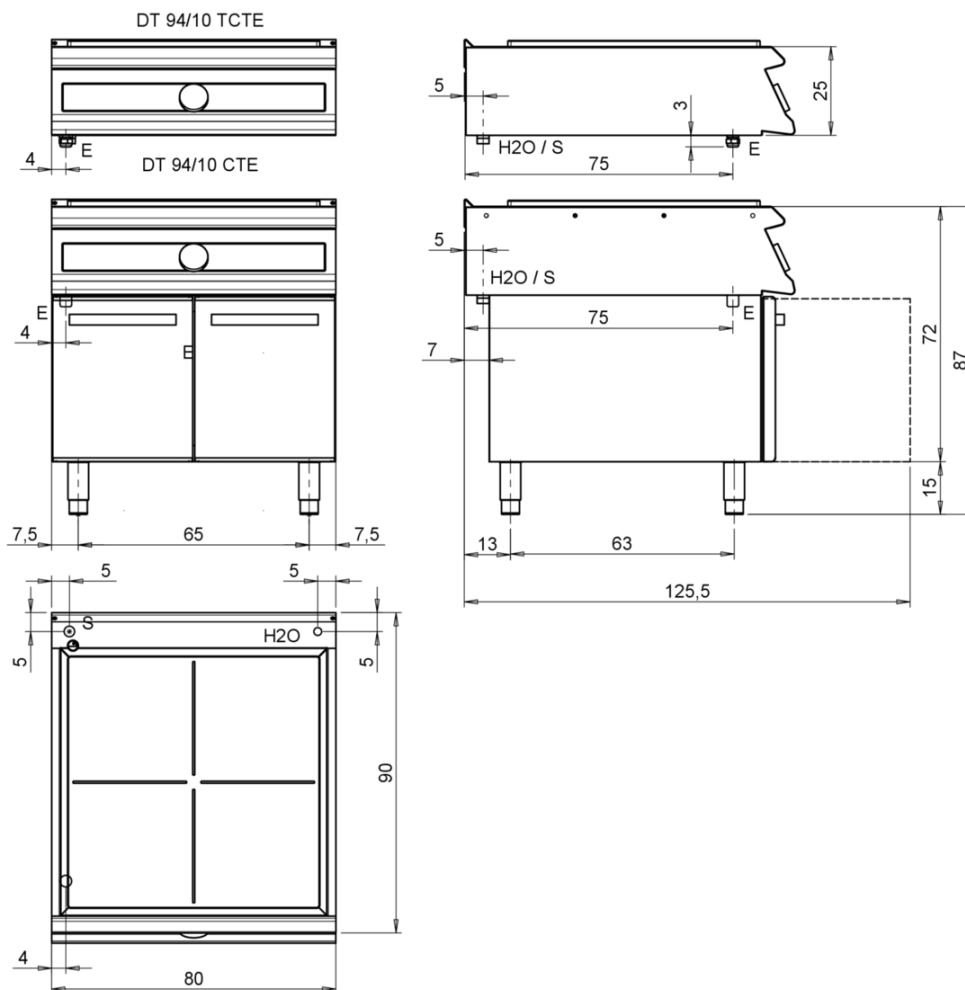
Technical Information

SPECIFICATION	DATA
MATERIAL	CR1138909T4W
DEFINITION	DT94/10CTE-T4W TUTTAP. A/G IOT ELETTRON.
COMMERCIAL LINE	DIAMANTE TOUCH
SUPPLY	ELECTRICS
DIM. WIDTH	800 mm
DIM. PRODUCTIVITY	900 mm
DIM. HEIGHT	870 mm
NET WEIGHT	146 Kg
VOLUME (net)	0,626
PACKAGE LENGTH	840 mm
PACKAGE WIDTH	1020 mm
PACKAGING HEIGHT	1170 mm
PACKAGE VOLUME	1,000 m3
GROSS PACKING WEIGHT	156.2 Kg
STANDARD POWER SUPPLY	380-415V 3N
FREQUENCY	50-60 Hz
ELECTRICAL POWER	16,000 kW
IP GRADE	IPX5
CERTIFIED MODEL	DT94/10 CTE

CODICE	MODELLO	SERIE
CR1138909T4W	DT94/10CTE-T4W	DIAMANTE 4.0

SCHEMA DI INSTALLAZIONE - INSTALLATION DIAGRAM - INSTALLATIONSPLAN - SCHÉMA D'INSTALLATION - ESQUEMA DE INSTALACION -INSTALLATIESCHEMA - IINSTALLATIONSRIITNINGAR

MISURE IN cm - DIMENSIONS IN cm - ABMESSUNGEN IN cm - MESURES EN cm
MEDIDAS EN cm - MATEN IN cm - DIMENSIONES EN cm



Legenda - Legende - Key - Légende - Leyenda - Leyenda - Leyenda - Leyenda	
E	Pressacavo entrata linea elettrica - Stopfbuchse - Electric cable stress relief - Presse étoupe de câble él. - Pisacable - Elektrische kabelwartel - Entrada cabo eléctrico
S	Attacco scarico acqua - Wasserablauf - Water outlet - Vidange de l'eau - Desaguadero - Wateraftapaansluiting - Junção descarga água
S1	Scarico vasca - Wannenabflussrohr - Pan outlet - Vidange du bac - Descarga cuba - Water toevoer - Descarga da cuba
S2	Valvola di depressione - Anti-depression valve - Unterdruck ventil - Soupape de dépression - Válvula de depresión - Onderdrukklep - Válvula de depressão
S3	Scarico acqua intercapedine - Wasserablauf Zwischenraum - Jacket water drain Evacuation eau double envelope - Descarga de agua intersticios - Afvoer water tussenuimte - Descarga de água na marmitta com Sistema de aquecimento indirecto
G	Arrivo gas - Gasanschluss - Gas connection - Arrivée gaz - Union de gas - Gasaansluiting - Ligação gás
H20	Arrivo acqua - Wasseranschluss - Water inlet - Arrivée eau - Union de agua - Wateraansluiting - Junção alimentação água
A1 =	Calda - Heiss - Warm - Chaude - Caliente - Warm - Morno
A2 =	Fredda - Kalt - Cold - Froid - Fria - Koude - Frio
L	Rubinetto di livello - Level tap - Wasserhahn - Robinet de niveau - Grifo de nível - Niveaakraan - Torneira de nível

ELECTRIC SOLID TOP ON OPEN BASE

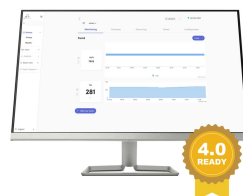
CODICE
CR1138909T4W

MODELLO
DT94/10CTE-T4W

SERIE
DIAMANTE 4.0



Possibility of setting 2 timers to control cooking. An acoustic signal warns the operator at the end of the set time.



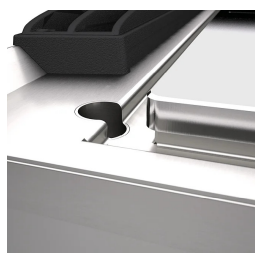
Temperature control via touch screen and adjustment with ergonomic knob



Hotplate temperature control via touch screen and adjustment with ergonomic knob



Everything is under control, perfect results every time. Thanks to the practical display, parameter selection is quick and precise. Easy and clear temperature management, and special functions are always visible and accessible from the display.



Cantilevered plate with perimeter grease trough with drain hole.



Thanks to the jet-proofing certification (IPX5) obtained through specific tests, knobs and under-knobs can be washed, without compromising functionality and safety.



4 independent cooking zones.

ELECTRIC SOLID TOP ON OPEN BASE

CODICE
CR1138909T4W

MODELLO
DT94/10CTE-T4W

SERIE
DIAMANTE 4.0

ACCESSORIES

CODE	MODELLO	DESCRIZIONE
CR1357499	4.0IOTPRO	PRO Subscription - Cloud
CR1357479	4.0IOTENTRY	ENTRY Subscription - Cloud
CR0996979	DBVP4	Diamond door 39.5x3.6x46.5 cm for 40 cm compartments
CR0997009	DBVPA4	Accessory Diamond door 39.5x3.6x46.5 cm for 40 cm compartments
CR0997029	DAPC	Accessories for accessory diamond knife holder
CR0997019	DAPD	Accessories for Diamond door accessories
CR0997039	DAPS	Accessories for diamond spice rack
CR0997049	DAPM	Accessories for accessory Diamond door
CR0997059	DAPDB	Accessories for accessory Diamond door/bottle holders
CR1353589	DBVC4	Drawer kit 39.5x56x46.5 cm for compartments of 40