

6-BURNER GAS COOKER ON GAS OVEN

CODICE
CR0993599

MODELLO
D76/10CGG

SERIE
DIAMANTE 70



GENERAL CHARACTERISTICS

In addition to offering the widest choice of solutions and 2 mm thick and 70 cm deep tops, this series has all the power, robustness and functionality you need to work efficiently. Scotch Brite finish stainless steel outer shells and feet. Worktop height adjustable from 840 to 900 mm. Modularity of range: 200-400-600-800-1200. Wide range of accessories.

TECHNICAL SPECIFICATIONS

■ All kitchens are equipped with 3.5 and 5.6 kW burners with stabilized flame, in cast iron, nickel-plated with a perfect protection of upper burners thermocouples obtained with a special "dome" shaped protection. ■ Thermocouple safety valves with pilot flame. ■ Acid-resistant black enameled cast iron grills.

■ 90° venturi that prevents the nozzle from clogging and accumulating dirt. ■ Nickel-plated cast-iron stabilised flame burners with double-crown spreader (improved performance facilitated by a flame distributed over two different sectors), Grid with long spokes

to facilitate holding small pots and pans ■ Removable AISI 304 stainless steel bowl for maximum hygiene. ■ For gas ovens, radiant plate in cast iron for even heat distribution. ■ For electric ovens, even heat distribution, stainless steel for electric ovens. Insulated stainless steel door and inner door mounted on high-strength hinges. ■ Thanks to the jet-proofing certification obtained in specific tests, the knobs and under-knobs can be washed, without compromising functionality and safety.

6-BURNER GAS COOKER ON GAS OVEN

CODICE
CR0993599

MODELLO
D76/10CGG

SERIE
DIAMANTE 70

Technical Information

SPECIFICATION	DATA
MATERIAL	CR0993599
DEFINITION	D76/10 CGG 6 FUOCHI FORNO GAS+ARM.N.
COMMERCIAL LINE	DIAMANTE
SUPPLY	GAS
DIM. WIDTH	1200 mm
DIM. PRODUCTIVITY	730 mm
DIM. HEIGHT	870 mm
NET WEIGHT	152 Kg
VOLUME (net)	0,762
PACKAGE LENGTH	1240 mm
PACKAGE WIDTH	850 mm
PACKAGING HEIGHT	1130 mm
PACKAGE VOLUME	1,192 m3
GROSS PACKING WEIGHT	170,4 Kg
GAS POWER	27,30
GAS POWER (G25.3/25mbar)	24,60
GAS/REFRIGERANT TYPE	GPL 28-30/37 mbar
N. FIRES/PLATES	SEI FUOCHI
CERTIFIED MODEL	D76/10 CGG

6-BURNER GAS COOKER ON GAS OVEN



weinnovate cooking

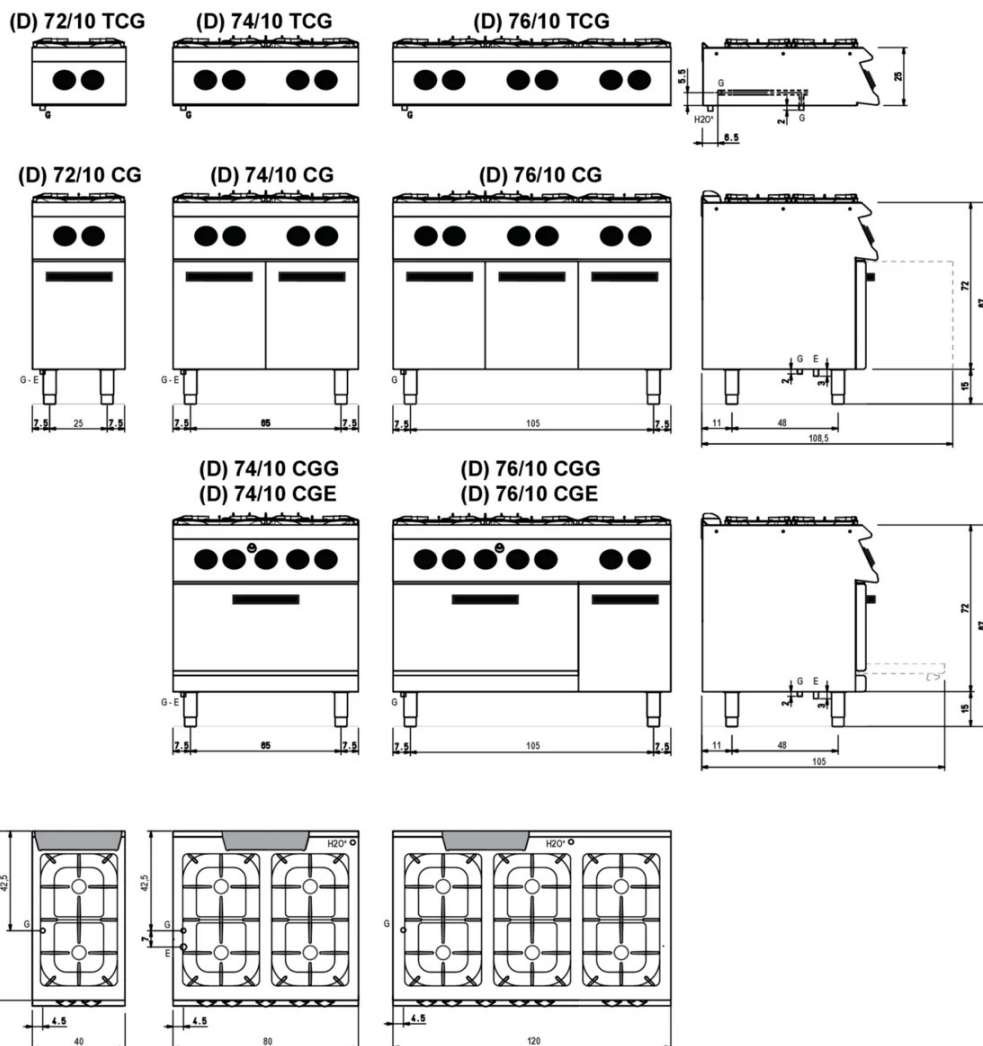
CODICE
CR0993599

MODELLO
D76/10CGG

SERIE
DIAMANTE 70

SCHEMA DI INSTALLAZIONE - INSTALLATION DIAGRAM - INSTALLATIONSPLAN - SCHÉMA D'INSTALLATION - ESQUEMA DE INSTALACION - INSTALLATIESCHEMA - IINSTALLATIONSRIJNINGAR

MISURE IN cm - DIMENSIONS IN cm - ABMESSUNGEN IN cm
MESURES EN cm - MEDIDAS EN cm - MATEN IN cm



Legenda - Legende - Key - Légende - Leyenda - Legenda

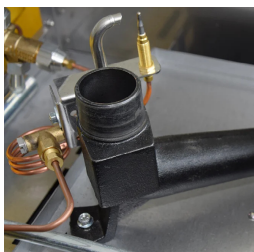
- E** Pressacavo entrata linea elettrica - Stopfbuchse
Electric cable stress relief - Presse étoupe de câble él
Pisacable - Elektrische kabelwartel
- G** Attacco arrivo gas - Gasanschluss - Gas connection
Arrivée gaz - Union de gas - Gasaansluiting
EN 10226-1 R 1/2; EN ISO 228-1 G 1/2 (DK)
- H2O*** Attacco arrivo acqua - Wasseranschluss - Water inlet
Arrivée eau - Union de agua - Wateraansluiting
EN ISO 228-1 G 3/4

6-BURNER GAS COOKER ON GAS OVEN

CODICE
CR0993599

MODELLO
D76/10CGG

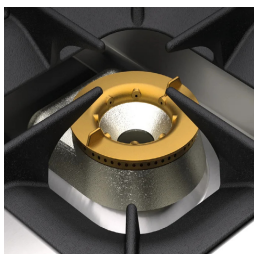
SERIE
DIAMANTE 70



90° venturi that prevents the nozzle from clogging and accumulating dirt.



Thanks to the jet-proofing certification (IPX5) obtained through specific tests, knobs and under-knobs can be washed, without compromising functionality and safety.



Nickel-plated cast-iron stabilised flame burners with double-crown spreader (improved performance facilitated by a flame distributed over two different sectors), Grid with long spokes to facilitate holding small pots and pans



Removable AISI 304 stainless steel bowl for maximum hygiene.



For gas ovens, radiant plate in cast iron for even heat distribution even heat distribution, stainless steel for electric ovens. Insulated stainless steel door and inner door mounted on high-strength hinges.

6-BURNER GAS COOKER ON GAS OVEN

CODICE
CR0993599

MODELLO
D76/10CGG

SERIE
DIAMANTE 70

ACCESSORIES

CODE	MODELLO	DESCRIZIONE
SUPBRUC	SUPBRUC	Supplement for burner 10 kw 10 (Kcal 8598.45)
MA97365000	GGN1/1	CHROME GRILLE GN1/1
MA97375000	GGN2/1	CHROME GRILLE GN2/1
MA97377000	BF9M-X	Chrome-plated steel grill for oven 93x62 cm MAXI
MA97376900	TGN2/1	AISI 304 stainless steel tray for oven 53x65x1 cm GN 2/1
MA97378000	BF9M-T	AISI 304 stainless steel baking tray for oven 93x62x1,5 cm MAXI
CR1353839	CR1353839	Smooth cast iron radiant plate 39.4x34.8 cm
CR1353849	CR1353849	Striped radiant plate 39.6x34.8 cm