

ELECTRIC MULTI-PURPOSE BRATT PAN

CODICE
CR0990599

MODELLO
D93/10KBEF

SERIE
DIAMANTE 90



GENERAL CHARACTERISTICS

In addition to offering the maximum choice of solutions and 2 mm thick and 90 cm deep tops, this series has all the power, robustness and functionality you need to work efficiently. External coatings and feet in stainless steel with Scotch Brite finish. Working table height adjustable from 840 to 900 mm. Range modularity: 200-400-600-800-1200 Wide range of accessories.

TECHNICAL SPECIFICATIONS

■ Tank made entirely of AISI 304 steel. ■ Heating is achieved by means of armoured heating elements placed under the bottom of the tank. ■ The temperature, thermostatically controlled, is adjustable from 50 to 300 °C.

■ Plate with armoured incoloy heating elements placed under the bottom for cooking with temperature uniformity. ■ Equipment certified for low voltage directive 2014/35/EU according to the international CB scheme. ■ Thanks to the jet-proofing certification (IPX5) obtained through specific tests, knobs and under-knobs can be washed, without compromising functionality and safety.

ELECTRIC MULTI-PURPOSE BRATT PAN

CODICE
CR0990599

MODELLO
D93/10KBEF

SERIE
DIAMANTE 90

Technical Information

SPECIFICATION	DATA
MATERIAL	CR0990599
DEFINITION	D93/10 KBEF MULTIPLA M60
COMMERCIAL LINE	DIAMANTE
SUPPLY	ELECTRICS
DIM. WIDTH	600 mm
DIM. PRODUCTIVITY	900 mm
DIM. HEIGHT	870 mm
NET WEIGHT	76.6 Kg
VOLUME (net)	0,470
PACKAGE LENGTH	660 mm
PACKAGE WIDTH	1020 mm
PACKAGING HEIGHT	1150 mm
PACKAGE VOLUME	0,774 m3
GROSS PACKING WEIGHT	89 Kg
STANDARD POWER SUPPLY	380-415V 3N
FREQUENCY	50-60 Hz
ELECTRICAL POWER	8,100 kW
IP GRADE	IPX5
CERTIFIED MODEL	D93/10 KBEF

ELECTRIC MULTI-PURPOSE BRATT PAN

CODICE
CR0990599

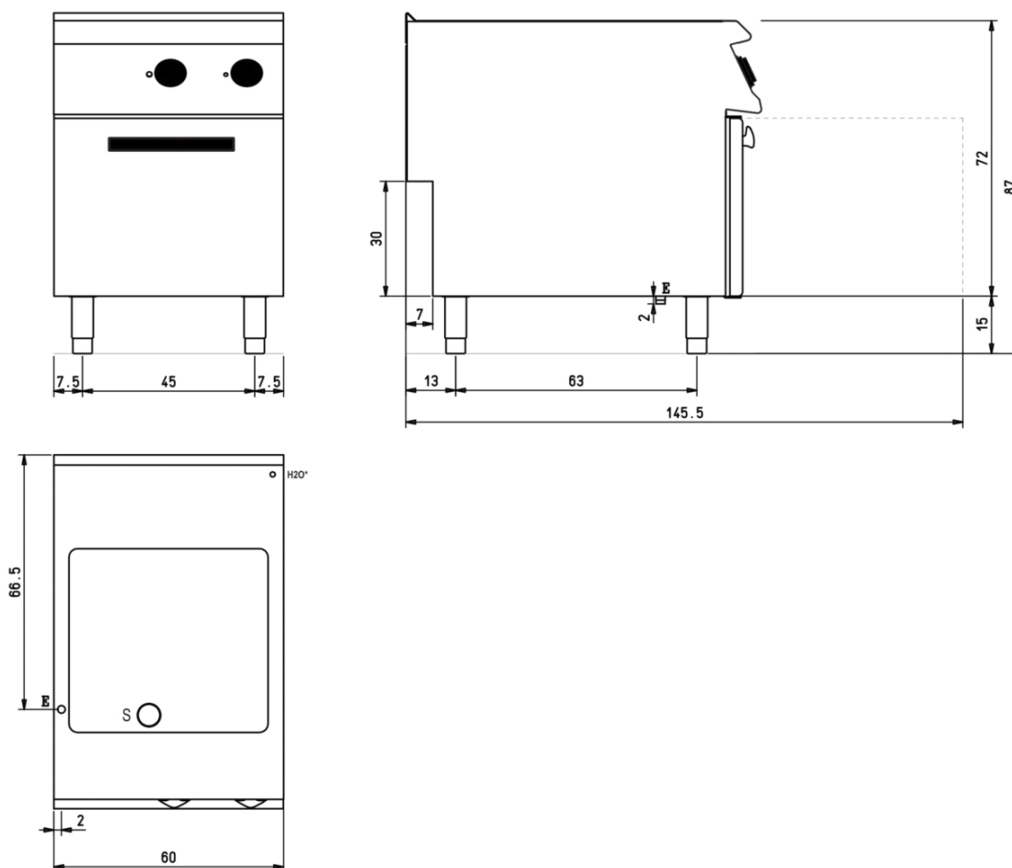
MODELLO
D93/10KBEF

SERIE
DIAMANTE 90

SCHEMA DI INSTALLAZIONE - INSTALLATION DIAGRAM - INSTALLATIONSPLAN - SCHÉMA D'INSTALLATION - ESQUEMA DE INSTALACION - INSTALLATIESCHEMA - IINSTALLATIONSRIJNINGAR

MISURE IN cm - DIMENSIONS IN cm - ABMESSUNGEN IN cm
MESURES EN cm - MEDIDAS EN cm - MATEN IN cm

(D) 93/10 KBEF



Legenda - Legende - Key - Légende - Leyenda - Legenda

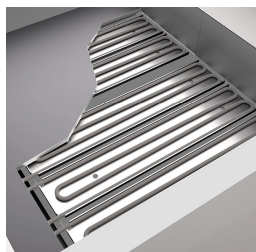
- E** Pressacavo entrata linea elettrica - Stopfbuchse - Electric cable stress relief
Presse étoupe de câble él. - Pisacable - Elektrische kabelwartel
- S** Scarico vasca - Wannenabflussrohr - Pan outlet
Vidange du bac - Descarga cuba - Water toevoer
- H20*** Attacco arrivo acqua - Wasseranschluss - Water inlet
Arrivée eau - Union de agua - Wateraansluiting
EN ISO 228-1 G 3/4

ELECTRIC MULTI-PURPOSE BRATT PAN

CODICE
CR0990599

MODELLO
D93/10KBEF

SERIE
DIAMANTE 90



Predisposition for core probe, for even greater cooking control. Reaching the set core temperature is signalled by an acoustic signal



Equipment certified for low voltage directive 2014/35/EU according to the international CB scheme.



Thanks to the jet-proofing certification (IPX5) obtained through specific tests, knobs and under-knobs can be washed, without compromising functionality and safety.

ELECTRIC MULTI-PURPOSE BRATT PAN

CODICE
CR0990599

MODELLO
D93/10KBEF

SERIE
DIAMANTE 90

ACCESSORIES

CODE	MODELLO	DESCRIZIONE
CR0592789	ZF6	Front plinth - FOR INSTALLING EQUIPMENT WITH FLOOR HEIGHT 90 CM L=60
CR0592830	ZG	SKIRTING JOINT
CR0592820	9ZL	Side plinth
MA97432000	R	WHEEL KIT (2 + 2) Ø 100
MA97433000	RI	WHEEL KIT (2 + 2) Ø 101 STAINLESS STEEL
CR0592869	PZM	NO. 4 STAINLESS STEEL FEET FOR INSTALLATION ON CONCRETE PLINTH
CR0593580	9PT	No. 4 stainless steel feet for installation on tops
CR0592879	KPA	N.2 STAINLESS STEEL FEET WITH FLANGE