

# DIRECT GAS BOILING PAN 50lt

CODICE  
CR0991049

MODELLO  
D93/10PGD05

SERIE  
DIAMANTE 90



## GENERAL CHARACTERISTICS

In addition to offering the maximum choice of solutions and 2 mm thick and 90 cm deep tops, this series has all the power, robustness and functionality you need to work efficiently. External coatings and feet in stainless steel with Scotch Brite finish. Working table height adjustable from 840 to 900 mm. Range modularity: 200-400-600-800-1200 Wide range of accessories.

## TECHNICAL SPECIFICATIONS

■ AISI 304 stainless steel tanks with AISI 316 bottom. ■ Water loading by means of 2 solenoid valves, with the possibility of loading cold or hot water. ■ Frontal drain by means of 2" chrome-plated brass faucet. ■ Gas version: heating by means of 2 AISI 304 steel burners, positioned at the bottom of the vessel (direct heating) or in the cavity (indirect heating). ■ Indirect electric version: heating with 2 sets of armoured heating elements positioned inside the cavity. ■ Direct electric version: heating by means of 3 stainless steel heating elements positioned externally on the bottom of the container.

■ Possibility of hot or cold water loading ■ Stainless steel tank with aisi 316 bottom ■ Equipment certified for low voltage directive 2014/35/EU according to the international CB scheme. ■ Thanks to the jet-proofing certification (IPX5) obtained through specific tests, knobs and under-knobs can be washed, without compromising functionality and safety.

## DIRECT GAS BOILING PAN 50lt

CODICE  
CR0991049

MODELLO  
D93/10PGD05

SERIE  
DIAMANTE 90

### Technical Information

SPECIFICATION	DATA
MATERIAL	CR0991049
DEFINITION	D93/10 PGD05 PENTOLA GAS DIR.M60 50LT
COMMERCIAL LINE	DIAMANTE
SUPPLY	MIXED
DIM. WIDTH	600 mm
DIM. PRODUCTIVITY	900 mm
DIM. HEIGHT	870 mm
NET WEIGHT	154.8 Kg
VOLUME (net)	0,470
PACKAGE LENGTH	860 mm
PACKAGE WIDTH	1020 mm
PACKAGING HEIGHT	1270 mm
PACKAGE VOLUME	1,114 m3
GROSS PACKING WEIGHT	170 Kg
STANDARD POWER SUPPLY	220-240V 1N
FREQUENCY	50 Hz
ELECTRICAL POWER	0,015 kW
GAS POWER	10,50
GAS POWER (G25.3/25mbar)	10,00
IP GRADE	IPX5
CERTIFIED MODEL	D93/10 PGD05
Capacity	50

# DIRECT GAS BOILING PAN 50lt

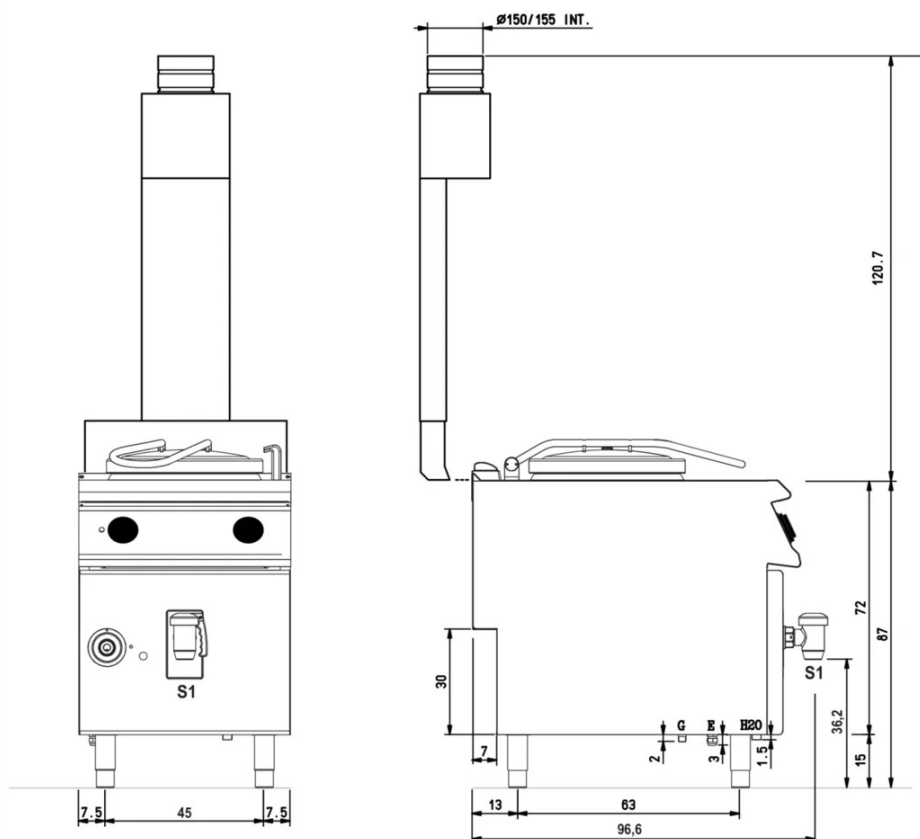
CODICE  
CR0991049

MODELLO  
D93/10PGD05

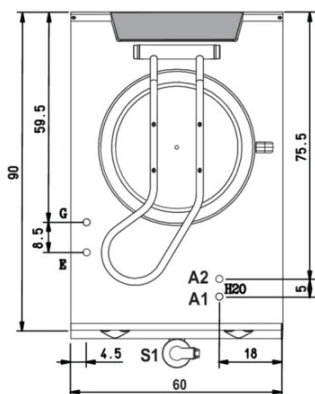
SERIE  
DIAMANTE 90

## SCHEMA DI INSTALLAZIONE - INSTALLATION DIAGRAM - INSTALLATIONSPLAN - SCHÉMA D'INSTALLATION - ESQUEMA DE INSTALACION - INSTALLATIESCHEMA - IINSTALLATIONSRIJNINGAR

MISURE IN cm - DIMENSIONS IN cm - ABMESSUNGEN IN cm  
MESURES EN cm - MEDIDAS EN cm - MATEN IN cm



### (D) 93/10 PGD05



### Legenda - Legende - Key - Légende - Leyenda - Legenda

- H2O** Attacchi arrivo acqua - Wasseranschluss - Water inlet  
Arrivée eau - Union de agua - Wateraansluiting
- A1** = Calda - Heiss - Warm - Chaude - Caliente - Warm
- A2** = Fredda - Kalt - Cold - Froid - Fria - Koude
- EN ISO 228-1 G 3/4**
- E** Pressacavo entrata linea elettrica  
Stopfbuchse - Electric cable stress relief  
Presse étoupe de câble él. - Pisacable  
Elektrische kabelwartel
- G** Attacco arrivo gas - Gasanschluss - Gas connection -  
Arrivée gaz - Union de gas - Gasaansluiting
- EN 10226-1 R 1/2; EN ISO 228-1 G 1/2 (DK)**
- S1** Scarico acqua - Wasserablauf - Water outlet  
Vidange de l'eau - Desaguadero  
Wateraftapaansluiting  
**1 1/2"**

## DIRECT GAS BOILING PAN 50lt

CODICE  
CR0991049

MODELLO  
D93/10PGD05

SERIE  
DIAMANTE 90



Possibility of hot or cold water loading



Stainless steel tank with aisi 316  
bottom



Equipment certified for low voltage  
directive 2014/35/EU according to the  
international CB scheme.



Thanks to the jet-proofing certification  
(IPX5) obtained through specific tests,  
knobs and under-knobs can be washed,  
without compromising functionality  
and safety.

## DIRECT GAS BOILING PAN 50lt

CODICE  
CR0991049

MODELLO  
D93/10PGD05

SERIE  
DIAMANTE 90

### ACCESSORIES

CODE	MODELLO	DESCRIZIONE
MA97347000	9C5	COLANDER BASKET
MA97348000	9CV5	VEGETABLE STRAINER BASKET FOR POT
MA97350900	9C10	COLANDER BASKET
MA97351000	9C15	COLANDER BASKET
MA97352000	9CV10	VEGETABLE STRAINER BASKET FOR POT
MA97353000	9CV15	VEGETABLE STRAINER BASKET FOR POT
MA97354000	9-I10	FUNNEL FOR POT DISCHARGE
MA97355000	9-I15	FUNNEL FOR POT DISCHARGE
CR0592789	ZF6	Front plinth - FOR INSTALLING EQUIPMENT WITH FLOOR HEIGHT 90 CM L=60
CR0592830	ZG	SKIRTING JOINT
CR0592820	9ZL	Side plinth
MA97432000	R	WHEEL KIT (2 + 2) Ø 100
MA97433000	RI	WHEEL KIT (2 + 2) Ø 101 STAINLESS STEEL
CR0592869	PZM	NO. 4 STAINLESS STEEL FEET FOR INSTALLATION ON CONCRETE PLINTH
CR0593580	9PT	No. 4 stainless steel feet for installation on tops
CR0592879	KPA	N.2 STAINLESS STEEL FEET WITH FLANGE
MA97349000	9-I5	POWDER DISCHARGE INSTALLATION-50 Lt. HOLES Ø 10-15-36 MM