

# ELECTRIC FRYER 1 BASIN 22 L

CODICE  
CR0996809

MODELLO  
D9422/10FREM

SERIE  
DIAMANTE 90



## GENERAL CHARACTERISTICS

In addition to offering the maximum choice of solutions and 2 mm thick and 90 cm deep tops, this series has all the power, robustness and functionality you need to work efficiently. External coatings and feet in stainless steel with Scotch Brite finish. Working table height adjustable from 840 to 900 mm. Range modularity: 200-400-600-800-1200 Wide range of accessories.

## TECHNICAL SPECIFICATIONS

■ AISI 18/10 stainless steel tanks with cold zone and foam expansion zone. ■ Oil drain taps. ■ Oil drip pans on request. ■ Safety thermostat (230°C) against excessive oil temperatures. ■ IPX5 water jet protection

■ The large cold zone allows frying residues to settle, significantly extending the quality and life of the oil. ■ In the 22 litre electric

version, the heating element can be rotated by more than 90°. ■ Equipment certified for low voltage directive 2014/35/EU according to the international CB scheme. ■ Thanks to the jet-proofing certification (IPX5) obtained through specific tests, knobs and under-knobs can be washed, without compromising functionality and safety.

# ELECTRIC FRYER 1 BASIN 22 L

CODICE  
CR0996809

MODELLO  
D9422/10FREM

SERIE  
DIAMANTE 90

## Technical Information

| SPECIFICATION         | DATA                                  |
|-----------------------|---------------------------------------|
| MATERIAL              | CR0996809                             |
| DEFINITION            | D9422/10 FREM FRIG.EL.2V 22LT MELTING |
| COMMERCIAL LINE       | DIAMANTE                              |
| SUPPLY                | ELECTRICS                             |
| DIM. WIDTH            | 860 mm                                |
| DIM. PRODUCTIVITY     | 1020 mm                               |
| DIM. HEIGHT           | 870 mm                                |
| NET WEIGHT            | 114.8 Kg                              |
| VOLUME (net)          | 0,763                                 |
| PACKAGE LENGTH        | 860 mm                                |
| PACKAGE WIDTH         | 1020 mm                               |
| PACKAGING HEIGHT      | 1150 mm                               |
| PACKAGE VOLUME        | 1,010 m3                              |
| GROSS PACKING WEIGHT  | 130 Kg                                |
| STANDARD POWER SUPPLY | 380-415V 3N                           |
| FREQUENCY             | 50-60 Hz                              |
| ELECTRICAL POWER      | 36,000 kW                             |
| TENSION               | 400                                   |
| IP GRADE              | IPX5                                  |
| CERTIFIED MODEL       | D9422/10 FREM                         |
| Capacity              | 20 litri                              |

# ELECTRIC FRYER 1 BASIN 22 L

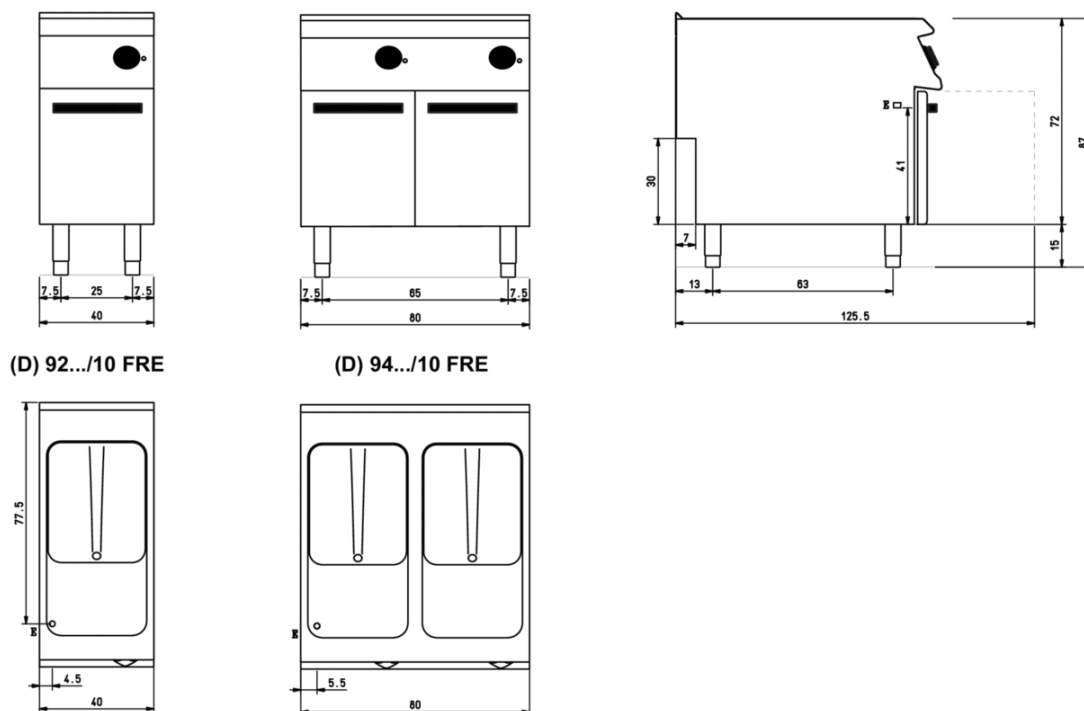
CODICE  
CR0996809

MODELLO  
D9422/10FREM

SERIE  
DIAMANTE 90

## SCHEMA DI INSTALLAZIONE - INSTALLATION DIAGRAM - INSTALLATIONSPLAN - SCHÉMA D'INSTALLATION - ESQUEMA DE INSTALACION - INSTALLATIESCHEMA - IINSTALLATIONSRTNINGAR

MISURE IN cm - DIMENSIONS IN cm - ABMESSUNGEN IN cm  
MESURES EN cm - MEDIDAS EN cm - MATEN IN cm



Legenda - Legende - Key - Légende - Leyenda - Legenda

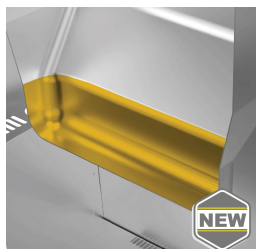
- E** Pressacavo entrata linea elettrica - Stopfbuchse - Electric cable stress relief  
Presse étoupe de câble él. - Pisacable - Elektrische kabelwartel

## ELECTRIC FRYER 1 BASIN 22 L

CODICE  
CR0996809

MODELLO  
D9422/10FREM

SERIE  
DIAMANTE 90



The large cold zone allows frying residues to settle, significantly extending the quality and life of the oil.



Heating element completely removable from the tank for faster and more thorough cleaning.



Equipment certified for low voltage directive 2014/35/EU according to the international CB scheme.



Thanks to the jet-proofing certification (IPX5) obtained through specific tests, knobs and under-knobs can be washed, without compromising functionality and safety.

## ELECTRIC FRYER 1 BASIN 22 L

CODICE  
CR0996809

MODELLO  
D9422/10FREM

SERIE  
DIAMANTE 90

### ACCESSORIES

| CODE         | MODELLO   | DESCRIZIONE   |
|--------------|-----------|---|
| 9FFE22       | CR1652579 | TANK BOTTOM FILTER FOR ELECTRIC FRYERS 22 LT                                |
| CR1353879    | DCF15/17  | Basket for tub 15 - 17 litres 1 pcs 24x33,7x12 cm capacity 15-17 litres     |
| CR1353889    | DCF15/17P | Small basket for tub 15-17 litres 1 pcs 12x33,7x12 cm capacity 15-17 litres |
| CR1353929    | D9BRO     | Oil pan 10-12 -15-17-22-23 litres   |
| BN0221100047 | CA40/10   | Chimney extension for mod. 40 cm h=22 cm                                    |
| BN0221100048 | CA60/10   | Chimney extension for mod. 60 cm h=22 cm                                    |
| CR0592779    | ZF4       | Front plinth - FOR INSTALLING EQUIPMENT WITH FLOOR HEIGHT 90 CM L=40        |
| CR0592830    | ZG        | SKIRTING JOINT  |
| CR0592820    | 9ZL       | Side plinth   |
| MA97432000   | R         | WHEEL KIT (2 + 2) Ø 100   |
| MA97433000   | RI        | WHEEL KIT (2 + 2) Ø 101 STAINLESS STEEL                                     |
| CR0592869    | PZM       | NO. 4 STAINLESS STEEL FEET FOR INSTALLATION ON CONCRETE PLINTH              |
| CR0593580    | 9PT       | No. 4 stainless steel feet for installation on tops                         |
| CR0592879    | KPA       | N.2 STAINLESS STEEL FEET WITH FLANGE  |