

ELECTRIC COOKER WITH 4 SQUARE TOP PLATES

CODICE
CR0995629

MODELLO
D94/10TCEPQ

SERIE
DIAMANTE 90



GENERAL CHARACTERISTICS

In addition to offering the maximum choice of solutions and 2 mm thick and 90 cm deep tops, this series has all the power, robustness and functionality you need to work efficiently. External coatings and feet in stainless steel with Scotch Brite finish. Working table height adjustable from 840 to 900 mm. Range modularity: 200-400-600-800-1200 Wide range of accessories.

TECHNICAL SPECIFICATIONS

■ Square 300x300 mm cast iron heating plates, maximum power 4 kW, equipped with safety thermostat. ■ Heating control with 7-position selector switch.

■ Square plates of 30x30 each, fixed watertight on the worktop. ■ The temperature is adjusted by means of a 7-position selector

switch, and a warning light indicating the activation of the heating is located on the dashboard. ■ Equipment certified for low voltage directive 2014/35/EU according to the international CB scheme. ■ Thanks to the jet-proofing certification (IPX5) obtained through specific tests, knobs and under-knobs can be washed, without compromising functionality and safety.

ELECTRIC COOKER WITH 4 SQUARE TOP PLATES

CODICE
CR0995629

MODELLO
D94/10TCEPQ

SERIE
DIAMANTE 90

Technical Information

| SPECIFICATION | DATA |
|-----------------------|-----------------------------------|
| MATERIAL | CR0995629 |
| DEFINITION | D94/10 TCEPQ 4 PIASTRE QUADRE TOP |
| COMMERCIAL LINE | DIAMANTE |
| SUPPLY | ELECTRICS |
| DIM. WIDTH | 800 mm |
| DIM. PRODUCTIVITY | 900 mm |
| DIM. HEIGHT | 250 mm |
| NET WEIGHT | 64 Kg |
| VOLUME (net) | 0,180 |
| PACKAGE LENGTH | 860 mm |
| PACKAGE WIDTH | 1020 mm |
| PACKAGING HEIGHT | 570 mm |
| PACKAGE VOLUME | 0,500 m3 |
| GROSS PACKING WEIGHT | 75 Kg |
| STANDARD POWER SUPPLY | 380-415V 3N |
| FREQUENCY | 50-60 Hz |
| ELECTRICAL POWER | 16,000 kW |
| N. FIRES/PLATES | QUATTRO FUOCHI |
| TENSION | 400 |
| IP GRADE | IPX5 |
| CERTIFIED MODEL | D94/10 TCEPQ |

ELECTRIC COOKER WITH 4 SQUARE TOP PLATES

CODICE
CR0995629

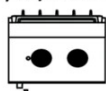
MODELLO
D94/10TCEPQ

SERIE
DIAMANTE 90

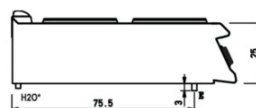
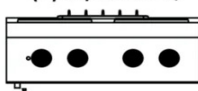
SCHEMA DI INSTALLAZIONE - INSTALLATION DIAGRAM - INSTALLATIONSPLAN - SCHÉMA D'INSTALLATION - ESQUEMA DE INSTALACION - INSTALLATIESCHEMA - IINSTALLATIONSRTNINGAR

MISURE IN cm - DIMENSIONS IN cm - ABMESSUNGEN IN cm
MESURES EN cm - MEDIDAS EN cm - MATEN IN cm

(D) 92/10TCEPQ



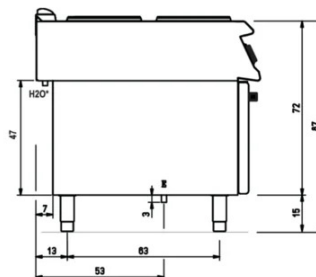
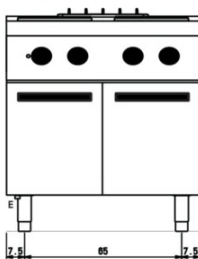
(D) 94/10TCEPQ



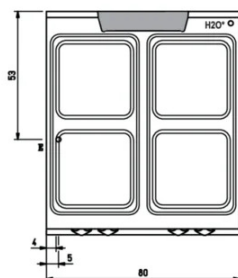
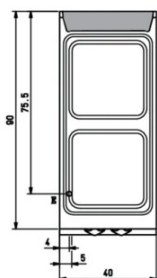
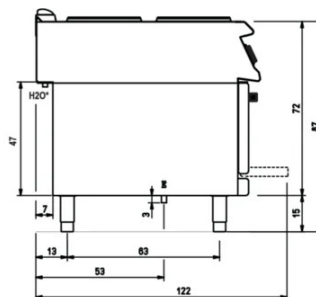
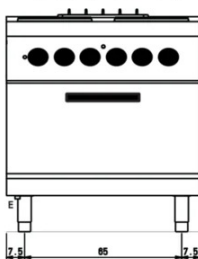
(D) 92/10CEPQ



(D) 94/10CEPQ



(D) 94/10CEEPQ



Legenda - Legende - Key - Légende - Leyenda - Legenda

E Pressacavo entrata linea elettrica - Stopfbuchse
Electric cable stress relief - Presse étoupe de câble él
Pisacable - Elektrische kabelwartel

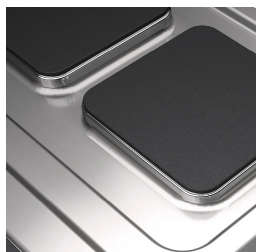
H20* Attacco arrivo acqua - Wasseranschluss - Water inlet
Arrivée eau - Union de agua - Wateraansluiting
EN ISO 228-1 G 3/4

ELECTRIC COOKER WITH 4 SQUARE TOP PLATES

CODICE
CR0995629

MODELLO
D94/10TCEPQ

SERIE
DIAMANTE 90



Square plates of 30x30 each, fixed watertight on the worktop.



The temperature is adjusted by means of a 7-position selector switch, and a warning light indicating the activation of the heating is located on the dashboard.



Equipment certified for low voltage directive 2014/35/EU according to the international CB scheme.



Thanks to the jet-proofing certification (IPX5) obtained through specific tests, knobs and under-knobs can be washed, without compromising functionality and safety.

ELECTRIC COOKER WITH 4 SQUARE TOP PLATES

CODICE
CR0995629

MODELLO
D94/10TCEPQ

SERIE
DIAMANTE 90

ACCESSORIES

| CODE | MODELLO | DESCRIZIONE |
|-----------|---------|--|
| CR1355469 | D94/10B | Open base 80cm series 90 |
| CR0996979 | DBVP4 | Diamond door 39.5x3.6x46.5 cm for 40 cm compartments |
| CR0997009 | DBVPA4 | Accessory Diamond door 39.5x3.6x46.5 cm for 40 cm compartments |
| CR0997029 | DAPC | Accessories for accessory diamond knife holder |
| CR0997019 | DAPD | Accessories for Diamond door accessories |
| CR0997039 | DAPS | Accessories for diamond spice rack |
| CR0997049 | DAPM | Accessories for accessory Diamond door |
| CR0997059 | DAPDB | Accessories for accessory Diamond door/bottle holders |
| CR1353589 | DBVC4 | Drawer kit 39.5x56x46.5 cm for compartments of 40 |