

# MULTIFUNCTION FIT PAN CLASSIC GN1/1

CODICE  
CR1356529

MODELLO  
D92/10MAE

SERIE  
DIAMANTE 90



## GENERAL CHARACTERISTICS

In addition to offering the maximum choice of solutions and 2 mm thick and 90 cm deep tops, this series has all the power, robustness and functionality you need to work efficiently. External coatings and feet in stainless steel with Scotch Brite finish. Working table height adjustable from 840 to 900 mm. Range modularity: 200-400-600-800-1200 Wide range of accessories.

## TECHNICAL SPECIFICATIONS

■ Thermoblock' heating elements, armoured and encased in a high heat-resistant aluminium casting. ■ Automatic water filling programmable in 3 different modes: automatic with litre counter, fast, slow. ■ Use in 7 functions: fry top / BRATT PAN / pasta cooker / slow cooking / steaming / kettle / bain-marie. ■ Two USB outputs located under the dashboard (compartment area) for storing recipes and updating software. ■ Control of cooking by core probe. ■ Product discharge via dedicated hole on tray positioned on compartment. ■ Dedicated water drain with overflow. ■ Internal memory for storing

pre-set recipes, transferable to another device via USB. ■ Double-walled lid without perimeter seal.

■ Automatic water filling with the possibility of programming litres. ■ Mains water drain with overflow drain and basin drain hole with sealing plug. ■ Control of cooking by core probe. ■ Easy to understand and use Touch Screen control panel. Possibility of storing personal recipes. ■ Basin for draining the cooked product into the tank. Guaranteed cleanliness of the station and easy transport of products.

# MULTIFUNCTION FIT PAN CLASSIC GN1/1

CODICE  
CR1356529

MODELLO  
D92/10MAE

SERIE  
DIAMANTE 90

## Technical Information

SPECIFICATION	DATA
MATERIAL	CR1356529
DEFINITION	D92/10MAE NEW MULTI COOKER FITPAN OLIS
COMMERCIAL LINE	DIAMANTE
SUPPLY	ELECTRICS
DIM. WIDTH	400 mm
DIM. PRODUCTIVITY	900 mm
DIM. HEIGHT	870 mm
NET WEIGHT	90 Kg
VOLUME (net)	0,313
PACKAGE LENGTH	450 mm
PACKAGE WIDTH	1020 mm
PACKAGING HEIGHT	1170 mm
PACKAGE VOLUME	0,390 m3
GROSS PACKING WEIGHT	100 Kg
STANDARD POWER SUPPLY	380-415V 3N
FREQUENCY	50-60 Hz
ELECTRICAL POWER	10,000 kW
IP GRADE	IPX4
CERTIFIED MODEL	D92/10MAE

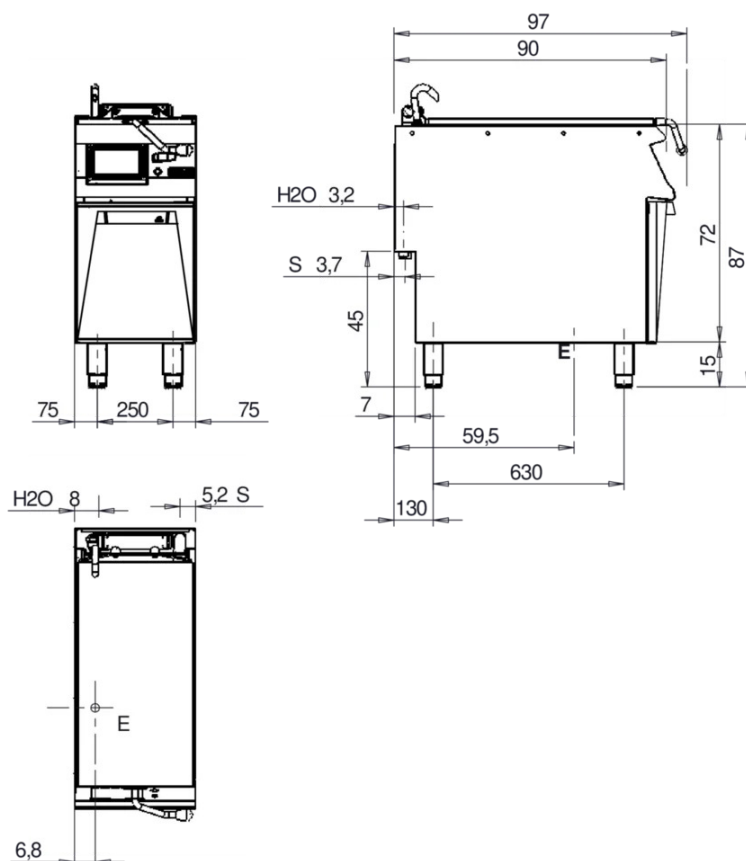
# MULTIFUNCTION FIT PAN CLASSIC GN1/1

CODICE  
CR1356529

MODELLO  
D92/10MAE

SERIE  
DIAMANTE 90

MISURE IN cm - DIMENSIONS IN cm - ABMESSUNGEN IN cm- MESURES EN cm  
MEDIDAS EN cm - MATEN IN cm - DIMENSIONES EN cm



Legenda - Legende - Key - Légende - Leyenda - Legenda - Legenda	
<b>E</b> Pressacavo entrata linea elettrica - Stopfbuchse - Electric cable stress relief - Presse étoupe de câble él - Pisacable - Elektrische kabelwartel - Entrada cabo eléctrico	<b>G</b> Arrivo gas - Gasanschluss - Gas connection - Arrivée gaz - Union de gas - Gasaansluiting - Ligação gás
<b>S</b> Attacco scarico acqua - Wasserablauf - Water outlet - Vidange de l'eau - Desaguadero - Wateraftapaansluiting - Junção descarga água <b>UNI EN 10226-1 R 1"</b>	<b>H20</b> Arrivo acqua - Wasseranschluss - Water inlet - Arrivée eau - Union de agua - Wateraansluiting - Junção alimentação água
<b>S1</b> Scarico vasca - Wannenabflussrohr - Pan outlet - Vidange du bac - Descarga cuba - Water toevoer - Descarga da cuba	<b>A1 =</b> Calda - Heiss - Warm - Chaud - Caliente - Warm - Morno <b>A2 =</b> Fredda - Kalt - Cold - Froid - Fria - Koude - Frio <b>EN ISO 228-1 G3/4</b>
<b>S2</b> Valvola di depressione - Anti-depression valve - Unterdruck ventil - Soupape de dépression - Válvula de depresión - Onderdrukklep - Válvula de depressão	<b>L</b> Rubinetto di livello - Level tap - Wasserhahn - Robinet de niveau - Grifo de nivel - Niveaakraan - Torneira de nível
<b>S3</b> Scarico acqua intercapedine - Wasserablauf Zwischenraum - Jacket water drain Evacuation eau double envelope - Descarga de agua intersticios - Afvoer water tussenruimte - Descarga de água na marmitta com Sistema de aquecimento indirecto	
<b>S4</b> Scarico - Abflussrohr - Drain - Tuyau d'évacuation - Tubo de drenaje - Aftapbuis - Tubulação de dreno	

## MULTIFUNCTION FIT PAN CLASSIC GN1/1

CODICE  
CR1356529

MODELLO  
D92/10MAE

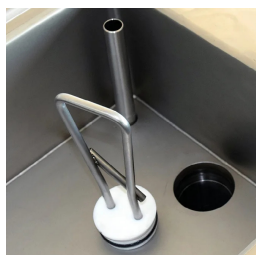
SERIE  
DIAMANTE 90



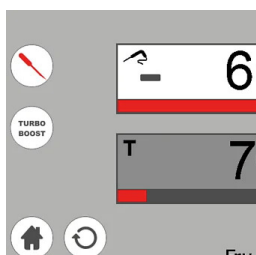
Automatic water filling with the possibility of programming litres.



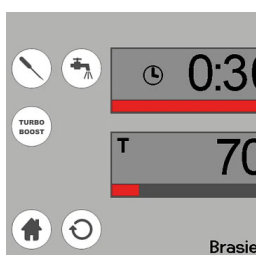
Basin for draining the cooked product into the tank. Guaranteed cleanliness of the station and easy transport of products.



Mains water drain with overflow drain and basin drain hole with sealing plug.



Control of cooking by core probe.



Easy to understand and use Touch Screen control panel. Possibility of storing personal recipes.

## MULTIFUNCTION FIT PAN CLASSIC GN1/1

CODICE  
CR1356529

MODELLO  
D92/10MAE

SERIE  
DIAMANTE 90

### ACCESSORIES

CODE	MODELLO	DESCRIZIONE
CR1200179	CAMCF	Lid for steamer use
CR1200169	GFMCF	Tank bottom grid
CR1200159	CPC1/3MCF	GN1/3 basket for pasta cooker
CR1200119	TSCMCF	Frame for slow cooking
CR0956330	SDXP	Shovel
CR0999069	CRLMCF	Trolley for multifunctional
CR1200149	CV1/3MCP	GN1/3 steamer basket 160x280x115(H)cm
CR0592819	ZF16	
CR0592719	ZF20	