

ELECTRIC PASTA COOKER 1 BOWL 40 L

CODICE
BN12101950

MODELLO
1100/45CPE

SERIE
SERIE 1100



GENERAL CHARACTERISTICS

A complete range that stands out for its exceptional versatility and the perfect combination of modules, thanks to the use of laser cutting technology.

The 1100 Series makes it possible to create different combinations and to equip the base units with a variety of solutions: central cooking blocks on bases, on bridges and even suspended; free-standing and therefore more functional pasta cookers and fryers. All in a structure that is both sturdy and design at the same time.

AISI 304 stainless steel, Scotch Brite finish, laser-cut 2 mm thick worktops

Wide choice of burners with different power ranges (3.5Kw, 5.6 Kw, 7 Kw, 10Kw)

Burners with stabilised flame, nickel-plated cast iron

Virtually unlimited possibility of power combinations (in compliance with maximum approvals)

Tested components and high efficiency of the heating elements used

Counter tops can be equipped with pass-through ovens, hot cabinets, ventilated, neutral, cantilever and bridge ovens

Also available with plinth

TECHNICAL SPECIFICATIONS

ELECTRIC PASTA COOKER 1 BOWL 40 L

CODICE
BN12101950

MODELLO
1100/45CPE

SERIE
SERIE 1100

Technical Information

SPECIFICATION	DATA
MATERIAL	BN12101950
DEFINITION	1100/45CPE CUOCIPASTA ELETTRICO 42L
COMMERCIAL LINE	SERIE 1100
SUPPLY	ELECTRICS
DIM. WIDTH	450 mm
DIM. PRODUCTIVITY	1100 mm
DIM. HEIGHT	870 mm
NET WEIGHT	38 Kg
VOLUME (net)	0,431
PACKAGE LENGTH	510 mm
PACKAGE WIDTH	1280 mm
PACKAGING HEIGHT	1150 mm
PACKAGE VOLUME	0,750 m3
GROSS PACKING WEIGHT	60 Kg
STANDARD POWER SUPPLY	380-415V 3N
FREQUENCY	50-60 Hz
ELECTRICAL POWER	8,500 kW
TENSION	400
IP GRADE	IPX5
CERTIFIED MODEL	1100/45CPE

ELECTRIC PASTA COOKER 1 BOWL 40 L

CODICE
BN12101950

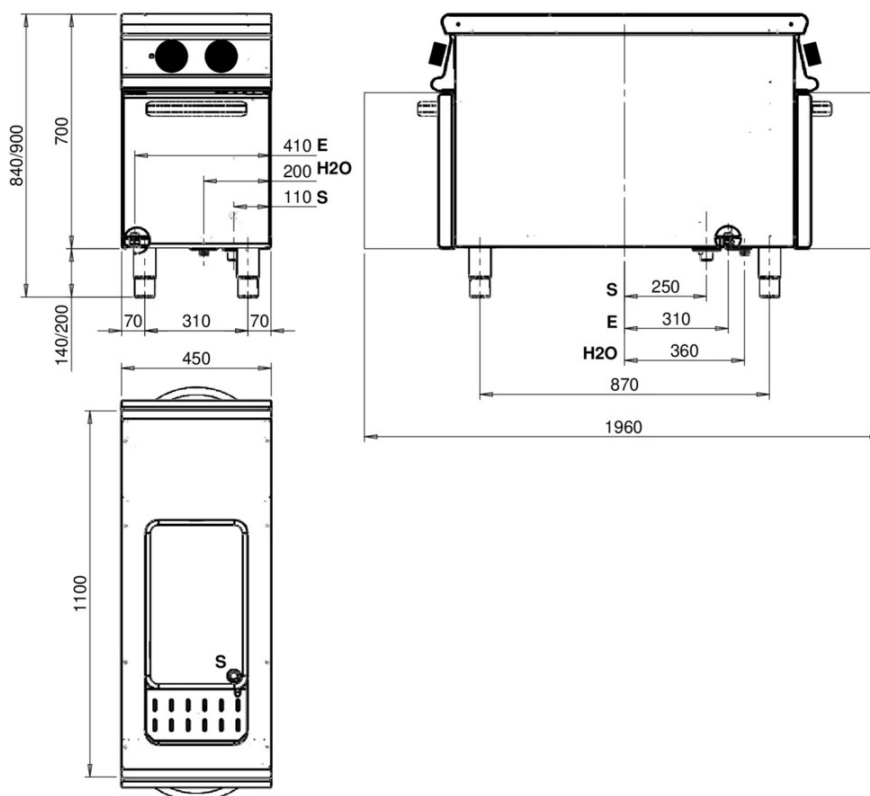
MODELLO
1100/45CPE

SERIE
SERIE 1100

SCHEMA DI INSTALLAZIONE - INSTALLATION DIAGRAM - INSTALLATIONSPLAN - SCHÉMA D'INSTALLATION - ESQUEMA DE INSTALACION - INSTALLATIESCHEMA - IINSTALLATIONSRIJNINGAR

MISURE IN mm - DIMENSIONS IN mm - ABMESSUNGEN IN mm - MESURES EN mm
MEDIDAS EN mm - MATEN IN mm - DIMENSIONES EN mm

NPC114E	EDEP2142
1100/45CPE	N1100CP/E450



Legenda - Legende - Key - Légende - Leyenda - Legenda - Legenda			
E	Pressacavo entrata linea elettrica - Stopfbuchse - Electric cable stress relief - Presse étoupe de câble él - Pisacable - Elektrische kabelwartel - Entrada cabo eléctrico	G	Arrivo gas - Gasanschluss - Gas connection - Arrivée gaz - Union de gas - Gasaansluiting - Ligação gás
S	Attacco scarico acqua - Wasserablauf - Water outlet - Vidange de l'eau - Desaguadero - Wateraftapaansluiting - Junção descarga água	H20	Arrivo acqua - Wasseranschluss - Water inlet - Arrivée eau - Union de água - Wateraansluiting - Junção alimentação água EN ISO 228-1 G 3/4
S1	Scarico vasca - Wannenabflussrohr - Pan outlet - Vidange du bac - Descarga cuba - Water toevoer - Descarga da cuba	A1 =	Calda - Heiss - Warm - Chaude - Caliente - Warm - Morno
S2	Valvola di depressione - Anti-depression valve - Unterdruck ventil - Soupape de dépression - Válvula de depresión - Onderdrukklep - Válvula de depressão	A2 =	Fredda - Kalt - Cold - Froid - Fria - Koude - Frio
S3	Scarico acqua intercapedine - Wasserablauf Zwischenraum - Jacket water drain Evacuation eau double envelope - Descarga de agua intersticios - Afvoer water tussenruimte - Descarga de água na marmitta com Sistema de aquecimento indirecto	L	Rubinetto di livello - Level tap - Wasserhahn - Robinet de niveau - Grifo de nivel - Niveaakraan - Torneira de nível

ELECTRIC PASTA COOKER 1 BOWL 40 L

CODICE
BN12101950

MODELLO
1100/45CPE

SERIE
SERIE 1100

ACCESSORIES

CODE	MODELLO	DESCRIZIONE
CR0999179	9KIT-A	40 LITRE TUB BASKET KIT
CR0999189	9KIT-B	40 LITRE TUB BASKET KIT
CR0999199	9KIT-C	40 LITRE TUB BASKET KIT
CR0789930	9KIT-D	40 LITRE TUB BASKET KIT
CR0999169	CVCP40	40 LITRE TANK LID
CR0999089	CCP13L	BASKET GN1/3 SIDE HANDLE
CR0999099	CCP13F	BASKET GN1/3 FRONT HANDLE
CR0999109	CCP16D	BASKET GN1/6 RIGHT-HAND HANDLE
CR0999119	CCP16S	BASKET GN1/6 LEFT HANDLE
CR0999129	CCP19	BASKET GN1/9 FRONT HANDLE