

# GAS PASTA COOKER 1 BASIN 40 LT MANUAL

CODICE  
CR0993419

MODELLO  
D92/10CPGM

SERIE  
DIAMANTE 90



## GENERAL CHARACTERISTICS

In addition to offering the maximum choice of solutions and 2 mm thick and 90 cm deep tops, this series has all the power, robustness and functionality you need to work efficiently. External coatings and feet in stainless steel with Scotch Brite finish. Working table height adjustable from 840 to 900 mm. Range modularity: 200-400-600-800-1200 Wide range of accessories.

## TECHNICAL SPECIFICATIONS

■ Moulded tubs with rounded corners, made of AISI 316 stainless steel for maximum corrosion resistance. ■ Water filling available by means of solenoid valve with the possibility of fast or slow loading or by means of a mechanical tap located on the control panel. Stainless steel water outlet integrated in the expansion zone, and floor drain. ■ Safety pressure switch to prevent activation of heating without water in the tank. ■ Gas version: Heating via stainless steel burner positioned outside the tank. ■ Safety gas valve with thermocouple and electric ignition. ■ Electric version: Heating by means of an AISI 304 steel armoured heating element located in the tank and rotatable by 90° for easy cleaning.

■ Safety pressure switch to prevent activation of heating without water in the tank. ■ Water dispenser located at the front of the tank. ■ Large expansion zone with overflow drain for draining excess starch during cooking. ■ Fully mechanical gas versions without the need for electrical connections. Water filling can be activated via a tap located on the control panel. ■ Thanks to the jet-proofing certification (IPX5) obtained through specific tests, knobs and under-knobs can be washed, without compromising functionality and safety.

# GAS PASTA COOKER 1 BASIN 40 LT MANUAL

CODICE  
CR0993419

MODELLO  
D92/10CPGM

SERIE  
DIAMANTE 90

## Technical Information

SPECIFICATION	DATA
MATERIAL	CR0993419
DEFINITION	D92/10 CPGM CUOCIPAS.FULL GAS M40 40L
COMMERCIAL LINE	DIAMANTE
SUPPLY	GAS
NET WEIGHT	58.4 Kg
PACKAGE LENGTH	460 mm
PACKAGE WIDTH	1020 mm
PACKAGING HEIGHT	1150 mm
PACKAGE VOLUME	0,540 m3
GROSS PACKING WEIGHT	69 Kg
GAS POWER	14,00
GAS POWER (G25.3/25mbar)	13,00
CERTIFIED MODEL	D92/10 CPGM

# GAS PASTA COOKER 1 BASIN 40 LT MANUAL



weinnovate cooking

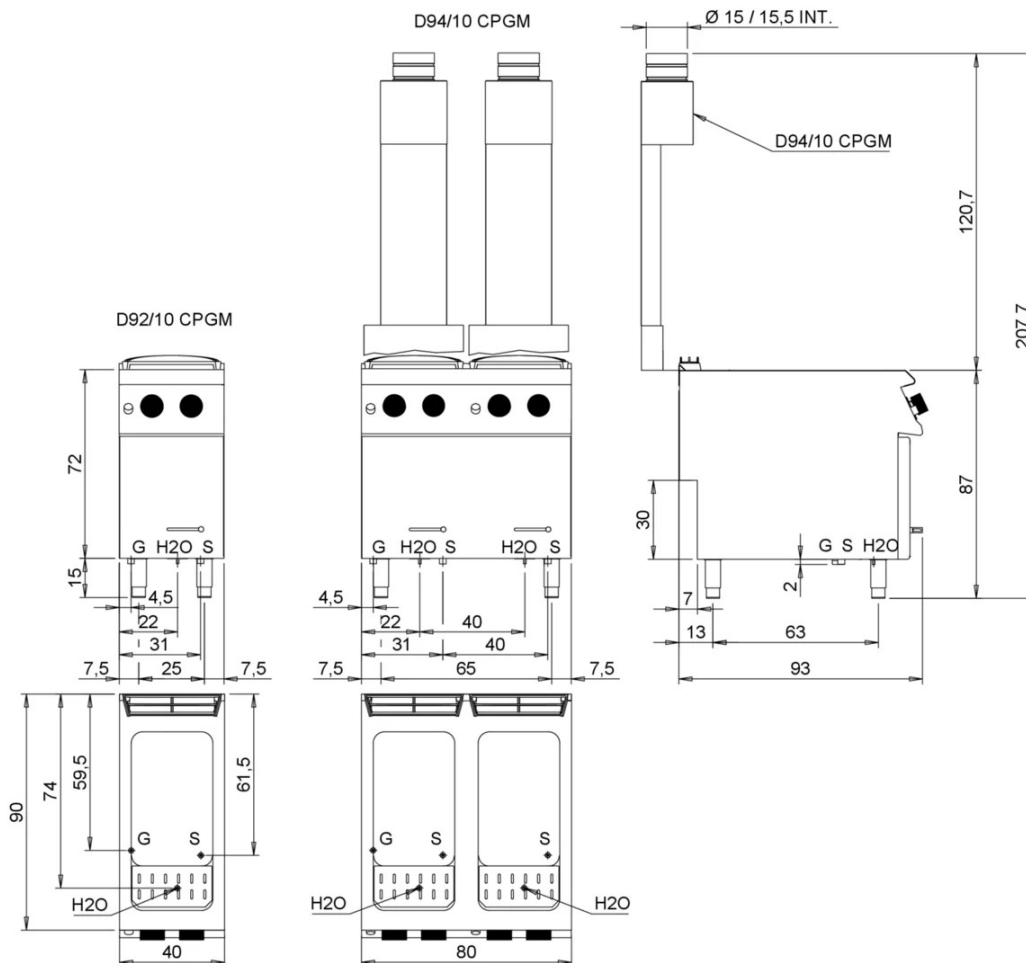
CODICE  
CR0993419

MODELLO  
D92/10CPGM

SERIE  
DIAMANTE 90

## SCHEMA DI INSTALLAZIONE - INSTALLATION DIAGRAM - INSTALLATIONSPLAN - SCHÉMA D'INSTALLATION - ESQUEMA DE INSTALACION - INSTALLATIESCHEMA - IINSTALLATIONSRTNINGAR

MISURE IN cm - DIMENSIONS IN cm - ABMESSUNGEN IN cm - MESURES EN cm  
MEDIDAS EN cm - MATEN IN cm - DIMENSIONES EN cm



### Legenda - Legende - Key - Légende - Leyenda - Legenda - Legenda

<b>E</b>	Pressacavo entrata linea elettrica - Stopfbuchse - Electric cable stress relief - Presse étoupe de câble él - Pisacable - Elektrische kabelwartel - Entrada cabo eléctrico	<b>G</b>	Arrivo gas - Gasanschluss - Gas connection - Arrivée gaz - Union de gas - Gasaansluiting - Ligaçao gás EN 10226-1 R 1/2; EN ISO 228-1 G 1/2 (DK)
<b>S</b>	Attacco scarico acqua - Wasserablauf - Water outlet - Vidange de l'eau - Desaguadero - Wateraftapaansluiting - Junção descarga água EN 10226-1 R1	<b>H2O</b>	Arrivo acqua - Wasseranschluss - Water inlet - Arrivée eau - Union de agua - Wateraansluiting - Junção alimentação água
<b>S1</b>	Scarico vasca - Wannenabflussrohr - Pan outlet - Vidange du bac - Descarga cuba - Water toevoer - Descarga da cuba	<b>A1</b>	Calda - Heiss - Warm - Chaude - Caliente - Warm - Morno
<b>S2</b>	Valvola di depressione - Anti-depression valve - Unterdruck ventil - Soupape de dépression - Válvula de depresión - Onderdrukklep - Válvula de depressão	<b>A2</b>	Fredda - Kalt - Cold - Froid - Fria - Koude - Frio Ø=1 cm
<b>S3</b>	Scarico acqua intercapedine - Wasserablauf Zwischenraum - Jacket water drain Evacuation eau double envelope - Descarga de agua intersticios - Afvoer water tussenruimte - Descarga de água na marmitta com Sistema de aquecimento indirecto	<b>L</b>	Rubinetto di livello - Level tap - Wasserhahn - Robinet de niveau - Grifo de nivel - Niveaakraan - Torneira de nível

# GAS PASTA COOKER 1 BASIN 40 LT MANUAL

CODICE  
CR0993419

MODELLO  
D92/10CPGM

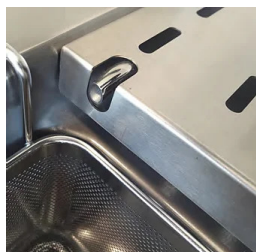
SERIE  
DIAMANTE 90



Safety pressure switch to prevent activation of heating without water in the tank.



Thanks to the jet-proofing certification (IPX5) obtained through specific tests, knobs and under-knobs can be washed, without compromising functionality and safety.



Water dispenser located at the front of the tank.



Large expansion zone with overflow drain for draining excess starch during cooking.



Fully mechanical gas versions without the need for electrical connections. Water filling can be activated via a tap located on the control panel.

# GAS PASTA COOKER 1 BASIN 40 LT MANUAL

CODICE  
CR0993419

MODELLO  
D92/10CPGM

SERIE  
DIAMANTE 90

## ACCESSORIES

CODE	MODELLO	DESCRIZIONE
CR0999149	GFCP40	40Lt BOTTOM TANK GRID
CR0999179	9KIT-A	40 LITRE TUB BASKET KIT
CR0999189	9KIT-B	40 LITRE TUB BASKET KIT
CR0999199	9KIT-C	40 LITRE TUB BASKET KIT
CR0789930	9KIT-D	40 LITRE TUB BASKET KIT
CR0999219	9KIT - E	KIT 2 GN1/2 STAINLESS STEEL BASKETS WITH SIDE HANDLES
CR0592779	ZF4	Front plinth - FOR INSTALLING EQUIPMENT WITH FLOOR HEIGHT 90 CM L=40
CR0592830	ZG	SKIRTING JOINT
CR0592820	9ZL	Side plinth
MA97432000	R	WHEEL KIT (2 + 2) Ø 100
MA97433000	RI	WHEEL KIT (2 + 2) Ø 101 STAINLESS STEEL
CR0592869	PZM	NO. 4 STAINLESS STEEL FEET FOR INSTALLATION ON CONCRETE PLINTH
CR0593580	9PT	No. 4 stainless steel feet for installation on tops
CR0592879	KPA	N.2 STAINLESS STEEL FEET WITH FLANGE
CR0999109	CCP16D	BASKET GN1/6 RIGHT-HAND HANDLE
CR0999079	CCP12	BASKET GN1/2 SIDE HANDLE
CR0999089	CCP13L	BASKET GN1/3 SIDE HANDLE
CR0999099	CCP13F	BASKET GN1/3 FRONT HANDLE
CR0999119	CCP16S	BASKET GN1/6 LEFT HANDLE
CR0999129	CCP19	BASKET GN1/9 FRONT HANDLE
CR0999169	CVCP40	40 LITRE TANK LID