

ELECTRIC FRY TOP 2/3 SMOOTH 1/3 RIBBED CHROME PLATE ON CABINET

CODICE
CR0996619

MODELLO
D96/10FTEC1/3R

SERIE
DIAMANTE 90



GENERAL CHARACTERISTICS

In addition to offering the maximum choice of solutions and 2 mm thick and 90 cm deep tops, this series has all the power, robustness and functionality you need to work efficiently. External coatings and feet in stainless steel with Scotch Brite finish. Working table height adjustable from 840 to 900 mm. Range modularity: 200-400-600-800-1200 Wide range of accessories.

TECHNICAL SPECIFICATIONS

■ A 10-mm inclination of the plates towards the front of the machine allows optimal grease outflow to the grease tray. ■ Plate welded to the hob that provides a larger cooking zone and eliminates dirt accumulation areas. ■ Plate with armoured incoloy

heating elements placed under the bottom for cooking with temperature uniformity. ■ Equipment certified for low voltage directive 2014/35/EU according to the international CB scheme. ■ Thanks to the jet-proofing certification (IPX5) obtained through specific tests, knobs and under-knobs can be washed, without compromising functionality and safety.

ELECTRIC FRY TOP 2/3 SMOOTH 1/3 RIBBED CHROME PLATE ON CABINET

CODICE
CR0996619

MODELLO
D96/10FTEC1/3R

SERIE
DIAMANTE 90

Technical Information

SPECIFICATION	DATA
MATERIAL	CR0996619
DEFINITION	D96/10 FTEC1/3R FRY TOP E.1/3RC M120 V.G
COMMERCIAL LINE	DIAMANTE
SUPPLY	ELECTRICS
DIM. WIDTH	1200 mm
DIM. PRODUCTIVITY	900 mm
DIM. HEIGHT	870 mm
NET WEIGHT	182 Kg
VOLUME (net)	0,940
PACKAGE LENGTH	1260 mm
PACKAGE WIDTH	1020 mm
PACKAGING HEIGHT	1150 mm
PACKAGE VOLUME	1,478 m3
GROSS PACKING WEIGHT	210 Kg
STANDARD POWER SUPPLY	380-415V 3N
FREQUENCY	50-60 Hz
ELECTRICAL POWER	22,500 kW
IP GRADE	IPX5
CERTIFIED MODEL	D96/10 FTEC1/3R

ELECTRIC FRY TOP 2/3 SMOOTH 1/3 RIBBED CHROME PLATE ON CABINET

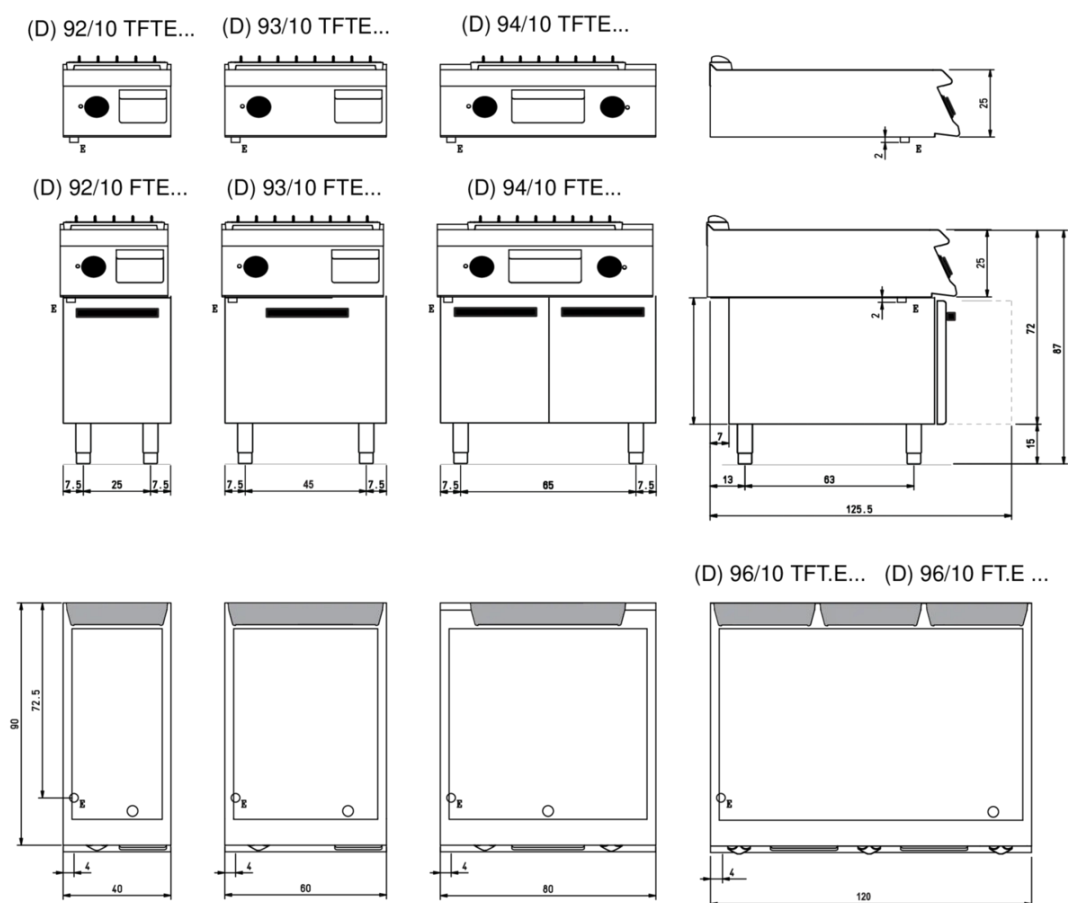
CODICE
CR0996619

MODELLO
D96/10FTEC1/3R

SERIE
DIAMANTE 90

SCHEMA DI INSTALLAZIONE - INSTALLATION DIAGRAM - INSTALLATIONSPLAN - SCHÉMA D'INSTALLATION - ESQUEMA DE INSTALACION -INSTALLATIESCHEMA - IINSTALLATIONSRTNINGAR

MISURE IN cm - DIMENSIONS IN cm - ABMESSUNGEN IN cm
MESURES EN cm - MEDIDAS EN cm - MATEN IN cm



Legenda - Legende - Key - Légende - Leyenda - Legenda

E Pressacavo entrata linea elettrica - Stopfbuchse - Electric cable stress relief
Presse étoupe de câble él. - Pisacable - Elektrische kabelwartel

ELECTRIC FRY TOP 2/3 SMOOTH 1/3 RIBBED CHROME PLATE ON CABINET

CODICE
CR0996619

MODELLO
D96/10FTEC1/3R

SERIE
DIAMANTE 90



A 10-mm inclination of the plates towards the front of the machine allows optimal grease outflow to the grease tray.



Thanks to the jet-proofing certification (IPX5) obtained through specific tests, knobs and under-knobs can be washed, without compromising functionality and safety.

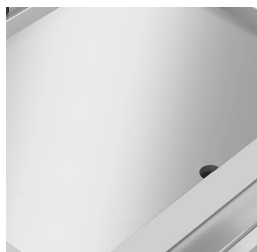
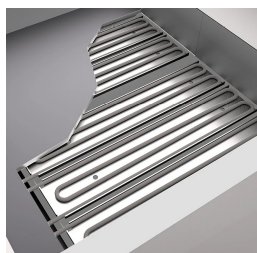


Plate welded to the hob that provides a larger cooking zone and eliminates dirt accumulation areas.



Predisposition for core probe, for even greater cooking control. Reaching the set core temperature is signalled by an acoustic signal



Equipment certified for low voltage directive 2014/35/EU according to the international CB scheme.

ELECTRIC FRY TOP 2/3 SMOOTH 1/3 RIBBED CHROME PLATE ON CABINET

CODICE
CR0996619

MODELLO
D96/10FTEC1/3R

SERIE
DIAMANTE 90

ACCESSORIES

CODE	MODELLO	DESCRIZIONE
CR0957610	90XFTP12	SPLASH GUARD FOR FRY TOP MODULE 120
CR0592089	NXFTC6/8	Fry top cleaning drawer M40-M60-M80-M120
CR0592079	NXFTC4	Fry top cleaning drawer M40-M120
CR0592060	NXFTT	PLANCHA CLEANING PLUG
CR1354989	PRPC	Smooth plate cleaning scraper - chrome-plated
CR1354999	PKLR	Replacement blades (10PCS)
CR1356399	RPR	Striped chrome plate scraper
CR0996979	DBVP4	Diamond door 39.5x3.6x46.5 cm for 40 cm compartments
CR0997009	DBVPA4	Accessory Diamond door 39.5x3.6x46.5 cm for 40 cm compartments
CR0997029	DAPC	Accessories for accessory diamond knife holder
CR0997019	DAPD	Accessories for Diamond door accessories
CR0997039	DAPS	Accessories for diamond spice rack
CR0997049	DAPM	Accessories for accessory Diamond door
CR0997059	DAPDB	Accessories for accessory Diamond door/bottle holders
CR1353589	DBVC4	Drawer kit 39.5x56x46.5 cm for compartments of 40