

## ELECTRIC COOKER WITH 2 SQUARE TOP PLATES

CODICE  
CR0995619

MODELLO  
D92/10TCEPQ

SERIE  
DIAMANTE 90



### GENERAL CHARACTERISTICS

In addition to offering the maximum choice of solutions and 2 mm thick and 90 cm deep tops, this series has all the power, robustness and functionality you need to work efficiently. External coatings and feet in stainless steel with Scotch Brite finish. Working table height adjustable from 840 to 900 mm. Range modularity: 200-400-600-800-1200 Wide range of accessories.

### TECHNICAL SPECIFICATIONS

■ Square 300x300 mm cast iron heating plates, maximum power 4 kW, equipped with safety thermostat. ■ Heating control with 7-position selector switch.

■ Square plates of 30x30 each, fixed watertight on the worktop. ■ The temperature is adjusted by means of a 7-position selector

switch, and a warning light indicating the activation of the heating is located on the dashboard. ■ Equipment certified for low voltage directive 2014/35/EU according to the international CB scheme. ■ Thanks to the jet-proofing certification (IPX5) obtained through specific tests, knobs and under-knobs can be washed, without compromising functionality and safety.

## ELECTRIC COOKER WITH 2 SQUARE TOP PLATES

CODICE  
CR0995619

MODELLO  
D92/10TCEPQ

SERIE  
DIAMANTE 90

### Technical Information

SPECIFICATION	DATA
MATERIAL	CR0995619
DEFINITION	D92/10 TCEPQ 2 PIASTRE QUADRE TOP
COMMERCIAL LINE	DIAMANTE
SUPPLY	ELECTRICS
DIM. WIDTH	400 mm
DIM. PRODUCTIVITY	900 mm
DIM. HEIGHT	250 mm
NET WEIGHT	36 Kg
VOLUME (net)	0.09
PACKAGE LENGTH	460 mm
PACKAGE WIDTH	1020 mm
PACKAGING HEIGHT	670 mm
PACKAGE VOLUME	0,314 m3
GROSS PACKING WEIGHT	46.6 Kg
STANDARD POWER SUPPLY	380-415V 3N
FREQUENCY	50-60 Hz
ELECTRICAL POWER	8,000 kW
N. FIRES/PLATES	QUATTRO FUOCHI
TENSION	400
IP GRADE	IPX5
CERTIFIED MODEL	D92/10 TCEPQ

# ELECTRIC COOKER WITH 2 SQUARE TOP PLATES

CODICE  
CR0995619

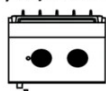
MODELLO  
D92/10TCEPQ

SERIE  
DIAMANTE 90

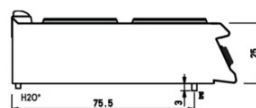
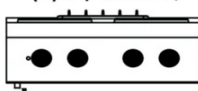
## SCHEMA DI INSTALLAZIONE - INSTALLATION DIAGRAM - INSTALLATIONSPLAN - SCHÉMA D'INSTALLATION - ESQUEMA DE INSTALACION - INSTALLATIESCHEMA - IINSTALLATIONSRIJNINGAR

MISURE IN cm - DIMENSIONS IN cm - ABMESSUNGEN IN cm  
MESURES EN cm - MEDIDAS EN cm - MATEN IN cm

(D) 92/10TCEPQ



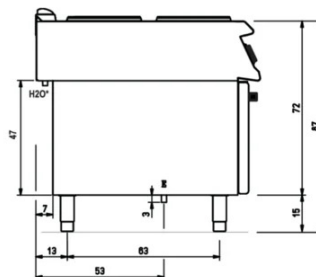
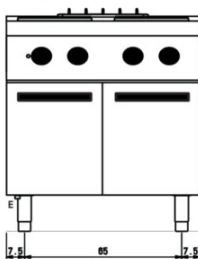
(D) 94/10TCEPQ



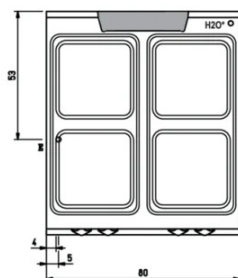
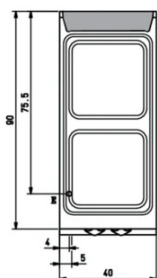
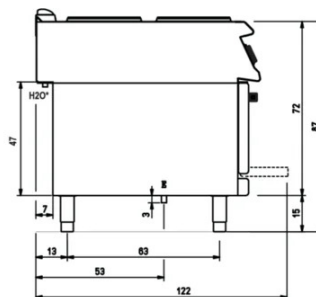
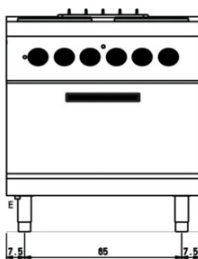
(D) 92/10CEPQ



(D) 94/10CEPQ



(D) 94/10CEEPQ



Legenda - Legende - Key - Légende - Leyenda - Legenda

**E** Pressacavo entrata linea elettrica - Stopfbuchse  
Electric cable stress relief - Presse étoupe de câble él  
Pisacable - Elektrische kabelwartel

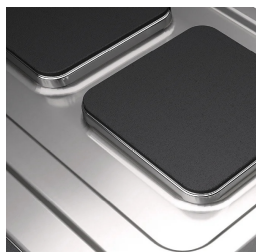
**H20\*** Attacco arrivo acqua - Wasseranschluss - Water inlet  
Arrivée eau - Union de agua - Wateraansluiting  
**EN ISO 228-1 G 3/4**

## ELECTRIC COOKER WITH 2 SQUARE TOP PLATES

CODICE  
CR0995619

MODELLO  
D92/10TCEPQ

SERIE  
DIAMANTE 90



Square plates of 30x30 each, fixed watertight on the worktop.



The temperature is adjusted by means of a 7-position selector switch, and a warning light indicating the activation of the heating is located on the dashboard.



Equipment certified for low voltage directive 2014/35/EU according to the international CB scheme.



Thanks to the jet-proofing certification (IPX5) obtained through specific tests, knobs and under-knobs can be washed, without compromising functionality and safety.

## ELECTRIC COOKER WITH 2 SQUARE TOP PLATES

CODICE  
CR0995619

MODELLO  
D92/10TCEPQ

SERIE  
DIAMANTE 90

### ACCESSORIES

CODE	MODELLO	DESCRIZIONE
CR1355449	D92/10B	Open base 40cm series 90
CR0996979	DBVP4	Diamond door 39.5x3.6x46.5 cm for 40 cm compartments
CR0997009	DBVPA4	Accessory Diamond door 39.5x3.6x46.5 cm for 40 cm compartments
CR0997029	DAPC	Accessories for accessory diamond knife holder
CR0997019	DAPD	Accessories for Diamond door accessories
CR0997039	DAPS	Accessories for diamond spice rack
CR0997049	DAPM	Accessories for accessory Diamond door
CR0997059	DAPDB	Accessories for accessory Diamond door/bottle holders
CR1353589	DBVC4	Drawer kit 39.5x56x46.5 cm for compartments of 40