

## WOK INDUCTION - 5kw TOP version

CODICE  
CR1359239T

MODELLO  
DT92/10TCIIV

SERIE  
DIAMANTE 90 TOUCH



### GENERAL CHARACTERISTICS

Diamond 90 Touch - Everything under control Everything is under control, perfect results every time. Thanks to the practical display, parameter selection is quick and precise. Easy and clear temperature management, and special functions are always visible and accessible from the display. Tradition and innovation, everything on your worktop A new non-slip square and rounded knob design for a more ergonomic grip and an embossed indicator that makes it easier to select the datum to be set. And with the exclusive Encoder Functionality, simply touch the parameter you want, turn the knob to adjust the level and press it to start the set datum. With water- and dirt-proof crown. Quick and precise parameter selection. Easy and clear temperature management. Special functions always visible and accessible from the display. Stainless steel outer shells and feet. Height from the work surface adjustable from 840 to 900mm. Tops with 2 mm thickness

### TECHNICAL SPECIFICATIONS

■ Unbreakable glass-ceramic top. ■ Serigraphs identifying cooking zones. ■ Safety sensor to prevent overheating. ■ Power adjustable to 12 levels Heating by means of an inductor equipped with a device that detects the presence of the cooking vessel on the cooking zone and automatically activates/deactivates heating.

■ Possibility of setting 2 timers to control cooking. An acoustic signal warns the operator at the end of the set time. ■ Power level control via touch screen and adjustment with ergonomic knob ■ High

power, full-field capability. automatic detection of the presence of pans. ■ Everything is under control, perfect results every time. Thanks to the practical display, parameter selection is quick and precise. Easy and clear temperature management, and special functions are always visible and accessible from the display. ■ Thanks to the jet-proofing certification (IPX5) obtained through specific tests, knobs and under-knobs can be washed, without compromising functionality and safety.

## WOK INDUCTION - 5kw TOP version

CODICE  
CR1359239T

MODELLO  
DT92/10TCIIW

SERIE  
DIAMANTE 90 TOUCH

### Technical Information

| SPECIFICATION         | DATA                               |
|-----------------------|------------------------------------|
| MATERIAL              | CR1359239T                         |
| DEFINITION            | DT92/10 TCIW WOK M40 ELETTRON. TOP |
| COMMERCIAL LINE       | DIAMANTE                           |
| SUPPLY                | ELECTRICS                          |
| DIM. WIDTH            | 400 mm                             |
| DIM. PRODUCTIVITY     | 900 mm                             |
| DIM. HEIGHT           | 250 mm                             |
| NET WEIGHT            | 0 Kg                               |
| VOLUME (net)          | 0,090                              |
| PACKAGE LENGTH        | 0 mm                               |
| PACKAGE WIDTH         | 0 mm                               |
| PACKAGING HEIGHT      | 0 mm                               |
| PACKAGE VOLUME        | 0,000 m3                           |
| GROSS PACKING WEIGHT  | 0 Kg                               |
| STANDARD POWER SUPPLY | 400V 3                             |
| FREQUENCY             | 50 Hz                              |
| ELECTRICAL POWER      | 5,000 kW                           |
| IP GRADE              | IPX5                               |
| CERTIFIED MODEL       | D92/10 TCIW                        |

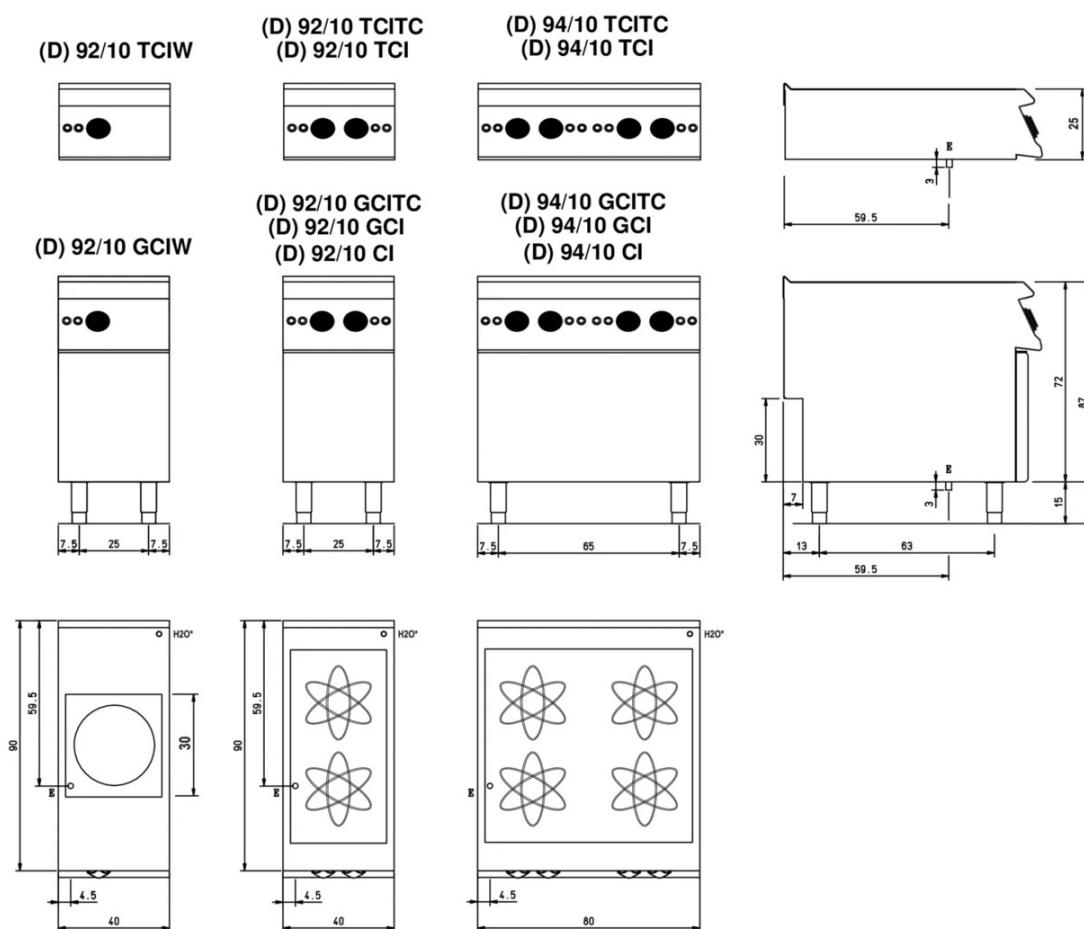
CODICE  
CR1359239T

MODELLO  
DT92/10TCIIW

SERIE  
DIAMANTE 90 TOUCH

## SCHEMA DI INSTALLAZIONE - INSTALLATION DIAGRAM - INSTALLATIONSPLAN - SCHÉMA D'INSTALLATION - ESQUEMA DE INSTALACION - INSTALLATIESCHEMA - IINSTALLATIONSRTNINGAR

MISURE IN cm - DIMENSIONS IN cm - ABMESSUNGEN IN cm  
MESURES EN cm - MEDIDAS EN cm - MATEN IN cm



Legenda - Legende - Key - Légende - Leyenda - Legend

**E** Pressacavo entrata linea elettrica - Stopfbuchse - Electric cable stress relief  
Presse étoupe de câble él. - Pisacable - Elektrische kabelwartel

**H2O\*** Attacco arrivo acqua - Wasseranschluss - Water inlet  
Arrivée eau - Union de agua - Wateraansluiting  
**EN ISO 228-1 G 3/4**

## WOK INDUCTION - 5kw TOP version

CODICE  
CR1359239T

MODELLO  
DT92/10TCIIW

SERIE  
DIAMANTE 90 TOUCH



Possibility of setting 2 timers to control cooking. An acoustic signal warns the operator at the end of the set time.



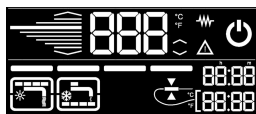
Thanks to the jet-proofing certification (IPX5) obtained through specific tests, knobs and under-knobs can be washed, without compromising functionality and safety.



Power level control via touch screen and adjustment with ergonomic knob



High power, full-field capability.  
automatic detection of the presence of pans.



Everything is under control, perfect results every time. Thanks to the practical display, parameter selection is quick and precise. Easy and clear temperature management, and special functions are always visible and accessible from the display.

## WOK INDUCTION - 5kw TOP version

CODICE  
CR1359239T

MODELLO  
DT92/10TCIIV

SERIE  
DIAMANTE 90 TOUCH

### ACCESSORIES

| CODE      | MODELLO | DESCRIZIONE  |
|-----------|---------|--|
| CR1357559 | OC-T4W  | WIFI connectivity retrofit kit                                 |
| CR1355449 | D92/10B | Open base 40cm series 90                                       |
| CR0996979 | DBVP4   | Diamond door 39.5x3.6x46.5 cm for 40 cm compartments           |
| CR0997009 | DBVPA4  | Accessory Diamond door 39.5x3.6x46.5 cm for 40 cm compartments |
| CR0997029 | DAPC    | Accessories for accessory diamond knife holder                 |
| CR0997019 | DAPD    | Accessories for Diamond door accessories                       |
| CR0997039 | DAPS    | Accessories for diamond spice rack                             |
| CR0997049 | DAPM    | Accessories for accessory Diamond door                         |
| CR0997059 | DAPDB   | Accessories for accessory Diamond door/bottle holders          |
| CR1353589 | DBVC4   | Drawer kit 39.5x56x46.5 cm for compartments of 40              |